



CHANTRY CLOSE, HA3  
**£850,000 FREEHOLD**

**3 BEDROOM EXTENDED GARAGE OWN DRIVE**

Kingsbury | 020 8204 0000 | [kingsbury@winkworth.co.uk](mailto:kingsbury@winkworth.co.uk)

**Winkworth**

for every step...

[winkworth.co.uk](http://winkworth.co.uk)





**DESCRIPTION:** Winkworth are delighted to offer for sale as sole agents this stylish, spacious and extremely well presented three bedroom semidetached house situated in Chantry Close, Kenton. Benefitting from a Garage own Drive, this recently refurbished property, boasts off street parking to the front for 2 cars. New Windows, Boiler, Radiators, Bathroom and Kitchen are some of the new features in this Neutrally Decorated property. Finished to an exceptionally high standard, there is a bright and ample reception area facility which leads through to an airy open plan kitchen benefiting from conveniently integrated German appliances, granite worktops as well as contemporary doors with integrated blinds and cosy pergola overlooking the stunning rear garden, just perfect for hosting family get togethers. Moving upstairs, this outstanding home is perfect for the growing family with two large double bedrooms complete with integrated wardrobes , a single bedroom and a modern family bathroom.



**Winkworth**

for every step...





Winkworth  
for every step...



Winkworth  
for every step...



Winkworth  
for every step...



Winkworth  
for every step...

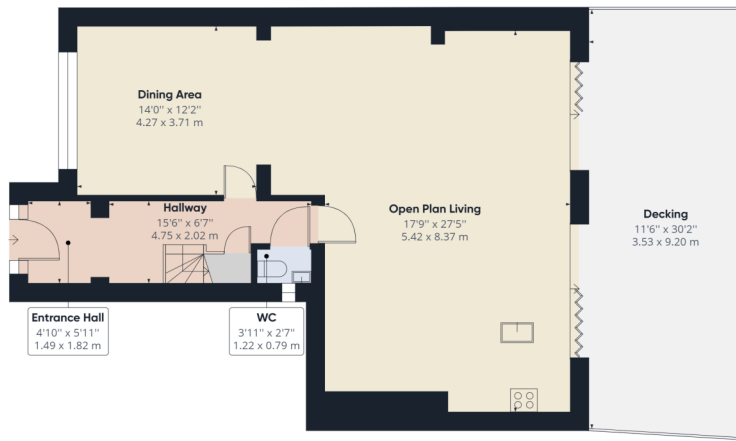


Winkworth  
for every step...

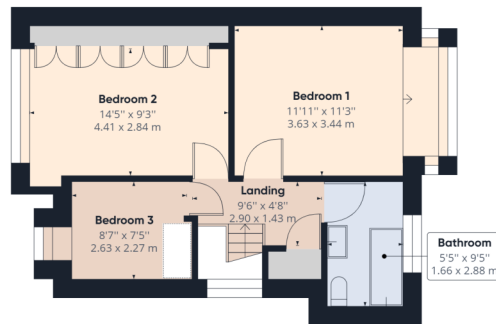


Winkworth  
for every step...

**Winkworth**  
for every step...



Ground Floor Building 1



Floor 1 Building 1

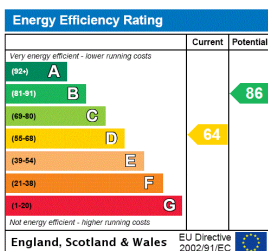
Approximate total area<sup>(1)</sup>  
1340.92 ft<sup>2</sup>  
124.58 m<sup>2</sup>

(1) Excluding balconies and terraces

While every attempt has been made to ensure accuracy, all measurements are approximate, not to scale. This floor plan is for illustrative purposes only.

GIRAFFE360

This floorplan is for illustration purposes only and is not to scale. The position and size of doors, windows, appliances and other features are approximate.



Kingsbury | 020 8204 0000 | kingsbury@winkworth.co.uk

**Winkworth**

for every step...

winkworth.co.uk

Winkworth wishes to inform prospective buyers and tenants that these particulars are a guide and act as information only. All our details are given in good faith and believed to be correct at the time of printing but they don't form part of an offer or contract. No Winkworth employee has authority to make or give any representation or warranty in relation to this property. All fixtures and fittings, whether fitted or not are deemed removable by the vendor unless stated otherwise and room sizes are measured between internal wall surfaces, including furnishings.