



London Road, Berkshire, RG14

£950 per month



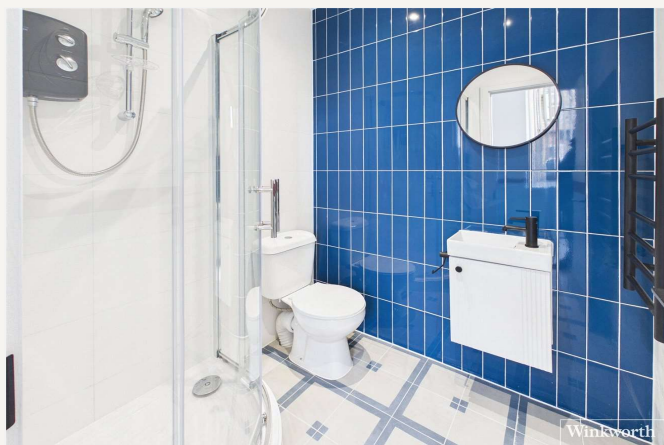
Brand new studio apartment within this refurbished development in Newbury town centre.

The studio offers a lounge/bedroom with fitted kitchen with integrated fridge/freezer, electric oven and hob and washer/dryer.

Parking can be available by separate negotiation.

Ultrafast broadband available with no known mobile coverage issues.

Available now, for a long term furnished or unfurnished let. No smokers, no pets.



Newbury

01635 552552 | newbury@winkworth.co.uk

Winkworth

for every step...

EPC C
West Berkshire Council Band B

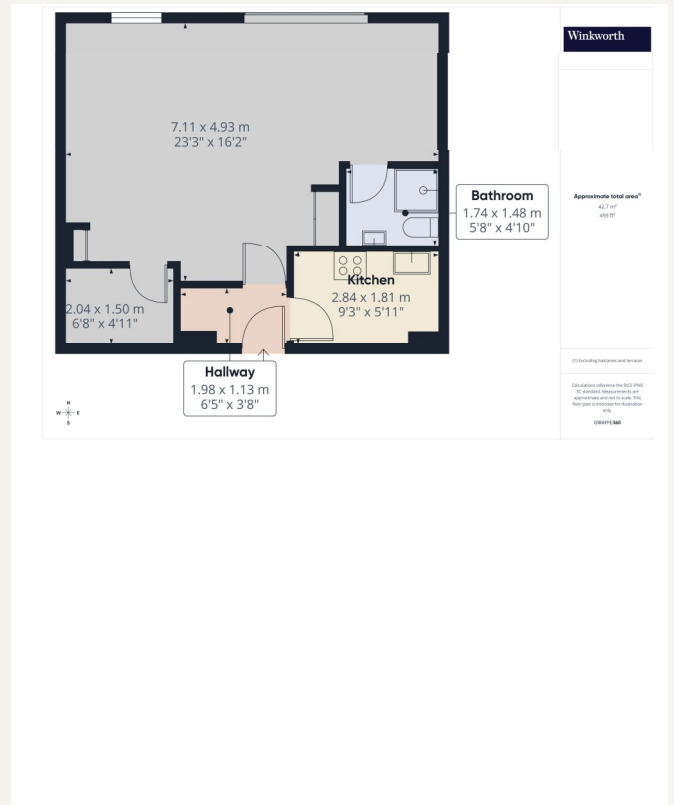
Tenants fees:

Security deposit, the equivalent of five weeks rent. (Sub annual rent of £50,000). Six weeks rent for rents above £50,000 pa).

Company lets are outside of the remit of Tenant Fee Ban Legislation 2019 and attract an admin fee of £480 inc VAT.

Holding deposit of one weeks rent, refundable on commencement of tenancy.

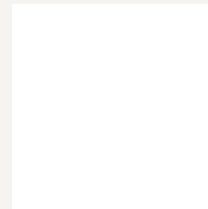
In the interests of transparency, a copy of our full tenant fee sheet will be sent to you by email on enquiry.



MATERIAL INFO

Deposit: 5 Weeks Rent
Holding Deposit: 1 Weeks Rent
Council Tax Band: B

For more information, scan the QR code or visit the link below



<https://www.winkworth.co.uk/rent/property/NEB260045>

Where no figures are shown, we have been unable to ascertain the information. All figures that are shown were correct at the time of printing.

Newbury

01635 552552 | newbury@winkworth.co.uk

Winkworth

for every step...

Winkworth wishes to inform prospective buyers and tenants that these particulars are a guide and act as information only. All our details are given in good faith and believed to be correct at the time of printing but they don't form part of an offer or contract. No Winkworth employee has authority to make or give any representation or warranty in relation to this property. All fixtures and fittings, whether fitted or not are deemed removable by the vendor unless stated otherwise and room sizes are measured between internal wall surfaces, including furnishings.