

Love Walk, London, SE5

£700,000 Leasehold

Winkworth are proud to present this beautifully finished new-build two-bedroom top floor apartment with a south-facing balcony, only a short walk from Camberwell Green and Denmark Hill Train Station. EPC Rating C.

LOCATION

Love Walk is a quiet street running between Denmark Hill and the ever-beautiful Grove Lane. Camberwell green is just a short walk away, and Denmark Hill Train Station is just an 8-minute walk away. There are an abundance of cafés, shops and restaurants surrounding the property.

DESCRIPTION

This 2nd floor flat comprises two very large bedrooms, two bathrooms, and an extremely spacious open plan kitchen/reception space leading out onto a spacious balcony.

The bedrooms are fantastic sizes and finished with luxurious Cormar Primo Moonshine carpet, with space for a king-sized beds and free-standing storage. One of the bedrooms also benefits from an en-suite bathroom. Between the two bedrooms is the family bathroom.

The bathroom are of a designer finish, with a Duravit contemporary WC with soft close seat and Geberit dual flush concealed cistern, Duravit wash basin and vanity drawer unit, Hansgrohe mixer tap, chrome towel rail, and mirror. The family bathroom contains a white bath with single bath screen and Vado shower, whilst the en-suite contains a large walk-in shower. Both bathrooms are finished in Mariner Seashell tiling.

The hallway and kitchen/reception room are finished with Fendi herringbone, prime, smoked, white UV oiled, Parquet flooring throughout.

The extremely spacious kitchen/reception room is complimented by triple-aspect windows letting ample light, with a large glass door looking out onto the balcony at one end. The kitchen itself is of a contemporary Italian design by Espresso Design with a comprehensive range of wall and base units and handle-less doors. There is an abundance of storage, as well as stone Italiana worktops, Bosch built-in oven, induction hob, fridge/freezer and dishwasher, and a single bowl stainless steel undermounted sink.

The reception space could easily accommodate a large dining table and chairs, as well as a sofa, coffee table and TV unit.

The balcony is a charming place to relax and catch some of the sun’s rays, as well as being the perfect alfresco spot.

The entire flat benefits from underfloor heating, as well as white low energy LED spotlights, BT fibre, Virgin media, video entry phone, and hardwired smoke/CO2 detectors. There is also DMEV (ventilation system) and Vaillant air source heat pump.

The building also benefits from secure bike storage at the front of the property, and the whole building is under a 10-year Buildzone warranty.

DIRECTIONS

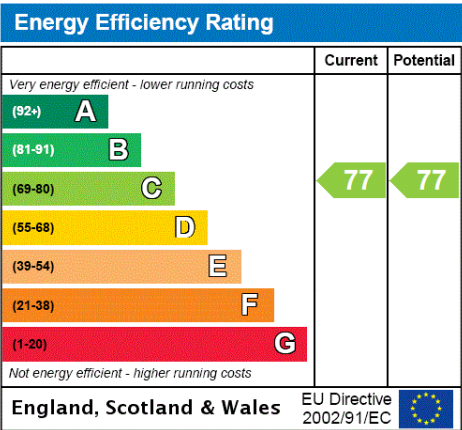
Love Walk runs between Denmark Hill and Grove Lane. Denmark Hill overground station is 0.4 miles away (8 min walk), and Camberwell Green is 0.3 miles away (7 min walk). The local area is also well served by a frequent bus service into Central London.

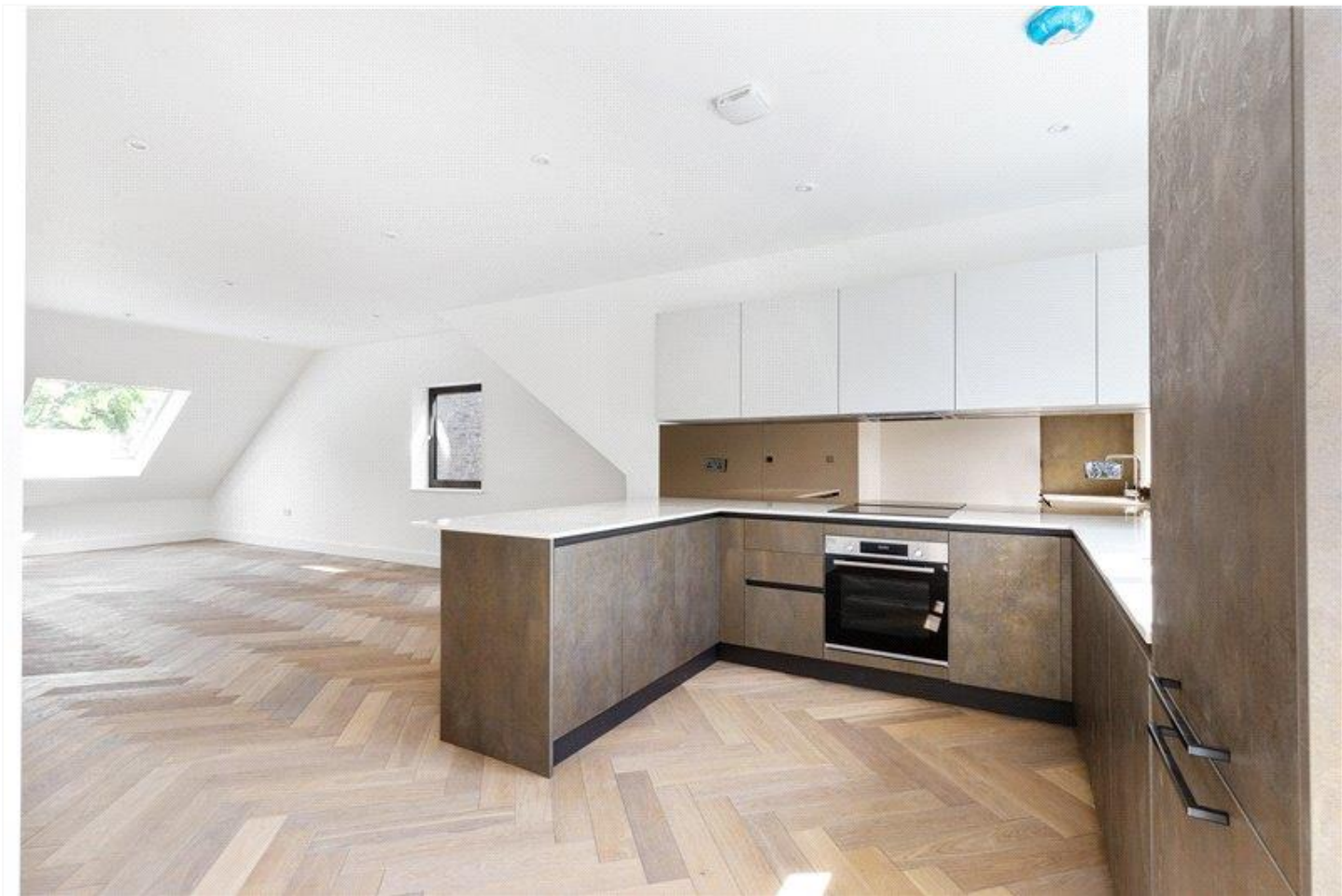
LOCAL AUTHORITY

Southwark Council, London
Council Tax Band F

TENURE

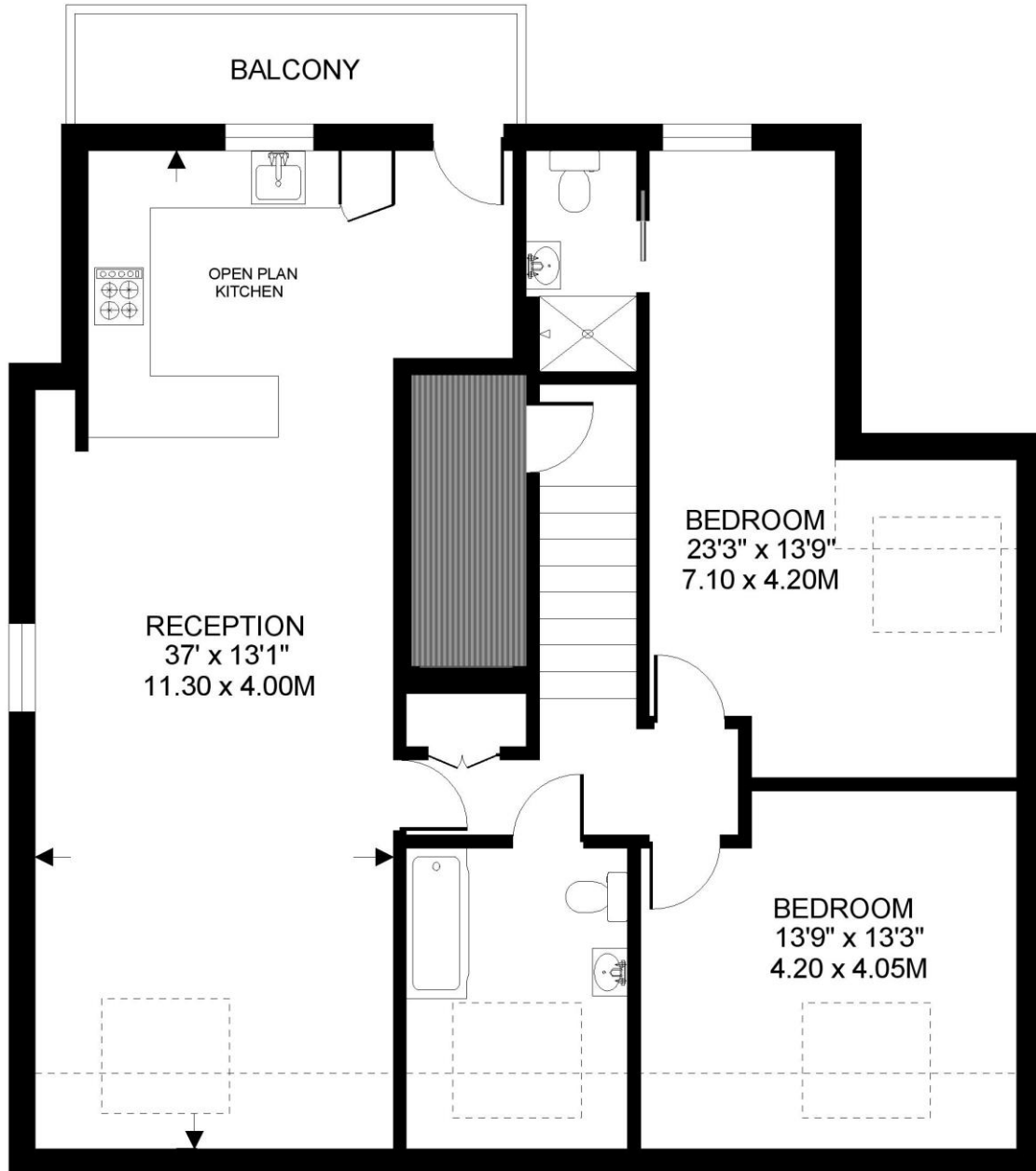
Brand new leasehold





LOVE WALK SE5
2 BEDROOM FLAT

Approximate gross floor area
1188 SQ.FT. / 110.4 SQ.M.



SECOND FLOOR 1188 SQ.FT.

This floorplan is for illustration purposes only and is not to scale. The position and size of doors, windows, appliances and other features are approximate.

Kennington | 020 7587 0600 | kennington@winkworth.co.uk