



**SYDENHAM RISE, SE23**  
**£550,000 LEASEHOLD**

**DESCRIPTION:**

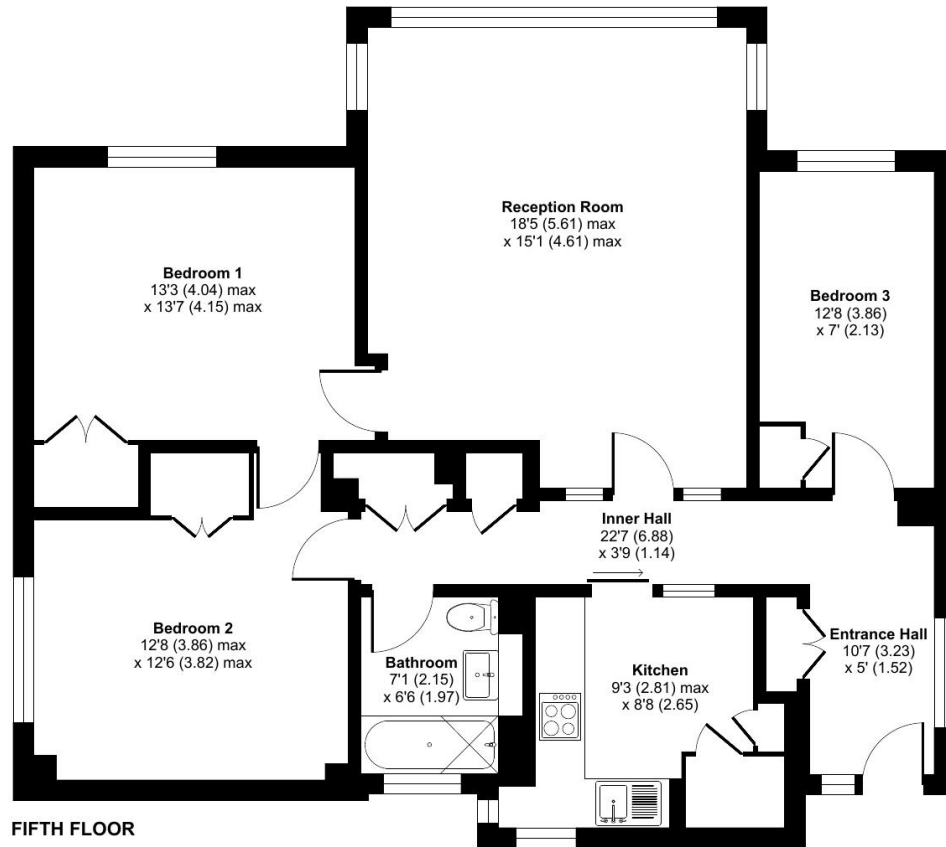
A bright and spacious Three bedroom flat on the 5th floor of Frobisher Court, nestled within the Dulwich Estate. Enjoy breathtaking views, modern interiors and plenty of natural light in this charming home, perfectly positioned for tranquil estate living with easy access to nearby shops and transport links.

**Forest Hill** | | [foresthill@winkworth.co.uk](mailto:foresthill@winkworth.co.uk)

# Sydenham Rise, London, SE23

Approximate Area = 981 sq ft / 91.1 sq m

For identification only - Not to scale



Floor plan produced in accordance with RICS Property Measurement Standards incorporating International Property Measurement Standards (IPMS2 Residential). © n/checon 2025. Produced for Winkworth Forest Hill and New Cross. REF: 1350070

This floorplan is for illustration purposes only and is not to scale. The position and size of doors, windows, appliances and other features are approximate.

**Tenure:** Leasehold