

**Ennismore Gardens, London, SW7**

£1,061 Per week

3  1  3 



Winkworth Knightsbridge  
020 7589 6616 | [knightsbridge@winkworth.co.uk](mailto:knightsbridge@winkworth.co.uk)

**Winkworth**

for every step...

A large and bright maisonette situated in a highly desirable location close to Hyde Park

---

## ABOUT THIS HOUSE

A large and bright maisonette situated on the fourth and fifth floor (no lift) of a period building in a highly desirable location in the heart of Knightsbridge and only few minutes walk from Hyde Park. The property benefits from wood flooring throughout, a large master bedroom with adjacent bathroom, two further bedrooms with en-suite bathrooms and a balcony with amazing views.

## KEY FEATURES

- 3 bedrooms
- 1 reception room
- 3 bathrooms
- 1,294 Square Feet
- Upper floor
- Prime Location











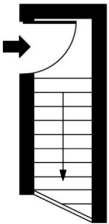




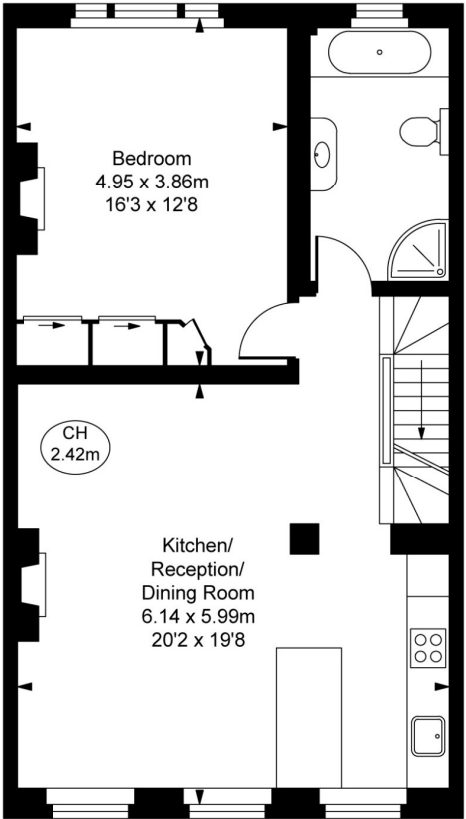
FINER DETAILS

- 3 bedrooms
- 1 reception room
- 3 bathrooms
- 1,294 Square Feet
- Upper floor
- Prime Location

Energy Efficiency Rating		
	Current	Potential
Very energy efficient - lower running costs		
(92+) A		
(81-91) B		
(69-80) C		
(55-68) D	60	79
(39-54) E		
(21-38) F		
(1-20) G		
Not energy efficient - higher running costs		
England, Scotland & Wales		
EU Directive 2002/91/EC		

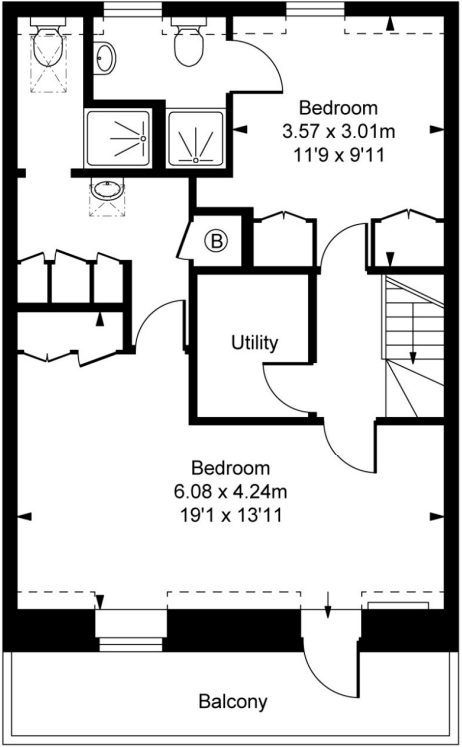


Second Floor Entrance  
Approximate Gross Internal Area  
2.25 sq m / 24 sq ft



Third Floor  
Approximate Gross Internal Area  
67.89 sq m / 731 sq ft

Ennismore Gardens, SW7  
Approximate Gross Internal Area  
121.83 sq m / 1,311 sq ft  
( Including restricted height  
under 1.5m [ - - - - - ] )  
( CH = Ceiling Heights )



Fourth Floor  
Approximate Gross Internal Area  
51.69 sq m / 556 sq ft

This plan is not to scale. It is for guidance and not for valuation purposes.  
All measurements and areas are approximate only, and have been prepared in accordance with the current edition of the RICS Code of Measuring Practice.  
© Fulham Performance





Winkworth Knightsbridge  
020 7589 6616 | [knightsbridge@winkworth.co.uk](mailto:knightsbridge@winkworth.co.uk)

**Winkworth**

for every step...