



CROSSLEY STREET, ISLINGTON, LONDON, N7  
**£1,175,000 FREEHOLD**

## A CHARMING FIVE BEDROOM VICTORIAN HOUSE ON A PEACEFUL RESIDENTIAL STREET

Islington | 0207 354 2480 | [islington@winkworth.co.uk](mailto:islington@winkworth.co.uk)

**Winkworth**

[winkworth.co.uk](http://winkworth.co.uk)

See things differently





## DESCRIPTION:

This three storey Victorian house is set on a treelined residential street in north Barnsbury.

A light filled double reception is located on the ground floor with a fully equipped kitchen found to the rear of the property alongside private rear patio garden. Five double bedrooms are spread across the upper floors with family sized bathroom and separate wc. The property benefits from a huge amount of storage as well as large attic space.

The house is perfectly set for an array of local amenities as well as being a literal stone throw from the open spaces of Paradise Park and Freightliners Farm.

Crossley street is located just off Liverpool road and is perfectly set for the bars, restaurants and shops on Upper Street. The green spaces of St Mary Magdalene Garden and Highbury fields are close by as are a fantastic selection of transport links. Highbury and Islington station provides the closest Underground and Overground links on the Victoria line whilst Caledonian road is serviced by the Piccadilly line. Drayton Park station is just moments away and provides a weekday service to Moorgate whilst various bus routes offer effortless links to Angel, the City and West End. Kings Cross is easily accessed as are international services

**Winkworth**

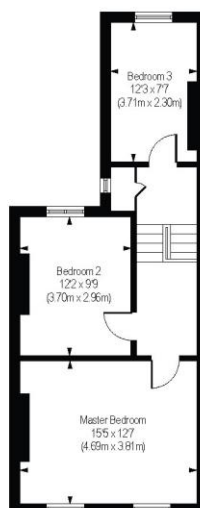




Winkworth

# Crossley Street, N7

Approx. Gross Internal Floor Area 1533 sq. ft / 142.40 sq. m



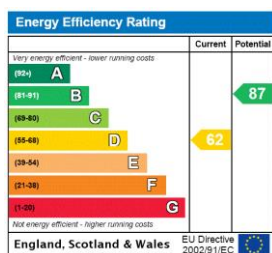
Second Floor  
Gross Internal  
Floor Area 518 sq ft



Ground Floor  
Gross Internal  
Floor Area 504 sq ft

COMPLIANT WITH RICS CODE OF MEASURING PRACTICE. Floorplan is for illustrative purposes only and is not to scale. Every attempt has been made to ensure the accuracy of the floorplan shown, however all measurements, fixtures, fittings and data shown are an approximate interpretation for illustrative purposes only. Liability for errors, omissions or mis-statement through negligence or otherwise is hereby excluded.

This floorplan is for illustration purposes only and is not to scale. The position and size of doors, windows, appliances and other features are approximate.



Islington | 0207 354 2480 | [islington@winkworth.co.uk](mailto:islington@winkworth.co.uk)

**Winkworth**

[winkworth.co.uk](http://winkworth.co.uk)

See things differently

Winkworth wishes to inform prospective buyers and tenants that these particulars are a guide and act as information only. All our details are given in good faith and believed to be correct at the time of printing but they don't form part of an offer or contract. No Winkworth employee has authority to make or give any representation or warranty in relation to this property. All fixtures and fittings, whether fitted or not are deemed removable by the vendor unless stated otherwise and room sizes are measured between internal wall surfaces, including furnishings.