

Winkworth

Combemartin Road, Southfields, SW18 5PR





A modern contemporary house offering approximately 1,750 sq. ft. and situated on this premium road in Southfields. Split over two floors and finished to an excellent standard, the property is sold with no onward chain.

Accommodation includes a superb open plan kitchen/living space benefitting from large amounts of light flooding in through the floor to ceiling windows. Four spacious double bedrooms each have access onto outside patios and are serviced by three bathrooms, two of which are en-suites. In addition, there is a handy extra room which can be used as a fifth bedroom or a home office. Garden space wraps around the entire house. Sold with no onward chain.

- FREEHOLD
- DETACHED HOUSE
- FOUR BEDROOMS
- THREE BATHROOMS
- PATIO GARDEN
- OFFICE SPACE
- SPLIT-LEVEL
- FANTASTIC CONDITION
- PREMIUM LOCATION
- CHAIN FREE

Combemartin Road, Southfields, SW18 5PR



Energy Efficiency Rating		
	Current	Potential
Very energy efficient - lower running costs		
(92+) A		92
(81-91) B	85	
(69-80) C		
(55-68) D		
(39-54) E		
(21-38) F		
(1-20) G		
Not energy efficient - higher running costs		
England, Scotland & Wales	EU Directive 2002/91/EC	

Freehold

Internal area
Approximate gross internal area:
Total 1,731 sq ft/ 161 sq m

Combemartin Road, Southfields, SW18 5PR

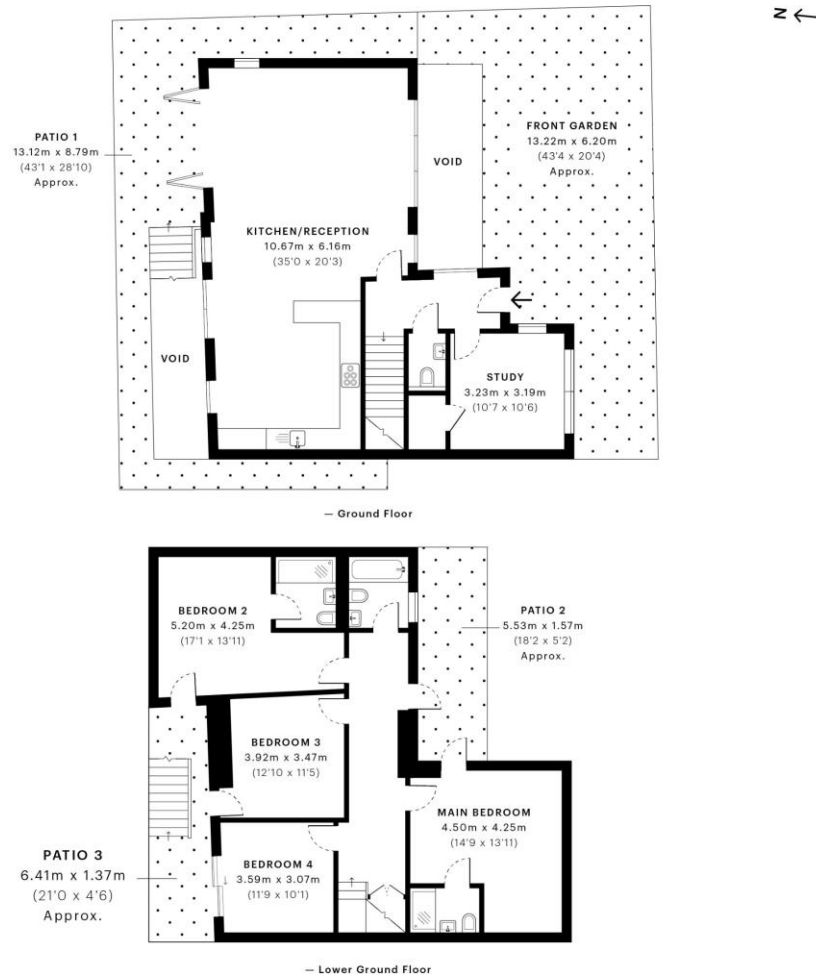
Winkworth

Combemartin Road, SW18

CAPTURE DATE 18/11/2020 LASER SCAN POINTS 6,172,271

GROSS INTERNAL AREA

160.77 sqm / 1730.51 sqft



Winkworth

Under the Property Misdescriptions Act these particulars are intended as a guide and act as information only. They give a fair overall description for the guidance of potential purchasers or tenants but do not constitute an offer or part of a contract. All details and approximate measurements are given in good faith and are believed to be correct at the time of printing, but any potential purchasers or tenants should not rely on the mis-statements or representations of fact but must satisfy themselves by inspection or otherwise as to their correctness. No employee of Winkworth has authority to make or give any representation or warranty to this property.

Southfields office 241 Wimbledon Park Road, London SW18 5RJ | Tel: 0208 877 1000 | E-mail: Southfields@winkworth.co.uk
winkworth.co.uk

W621 Ravensworth 01670 713330