



Belgrave Gardens, St John's Wood, London, NW8

£400,000 *Share of Freehold*



A beautiful, one bedroom top-floor apartment, with high ceilings, which has fantastic natural light throughout and views across gardens. The property has a modern, fully-fitted kitchen with composite counter-tops, a separate bathroom and engineered oak wooden flooring throughout. Located within this popular tree-lined street, just off Abbey Road, with St John's Wood High Street and Underground Station (Jubilee Line) less than one mile away. Furthermore, this flat is offered for sale with no onward chain.



Winkworth St John's Wood

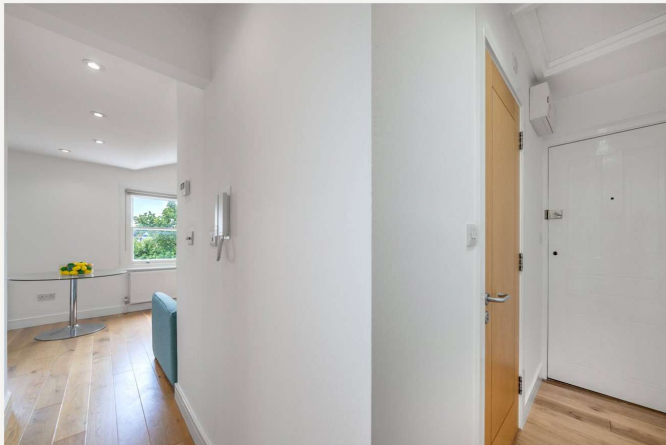
020 7586 7001 | stjohnswood@winkworth.co.uk



KEY FEATURES

- Bedroom
- Bathroom
- Open Plan Kitchen/ Reception Room
- Engineered Oak Flooring
- Leasehold





MATERIAL INFO

- Tenure:** Share of Freehold
- Term:** 981 year and 1 months
- Service Charge:** £2,456.82 per annum
- Ground Rent:** £0 Annually (subject to increase)
- Council Tax Band:** C
- EPC rating:** D
- Electricity supply:** Mains Supply
- Sewerage supply:** Mains Supply
- Water supply:** Mains Supply
- Mobile signal:** Good Outdoor and Variable In-Home

Score	Energy rating	Current	Potential
92+	A		
81-91	B		
69-80	C		
55-68	D	63 D	66 D
39-54	E		
21-38	F		
1-20	G		

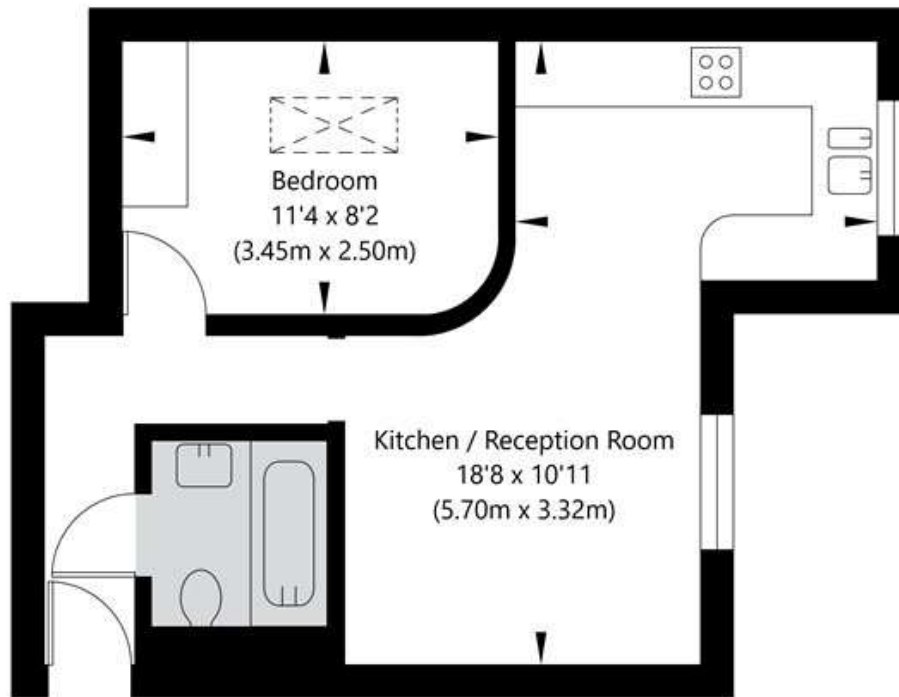
For more information, scan the QR code or visit the link below



<https://www.winkworth.co.uk/sale/property/SJD250109>

Belgrave Gardens, London NW8 0QY

Fourth Floor
GROSS INTERNAL FLOOR AREA
APPROX. 35.89 SQ M / 386 SQ FT



APPROXIMATE GROSS INTERNAL FLOOR AREA 35.89 SQ M / 386 SQ FT
THIS FLOOR PLAN IS FOR ILLUSTRATIVE PURPOSES ONLY AND
SHOULD BE USED FOR THIS PURPOSE BY PROSPECTIVE APPLICANTS AS ITS NOT TO SCALE.

(c) AMBERSHORE PIX LIMITED / PHOTO - VIDEO - FLOOR PLANS / 0800 999 1577 / WWW.AMBERSHOREPIX.CO.UK

Winkworth St John's Wood

020 7586 7001 | stjohnswood@winkworth.co.uk

Winkworth wishes to inform prospective buyers and tenants that these particulars are a guide and act as information only. All our details are given in good faith and believed to be correct at the time of printing but they don't form part of an offer or contract. No Winkworth employee has authority to make or give any representation or warranty in relation to this property. All fixtures and fittings, whether fitted or not are deemed removable by the vendor unless stated otherwise and room sizes are measured between internal wall surfaces, including furnishings.