



CAMBRIDGE GARDENS, LONDON, W10
£1,650 PER MONTH FURNISHED



CAMBRIDGE GARDENS, LONDON, W10

This fabulous studio apartment, presented in excellent condition throughout, forms part of an attractive double-fronted period conversion.

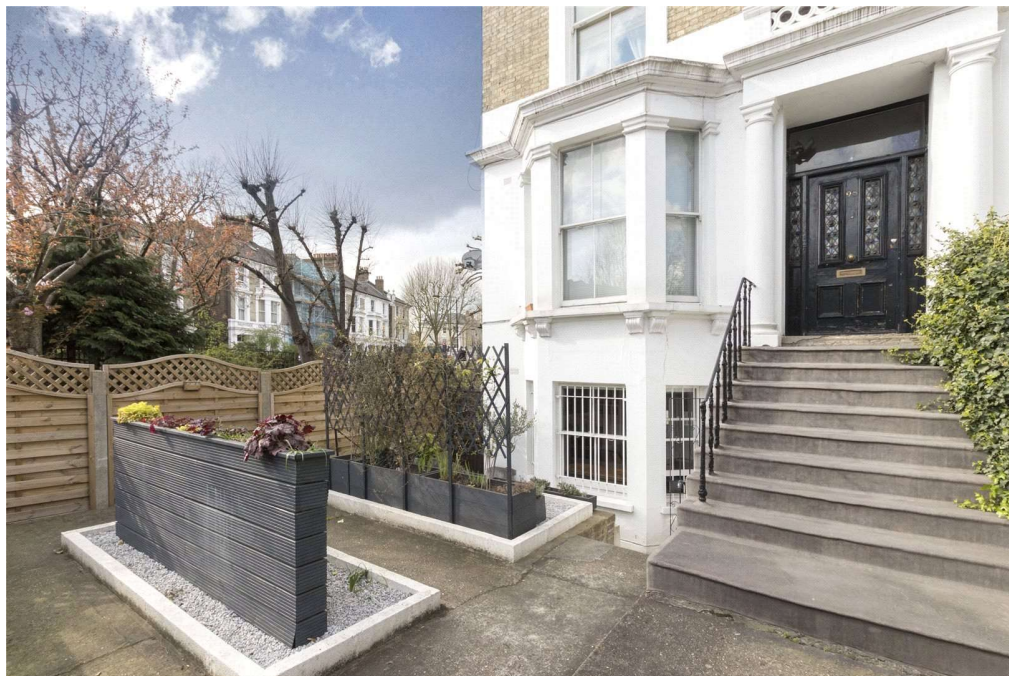
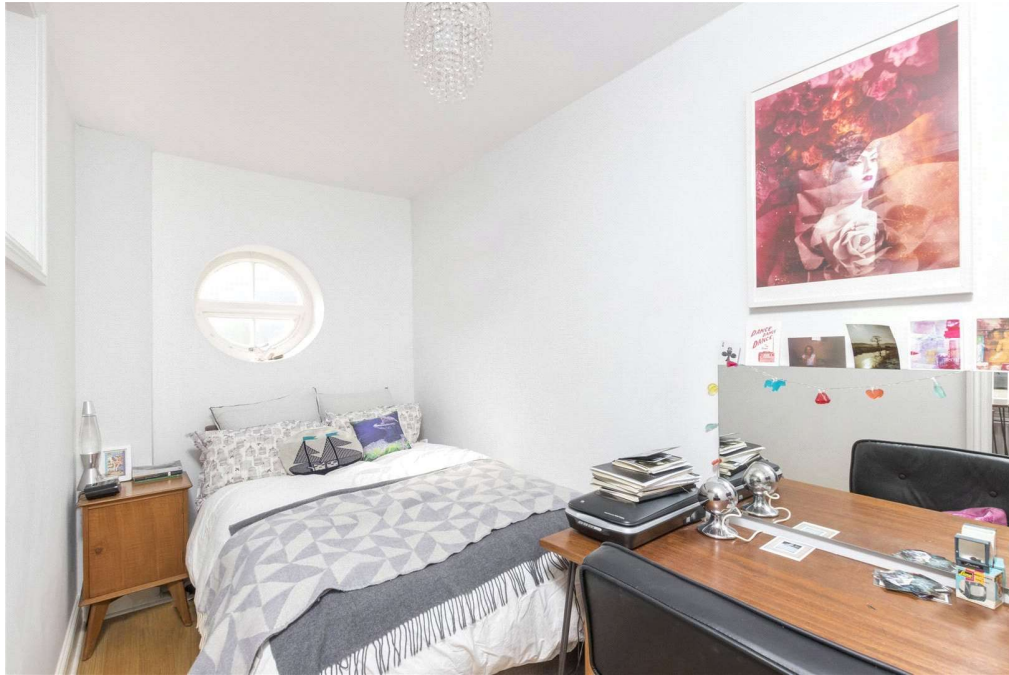
Situated at the front of the building on the lower ground floor, the apartment benefits from a private street entrance. This leads into a bright and spacious reception/studio room featuring a south-facing bay window, ample space for dining, and a modern open-plan kitchen.

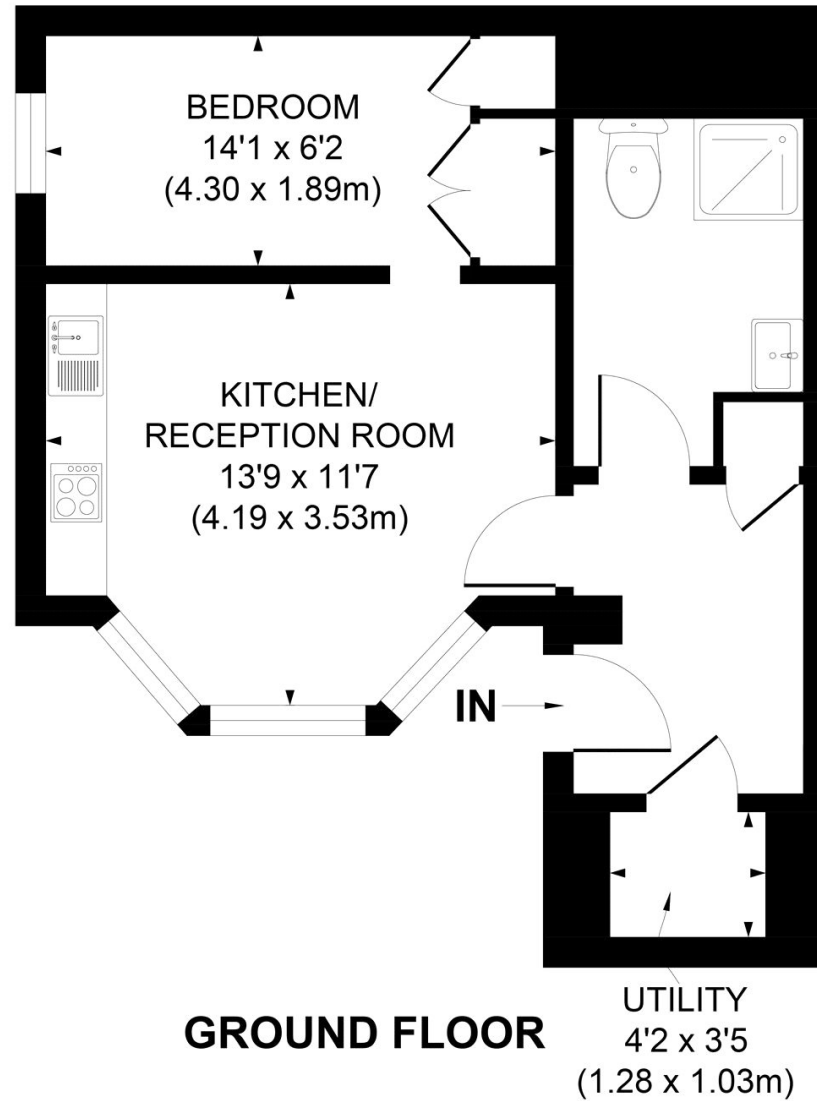
The property further comprises a separate sleeping area with fitted cupboards, a contemporary shower room, utility room, and an additional storage cupboard. Residents are also entitled to an RBKC parking permit.

LOCATION

Ideally located on a sought-after residential road in the heart of Ladbroke Grove, North Kensington, the property is just moments from Ladbroke Grove Underground Station, providing quick and convenient access to Central London and beyond.







APPROX. GROSS INTERNAL FLOOR AREA 389 SQ. FT / 36.12 SQ. M

Illustration for identification purpose only, not to scale
All measurements are maximum, and includes wardrobes and window bays where applicable
Prepared by Pixangle ©. Tel 020 8870 2118

Energy Efficiency Rating		Current	Potential
Very energy efficient - lower running costs			
(90-100)	A		
(81-90)	B		
(69-80)	C		
(55-68)	D	66	69
(39-54)	E		
(21-38)	F		
(1-20)	G		
Not energy efficient - higher running costs			
England, Scotland & Wales		EU Directive 2002/91/EC	

North Kensington | 020 7792 5000 | northkensington@winkworth.co.uk

winkworth.co.uk

Winkworth wishes to inform prospective buyers and tenants that these particulars are a guide and act as information only. All our details are given in good faith and believed to be correct at the time of printing but they don't form part of an offer or contract. No Winkworth employee has authority to make or give any representation or warranty in relation to this property. All fixtures and fittings, whether fitted or not are deemed removable by the vendor unless stated otherwise and room sizes are measured between internal wall surfaces, including furnishings.

Winkworth