



**GINGER LINE BUILDING, 281 THE HIGHWAY, LONDON, E1W**  
**£2,600 PER MONTH FURNISHED**

## EXCEPTIONAL ONE BEDROOM APARTMENT ON THE EDGE OF WAPPING.

**Shoreditch** | 020 7749 7650 | [shoreditch@winkworth.co.uk](mailto:shoreditch@winkworth.co.uk)

Tenant Fees Apply: Details of fees for tenant referencing, tenancy agreement admin fees and renewal fees are available on the Winkworth website and the link can be found with the displayed rent for the property. Tenants should ensure they are fully conversant with these upfront fees and other costs that are involved at the outset of the tenancy before making an offer to rent and your local Winkworth office will provide written details upon request.

[winkworth.co.uk](http://winkworth.co.uk)

**Winkworth**

See things differently





## DESCRIPTION:

An exceptional one bedroom apartment in the highly sought after Ginger Line Building just moments away from Wapping and Shadwell DLR/Overground Station.

This property has been finished to an impeccable standard with high attention to detail particularly paid to the furnishings. It comprises large reception room which leads onto the private balcony, open-plan high-spec kitchen, hallway, large double bedroom and contemporary bathroom suite. Also benefitting from a communal roof terrace.

Situated on the 7th floor this stunning apartment is perfect for a professional couple that need excellent transport options and a great living space.

**Winkworth**

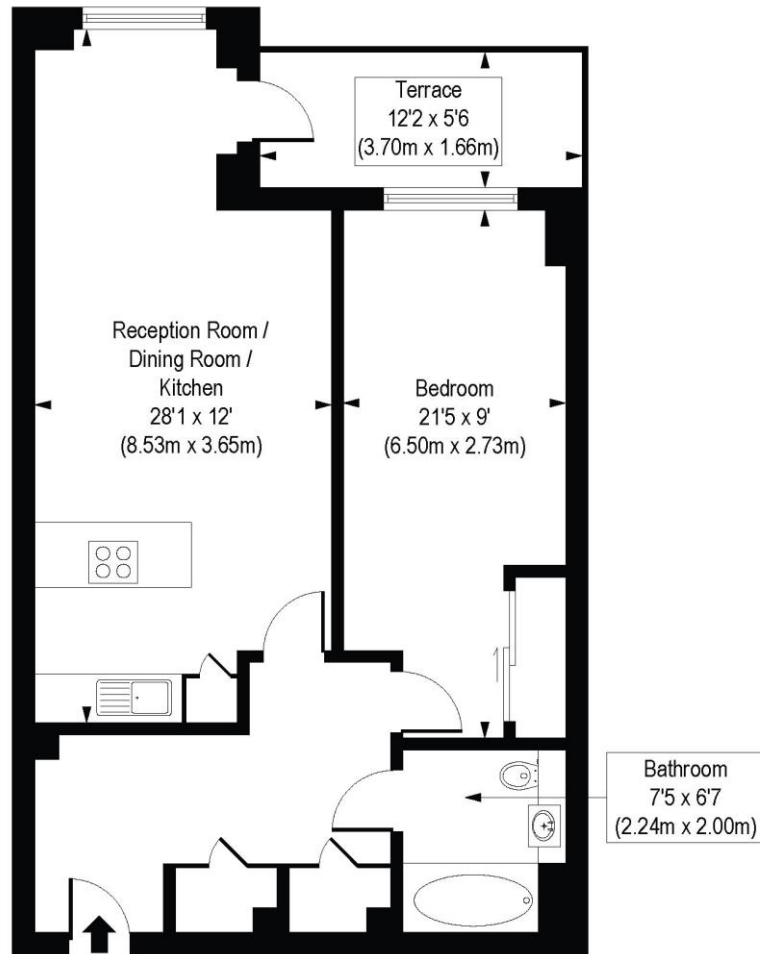


Winkworth



## The Highway, E1W

Approx. Gross Internal Floor Area 685 sq. ft / 63.60 sq. m



Seventh Floor

COMPLIANT WITH RICS CODE OF MEASURING PRACTICE. Floorplan is for illustrative purposes only and is not to scale. Every attempt has been made to ensure the accuracy of the floorplan shown, however all measurements, fixtures, fittings and data shown are an approximate interpretation for illustrative purposes only. Liability for errors, omissions or mis-statement through negligence or otherwise is hereby excluded.

This floorplan is for illustration purposes only and is not to scale. The position and size of doors, windows, appliances and other features are approximate.

Shoreditch | 020 7749 7650 | [shoreditch@winkworth.co.uk](mailto:shoreditch@winkworth.co.uk)

**Winkworth**

[winkworth.co.uk](http://winkworth.co.uk)

See things differently

Winkworth wishes to inform prospective buyers and tenants that these particulars are a guide and act as information only. All our details are given in good faith and believed to be correct at the time of printing but they don't form part of an offer or contract. No Winkworth employee has authority to make or give any representation or warranty in relation to this property. All fixtures and fittings, whether fitted or not are deemed removable by the vendor unless stated otherwise and room sizes are measured between internal wall surfaces, including furnishings.