



FERMOYLE ROAD, W9
£1,950 PER MONTH UNFURNISHED

Winkworth



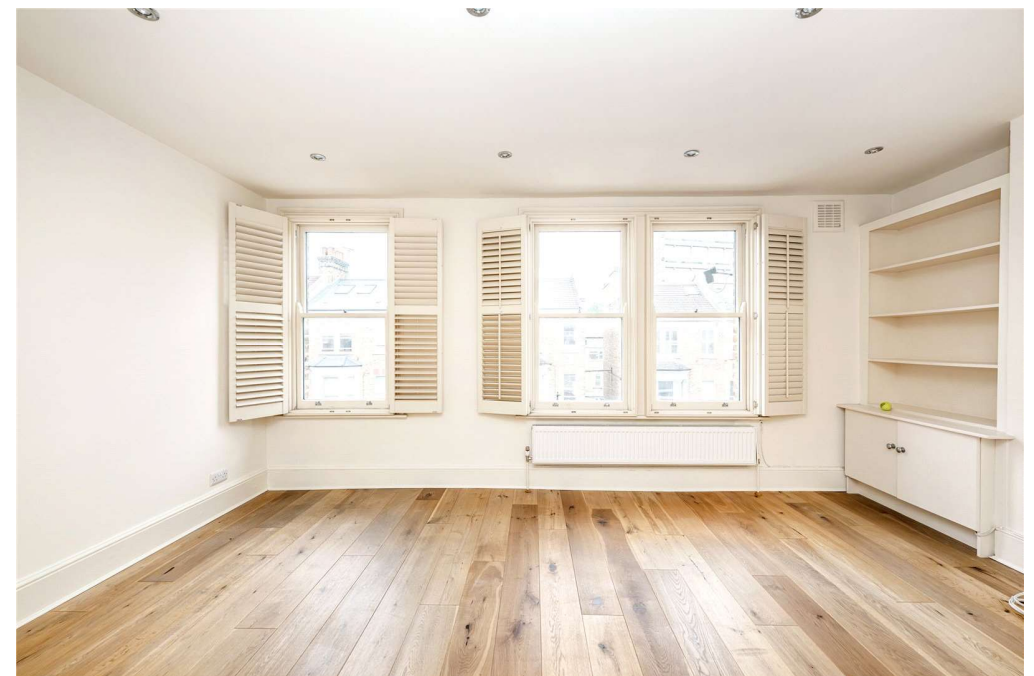
FERMOY ROAD, W9

A stunning one-bedroom Victorian conversion recently refurbished to an high standard and available immediately. The property is located on the third floor of a Victorian terrace in Westbourne Park , moments from the tube and access to the grand union canal which offers a direct walk to Paddington Station.

LOCATION

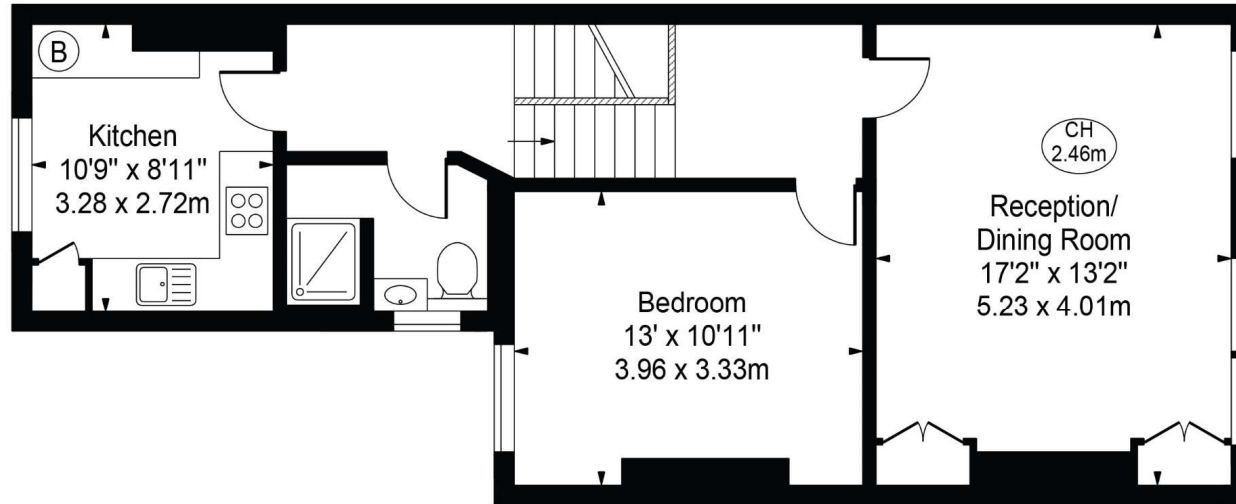
The amenities of Notting Hill, Portobello and Golborne Roads are also within easy reach. The large eat in Kitchen and beautifully kept rear garden are of particular note, offering ample dining and entertaining space.



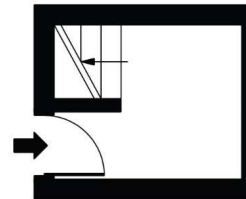


Fermoy Road

Approx. Gross Internal Area 695 Sq Ft - 64.57 Sq M



Second Floor
(655 Sq Ft - 60.85 Sq M)



First Floor Entrance
(40 Sq Ft - 3.72 Sq M)

For Illustration Purposes Only - Not To Scale

This floor plan should be used as a general outline for guidance only and does not constitute in whole or in part an offer or contract. Any intending purchaser or lessee should satisfy themselves by inspection, searches, enquiries and full survey as to the correctness of each statement. Any areas, measurements or distances quoted are approximate and should not be used to value a property or be the basis of any sale or let.

Copyright Morriarti Photography & Design LTD

Score	Energy rating	Current	Potential
92+	A		
81-91	B		
69-80	C	78 C	81 B
55-68	D		
39-54	E		
21-38	F		
1-20	G		

North Kensington | 020 7792 5000 | northkensington@winkworth.co.uk

winkworth.co.uk

Winkworth wishes to inform prospective buyers and tenants that these particulars are a guide and act as information only. All our details are given in good faith and believed to be correct at the time of printing but they don't form part of an offer or contract. No Winkworth employee has authority to make or give any representation or warranty in relation to this property. All fixtures and fittings, whether fitted or not are deemed removable by the vendor unless stated otherwise and room sizes are measured between internal wall surfaces, including furnishings.

Winkworth