



DAYWORTH MEWS, READING, BERKSHIRE, RG30 2RR
£1,200 PER MONTH UNFURNISHED

**MODERN TWO BEDROOM SECOND FLOOR
APARTMENT LOCATED TO THE WEST OF
READING TOWN CENTRE.**

Reading | 0118 4022 300 | reading@winkworth.co.uk

Winkworth

for every step...

winkworth.co.uk



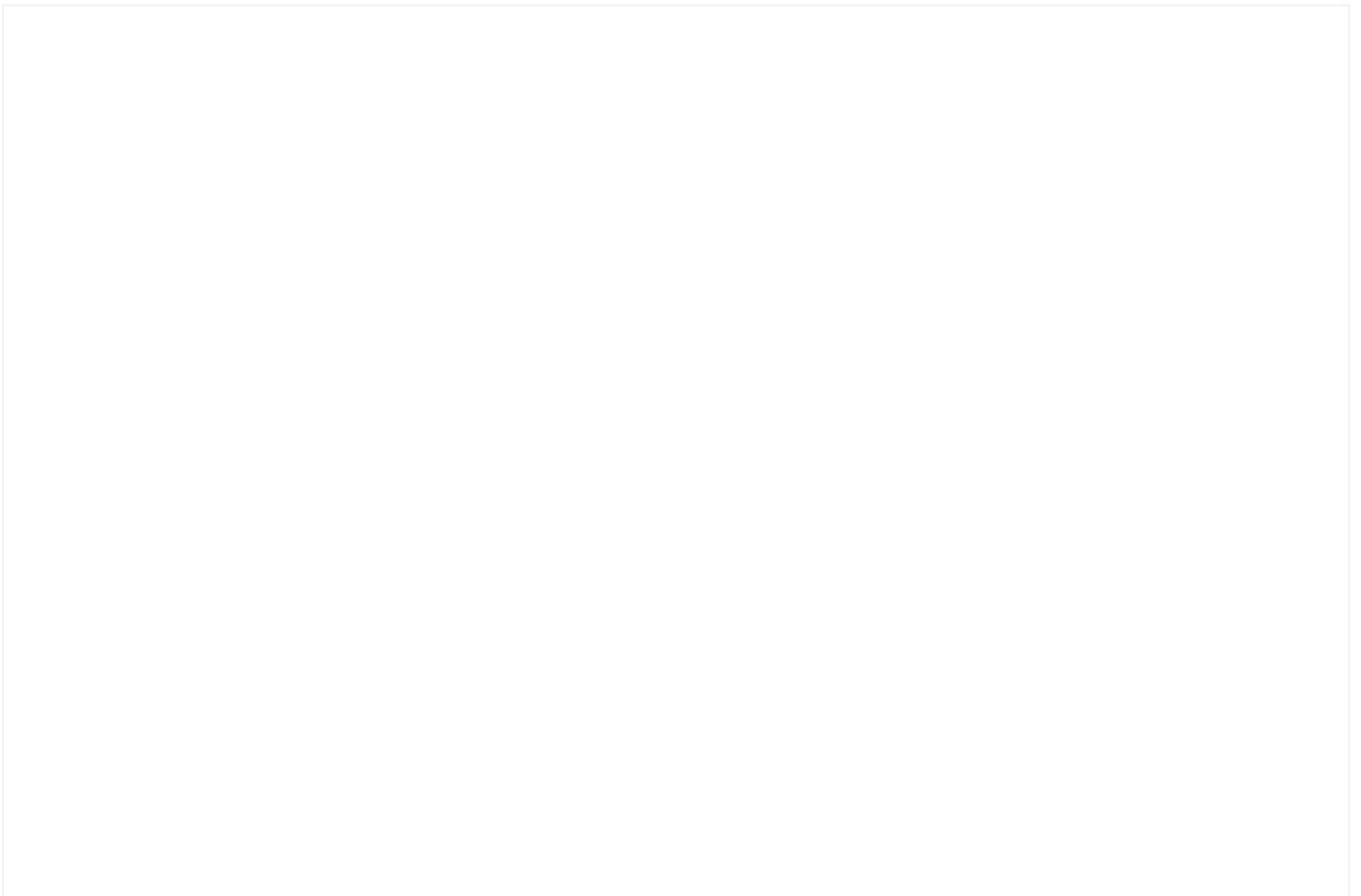
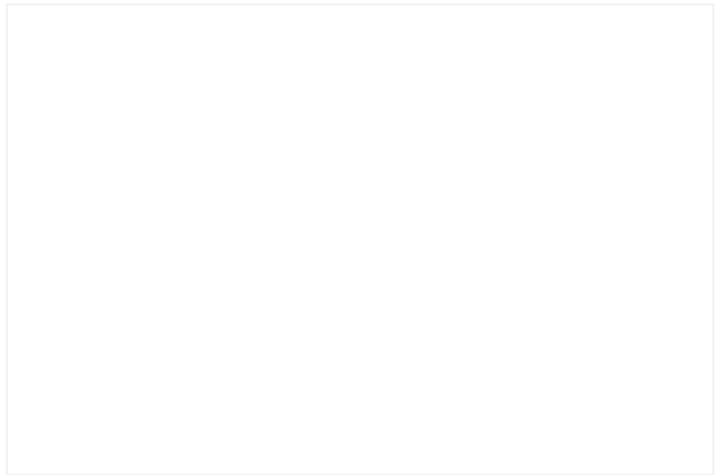
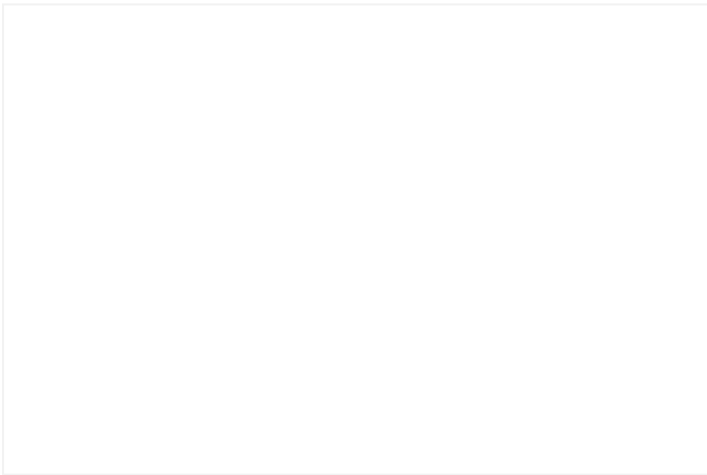
DESCRIPTION:

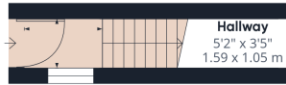
Modern two bedroom second floor apartment located to the west of Reading town centre. The property comprises of an open plan lounge and kitchen/breakfast room, one double bedroom, second single bedroom and a shower room. Benefits include private entrance and an allocated parking space. Available 30th June 2025. Unfurnished.

AT A GLANCE

- First floor apartment
- Two bedrooms
- Allocated parking
- Located in West Reading
- Council Tax Band C
- Available 30th June
- Unfurnished



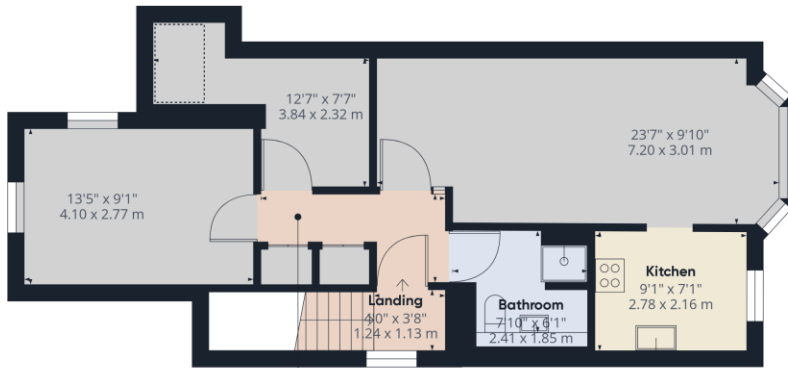




Approximate total area⁽¹⁾
671.8 ft²
62.41 m²

Reduced headroom
14.84 ft²
1.38 m²

Ground Floor



Floor 1

(1) Excluding balconies and terraces

☒ Reduced headroom
(below 1.5m/4.92ft)

While every attempt has been made to ensure accuracy, all measurements are approximate, not to scale. This floor plan is for illustrative purposes only.

GIRAFFE360

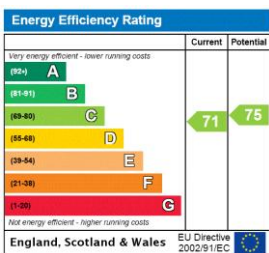
This floorplan is for illustration purposes only and is not to scale. The position and size of doors, windows, appliances and other features are approximate.

Deposit: £1,384.62

Holding Deposit: £276.92

Council Tax Band: C

Where no figures are shown, we have been unable to ascertain the information. All figures that are shown were correct at the time of printing.



Reading | 0118 4022 300 | reading@winkworth.co.uk



for every step...

winkworth.co.uk

Winkworth wishes to inform prospective buyers and tenants that these particulars are a guide and act as information only. All our details are given in good faith and believed to be correct at the time of printing but they don't form part of an offer or contract. No Winkworth employee has authority to make or give any representation or warranty in relation to this property. All fixtures and fittings, whether fitted or not are deemed removable by the vendor unless stated otherwise and room sizes are measured between internal wall surfaces, including furnishings.