

WESTBOURNE PARK ROAD, W2
£450 PER WEEK (£1,950.00 PCM) PART FURNISHED

LOCATED ON THE GROUND FLOOR OF THIS WELL-MAINTAINED PERIOD CONVERSION, WE OFFER TO LET THIS EXCEPTIONALLY BRIGHT ONE BEDROOM FLAT ON WESTBOURNE PARK ROAD.

Notting Hill Lettings | 0207 727 3227 | nottinghill@winkworth.co.uk

Winkworth

for every step...

winkworth.co.uk



DESCRIPTION:

This beautifully bright, modern one bedroom flat with hard wood flooring throughout briefly comprises of; master bedroom with built in wardrobes, house shower room with modern fittings, living/dining area, kitchen on a separate raised level and access to a private terrace.

Utilities:

Electricity – Mains

Water – Mains

Sewerage – Mains

Heating – Gas

Broadband <https://checker.ofcom.org.uk/en-gb/broadband-coverage>

Mobile Coverage <https://checker.ofcom.org.uk/en-gb/mobile-coverage>

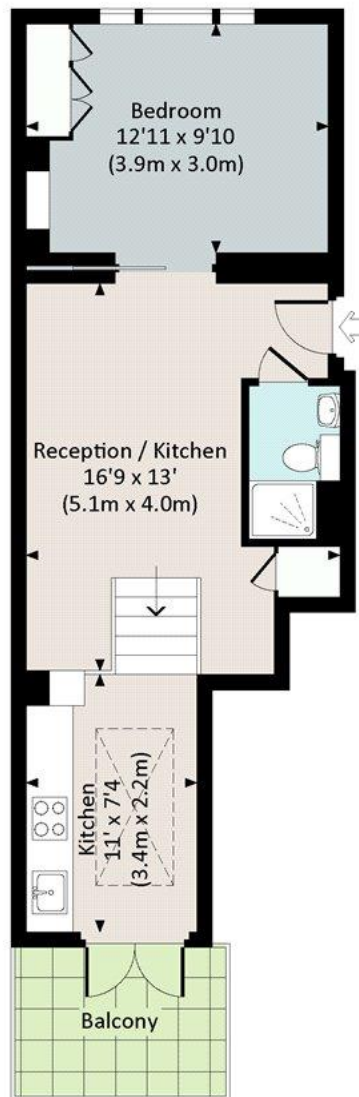
LOCATION:

Westbourne Park Road runs east west through Notting Hill and the property is located at the corner of St Lukes Road, a very short walk from the many restaurants and amenities of both Westbourne Grove and Portobello Road.



WESTBOURNE PARK ROAD, W2

Approx. gross internal area
442 Sq Ft. / 41.1 Sq M.



GROUND FLOOR



All measurements have been made in accordance with RICS Code of Measuring Practice which are approximate only and only for illustrative purposes. For the avoidance of doubt, Dowling Jones Design shall not be liable for any reliance on these measurements. © 2013 www.dowlingjones.com 020 7610 9933

This floorplan is for illustration purposes only and is not to scale. The position and size of doors, windows, appliances and other features are approximate.

Energy Efficiency Rating		
	Current	Potential
Very energy efficient - lower running costs		
(92-100) A		
(81-91) B		
(69-80) C	76	80
(55-68) D		
(49-54) E		
(39-48) F		
(21-38) G		
Not energy efficient - higher running costs		
England, Scotland & Wales EU Directive 2002/91/EC		

Deposit: £2,250

Holding Deposit: £450

Council Tax Band: D (Westminster)

Where no figures are shown, we have been unable to ascertain the information. All figures that are shown were correct at the time of printing.

Notting Hill Lettings | 0207 727 3227 | nottinghill@winkworth.co.uk

Winkworth

for every step...

winkworth.co.uk

Winkworth wishes to inform prospective buyers and tenants that these particulars are a guide and act as information only. All our details are given in good faith and believed to be correct at the time of printing but they don't form part of an offer or contract. No Winkworth employee has authority to make or give any representation or warranty in relation to this property. All fixtures and fittings, whether fitted or not are deemed removable by the vendor unless stated otherwise and room sizes are measured between internal wall surfaces, including furnishings.