

**CORDWAINER HOUSE, MARE STREET, LONDON, E8**  
**£129,000 LEASEHOLD**

**EXCELLENT ONE BEDROOM APARTMENT  
 WITH A PRIVATE BALCONY CLOSE TO  
 LONDON FIELDS.**

Hackney | 020 8986 4216 | [hackney@winkworth.co.uk](mailto:hackney@winkworth.co.uk)

**Winkworth**

[winkworth.co.uk](http://winkworth.co.uk)

See things differently





## DESCRIPTION:

Shared Ownership with a 30 % Share. Monthly rental is £507.27

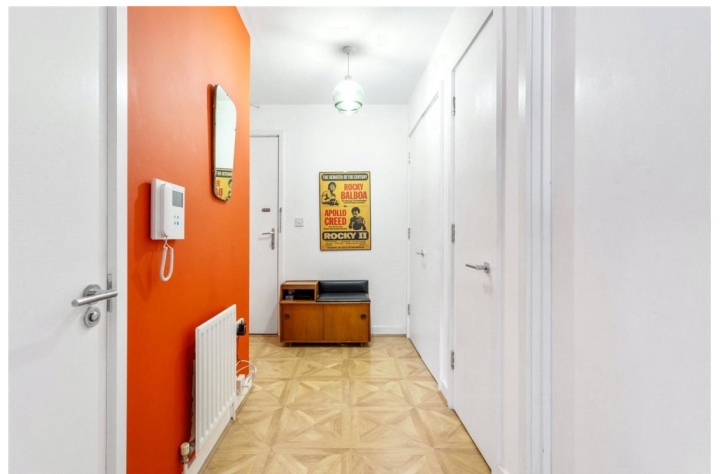
Set within a popular development on the corner of Mare Street and Ash Grove, this beautifully presented one-bedroom modern apartment occupies a desirable fourth-floor position. Ideally located between the green spaces of Victoria Park and London Fields, the location is one of East London's most vibrant neighbourhoods.

The internal space comprises of an entrance hallway with excellent internal storage cupboards available, an inviting reception with a west-facing aspect allowing for plenty of natural light, wood flooring and large sliding doors that open out to a great balcony, perfect for morning coffee and space for a table and chairs. The kitchen is open plan to the reception area but slightly set back, allowing for some separation whilst cooking, a well-proportioned double bedroom with internal wardrobes and a spacious bathroom suite completes the layout.

Situated moments from the boutiques, cafés, and eateries of Victoria Park Village and Broadway Market, the property is perfectly placed to enjoy the best of Hackney living. Excellent transport connections are available nearby via London Fields and Cambridge Heath Overground stations, along with well-served local bus routes.

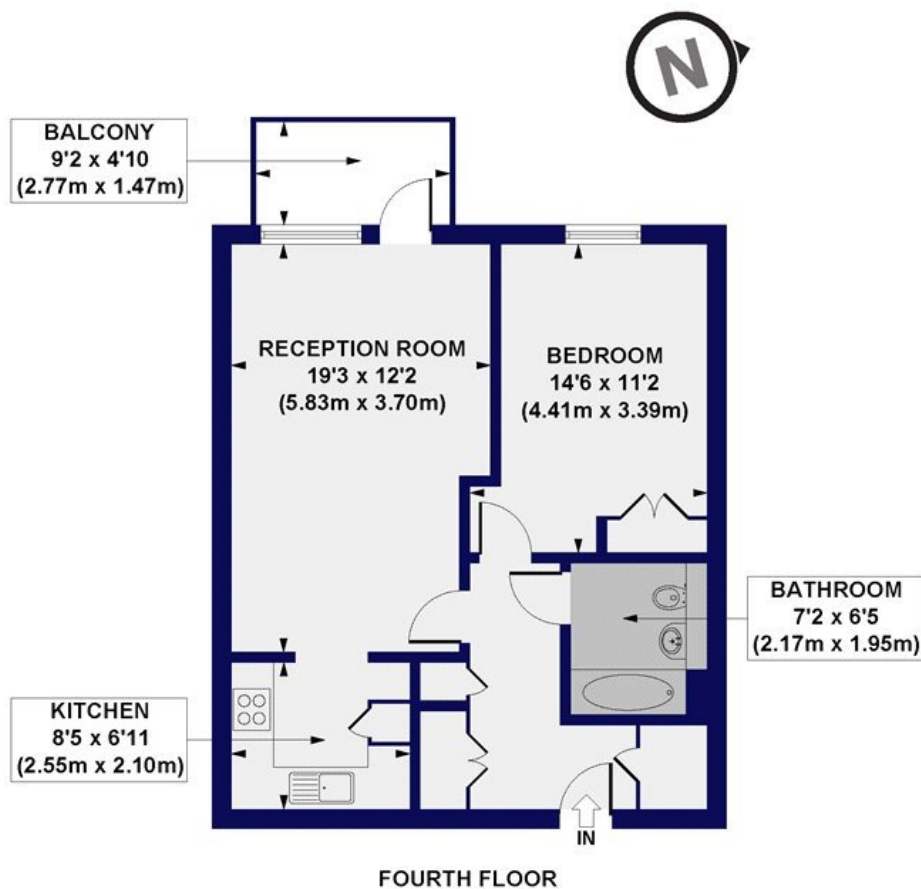
**Winkworth**





Winkworth

**Cordwainer House, Mare Street, E8**  
 Approx. Gross Internal Floor Area 591 sq. ft / 54.94 sq. m



All measurements of walls, doors, windows, fittings and appliances, including their size and location, are shown as standard sizes and do not constitute any warranty or representation by the seller, their agent or CP Creative. Any intending purchaser must satisfy himself by inspection or otherwise as to the correctness of the information contained in these plans. This plan is for illustrative purposes only and should be used as such by any prospective purchasers.

**Winkworth**

This floorplan is for illustration purposes only and is not to scale. The position and size of doors, windows, appliances and other features are approximate.

Score	Energy rating	Current	Potential
92+	A		
81-91	B		
69-80	C	80 C	80 C
55-68	D		
39-54	E		
21-38	F		
1-20	G		



<https://www.winkworth.co.uk/sale/property/HAC250285>

**Tenure:** Leasehold

**Term:** 109 year and 0 months

**Service Charge:** £2122 per annum Sinking Fund  
 Contribution of £383.64 per annum

**Ground Rent:** £ 0

**Council Tax Band:** C

Where no figures are shown, we have been unable to ascertain the information. All figures that are shown were

Hackney | 020 8986 4216 | [hackney@winkworth.co.uk](mailto:hackney@winkworth.co.uk)

**Winkworth**

[winkworth.co.uk](http://winkworth.co.uk)

See things differently

Winkworth wishes to inform prospective buyers and tenants that these particulars are a guide and act as information only. All our details are given in good faith and believed to be correct at the time of printing but they don't form part of an offer or contract. No Winkworth employee has authority to make or give any representation or warranty in relation to this property. All fixtures and fittings, whether fitted or not are deemed removable by the vendor unless stated otherwise and room sizes are measured between internal wall surfaces, including furnishings.