



Lilac Way

Basingstoke RG23 8AQ

Description

This large two bedroom mid terrace house has been renovated and is offered for sale with no onward chain. It has very spacious accommodation and further benefits from a good size newly landscaped garden.

The current owners have transformed a once neglected property into a delightful home, ready for occupation.

The living room is situated to the rear of the property and from here you can access the new modern kitchen and utility room which has a newly installed boiler, plus the addition of a downstairs cloakroom.

Upstairs there are two double bedrooms and a new white bathroom suite.

Externally the garden has been landscaped for low maintenance and there is also rear access.

Parking is on street and non allocated.



Winkworth

Accommodation

NO ONWARD CHAIN

Hallway

Kitchen/breakfast room

Utility room

Downstairs cloakroom

Living

Two double bedrooms

Bathroom

Garden

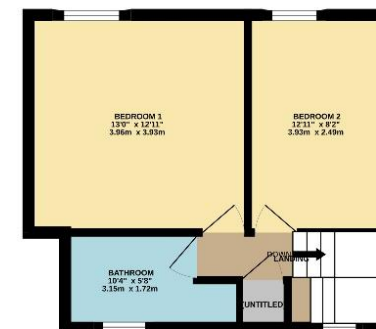
All details are given in good faith and are believed to be correct at time of printing. Winkworth give no representation as to their accuracy and potential purchasers or tenants must satisfy themselves by inspection or otherwise as to their correctness. No employee of Winkworth has authority to make or give any representation or warranty in relation to this property.

Score	Energy rating	Current	Potential
92+	A		
81-91	B		88 B
69-80	C		
55-68	D	71 C	
39-54	E		
21-38	F		
1-20	G		

GROUND FLOOR



1ST FLOOR



Whilst every attempt has been made to ensure the accuracy of the description contained here, measurements of doors, windows, rooms and any other items are approximate and no responsibility is taken for any error, omission or mis-statement. This plan is for illustrative purposes only and should be used as such by any prospective purchaser. The services, systems and appliances shown have not been tested and no guarantee as to their operability or efficiency can be given.
Made with floorplan 5.0.2.2



Basingstoke Office

10B Church Street, Basingstoke, Hampshire, RG21 7QE

01256 811730 | basingstoke@winkworth.co.uk

winkworth.co.uk/Basingstoke

Winkworth

See things differently.