



## QUEEN'S CLUB GARDENS, W14 £2,850 PER MONTH

Located within the highly sought-after and historic Queens Club Gardens, this beautifully presented two-bedroom apartment offers an exceptional blend of period charm and contemporary comfort.

Fulham & Parsons Green | 020 7731 3388 | [fulham@winkworth.co.uk](mailto:fulham@winkworth.co.uk)

Tenant Fees Apply: Details of fees for tenant referencing, tenancy agreement admin fees and renewal fees are available on the Winkworth website and the link can be found with the displayed rent for the property. Tenants should ensure they are fully conversant with these upfront fees and other costs that are involved at the outset of the tenancy before making an offer to rent and your local Winkworth office will provide written details upon request.

[winkworth.co.uk](http://winkworth.co.uk)

**Winkworth**

for every step...





Positioned on the ground floor of an attractive red-brick mansion block, the property boasts an internal area of approximately 742 sq ft and benefits from high ceilings, large sash windows, and an abundance of natural light throughout.

The apartment opens into a welcoming entrance hall that leads through to a spacious and tastefully decorated reception room. With bespoke fitted shelving, plantation shutters, and a large window overlooking the quiet communal gardens, this room provides a perfect setting for both entertaining and relaxing. To the rear of the property is a generously sized kitchen, thoughtfully designed with ample cabinetry and warm wooden worktops. The kitchen comfortably accommodates a dining area, making it a true heart of the home, and a useful utility cupboard.

The principal bedroom is a wonderfully proportioned space and features ample built-in wardrobes and soft, neutral décor. A second double bedroom offers versatility for use as a guest room, nursery, or home office, and is similarly well-appointed with integrated storage. The bathroom, positioned between the two bedrooms, is stylish and functional, complete with a full-size bathtub, overhead shower, and classic fittings that complement the apartment's elegant aesthetic.

Residents of Queens Club Gardens enjoy access to over two acres of meticulously maintained communal gardens and private tennis courts, as well as the convenience of on-site porter services.

The location offers excellent transport links, with Barons Court and West Kensington Underground stations just a short walk away, providing swift access to the City and West End via the District and Piccadilly Lines. Local amenities, boutique shops, restaurants, and the renowned Queen's Club are all within easy reach, making this an ideal home for professional tenants seeking refined living in a prime London neighbourhood.

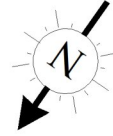




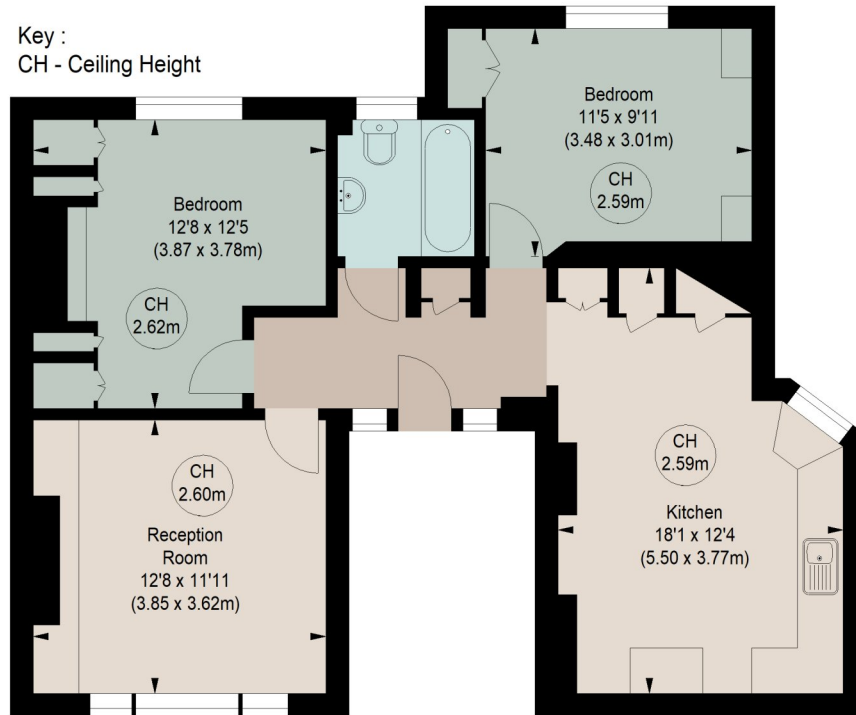


# RUSKIN MANSIONS, QUEENS CLUB GARDENS, W14

Approximate gross internal area  
742 sq ft / 68.98 sq m



Key :  
CH - Ceiling Height



## GROUND FLOOR

The floor plan is not to scale and measurements and areas shown are approximate and therefore should be used for illustrative purposes only. The plan has been prepared in accordance with the RICS code of Measuring Practice and whilst we have confidence in the information produced, it must not be relied on. If there is any aspect of particular importance, you should carry out or commission your own inspection of the property.

This floorplan is for illustration purposes only and is not to scale. The position and size of doors, windows, appliances and other features are approximate.

Fulham & Parsons Green | 020 7731 3388 | fulham@winkworth.co.uk

# Winkworth

for every step...

[winkworth.co.uk](http://winkworth.co.uk)

Winkworth wishes to inform prospective buyers and tenants that these particulars are a guide and act as information only. All our details are given in good faith and believed to be correct at the time of printing but they don't form part of an offer or contract. No Winkworth employee has authority to make or give any representation or warranty in relation to this property. All fixtures and fittings, whether fitted or not are deemed removable by the vendor unless stated otherwise and room sizes are measured between internal wall surfaces, including furnishings.