



ST. PAULS AVENUE, HARROW, HA3
£550,000 FREEHOLD

THREE BEDROOM TERRACED HOUSE IN HARROW

Kingsbury | 020 8204 0000 | kingsbury@winkworth.co.uk

Winkworth

winkworth.co.uk

See things differently

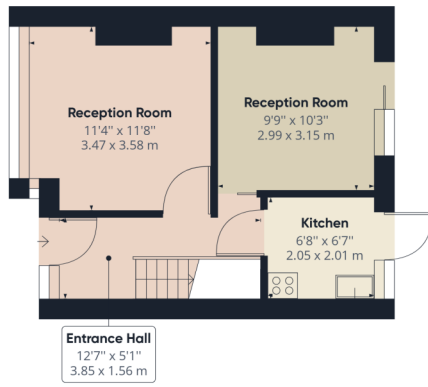


DESCRIPTION: This three bedroom mid terrace home has been loved through generations for over fifty years and is readily available for a new family to put their creative modern stamp on it. The property is made up of a homely reception room, dining room overlooking and allowing access to the garden, a simple kitchen, three well-proportioned bedrooms, and a family shower room. Further benefits include a generous rear garden and scope to extend (STPP). Midway between Kingsbury and Queensbury Stations (Jubilee Line - both less than half a mile away) and shops, schools, and amenities. No upper chain. An internal viewing is advised to appreciate this property's location and potential.





Winkworth



Ground Floor



Floor 1

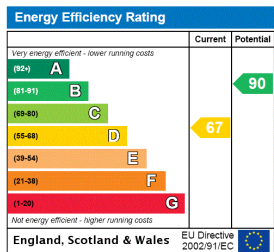
Approximate total area⁽¹⁾
700.16 ft²
65.05 m²

(1) Excluding balconies and terraces

While every attempt has been made to ensure accuracy, all measurements are approximate, not to scale. This floor plan is for illustrative purposes only.

GIRAFFE360

This floorplan is for illustration purposes only and is not to scale. The position and size of doors, windows, appliances and other features are approximate.



Kingsbury | 020 8204 0000 | kingsbury@winkworth.co.uk

