

Mansfield Street, London, W1G
£4,375,000 *Share of freehold*

2  2  2 



Winkworth Mayfair
020 7589 6616 | sales.mayfair@winkworth.co.uk

Winkworth
for every step...

Elegant Period Apartment with Modern Comforts in the Heart of Marylebone

ABOUT THIS HOUSE

A two-bedroom, two-bathroom apartment situated on the upper floor of a period building with lift access in Marylebone. The property offers two reception rooms providing flexible living and dining space. The separate kitchen is fully fitted with contemporary appliances and storage. Both bedrooms are well-proportioned, with the main bedroom featuring an en-suite bathroom. There is an additional bathroom serving the second bedroom and guests. The building benefits from porter/concierge services. Access to the apartment is provided via a lift. The location provides access to a wide range of local amenities, including shops, restaurants, and cafes. Transport connections are available nearby, offering routes to central London and other areas. Green spaces and leisure facilities are also accessible in the surrounding area. This property is suitable for those seeking an apartment with period features combined with modern fittings in a well-regarded residential setting.

KEY FEATURES

- 2 bedrooms
- 2 reception room
- 2 bathrooms
- 1,799 Square Feet
- Upper floor with lift
- Decorated to a high standard

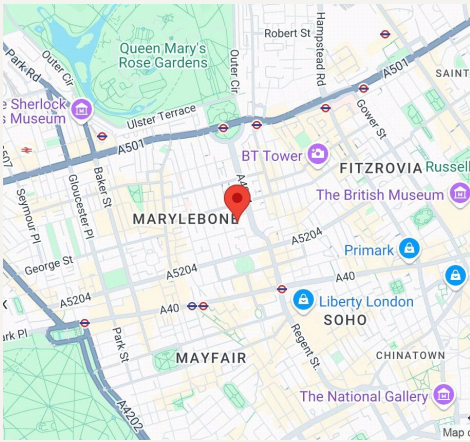












Mansfield Street, W1G

Approximate Gross Internal Area
1799 sq ft / 167.1 sq m

FINER DETAILS

- 2 bedrooms
- 2 reception room
- 2 bathrooms
- 1,799 Square Feet
- Upper floor with lift
- Decorated to a high standard

Score	Energy rating	Current	Potential
92+	A		
81-91	B		83 B
69-80	C		
55-68	D	66 D	
39-54	E		
21-38	F		
1-20	G		

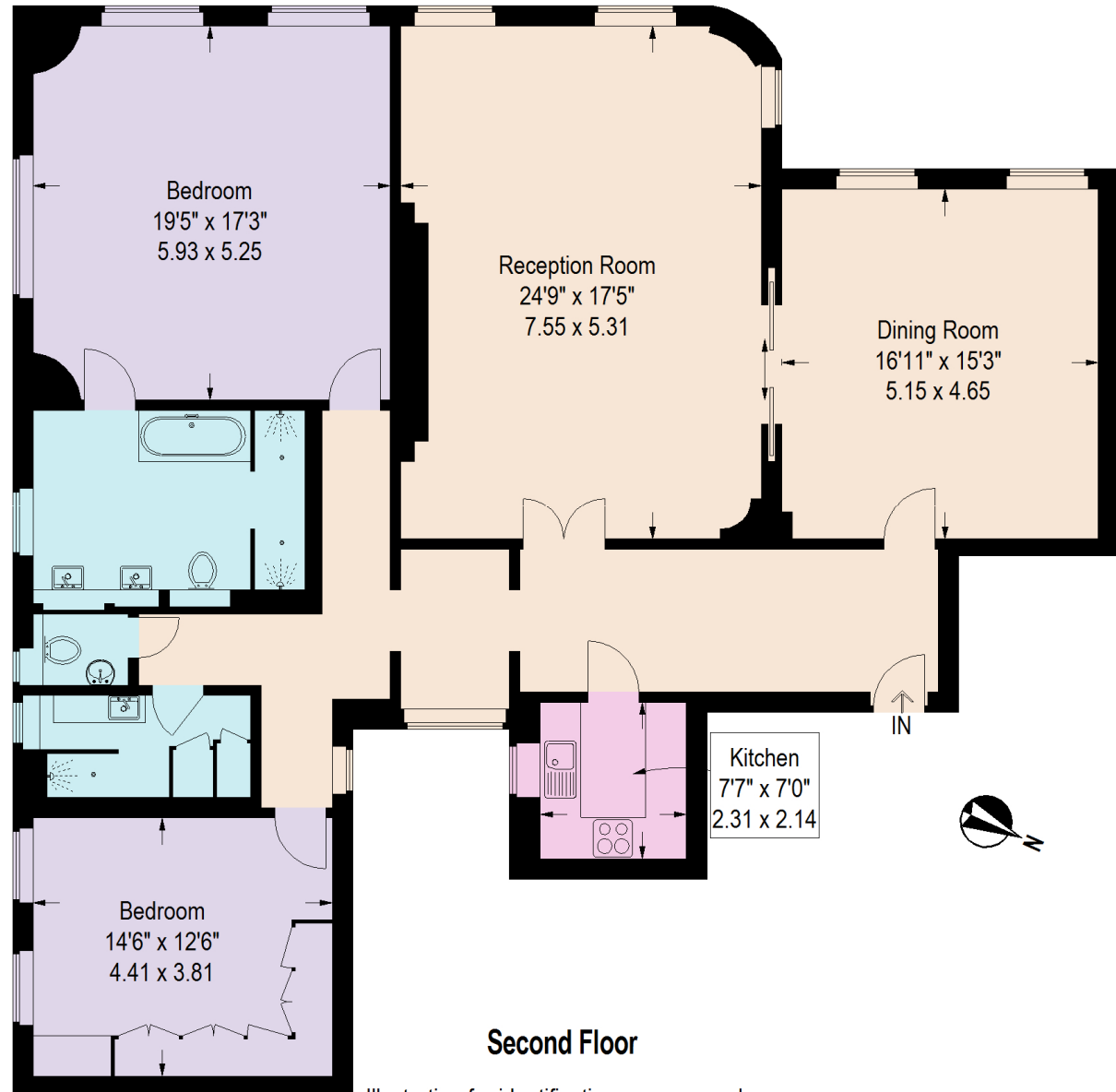


Illustration for identification purposes only,
measurements are approximate, not to scale.



Winkworth Mayfair
020 7589 6616 | sales.mayfair@winkworth.co.uk

Winkworth

for every step...