



PETHERTON ROAD, LONDON, N5
£800,000 SHARE OF FREEHOLD

A SPACIOUS, THREE DOUBLE BEDROOM, TWO BATHROOM APARTMENT FINISHED TO A HIGH STANDARD IN HIGHBURY.

Highbury | 0207 989 7000 | highbury@winkworth.co.uk

Winkworth

winkworth.co.uk

See things differently



DESCRIPTION:

A stunning, three double bedroom, two bathroom period conversion positioned across the top two floors of this handsome Victorian building in Highbury, N5. Standing at 931 sqft, the property benefits from a wealth of natural light throughout from an east to west facing aspect and unrivalled London views on the top floor. Accommodation comprises of a wonderfully spacious living room/kitchen spanning the full width of the building creating the perfect entertaining space. All three bedrooms are good sizes, two on the second floor with another positioned on the first floor. The bathroom and additional shower room are useful touches, both finished to a high standard. The property would make an excellent home for any end user or long term investment, whilst it is also offered to the market with a share of the freehold.

Petherton Road is located moments from Clissold Park and withing easy reach of the many restaurants, pubs and shops on the vibrant Stoke Newington Church Street. Canonbury overground offers the closest overground links whilst Highbury and Islington underground station provides the closest underground links on the Victoria Line. Numerous bus routes provide easy access to the City and West End.

Winkworth

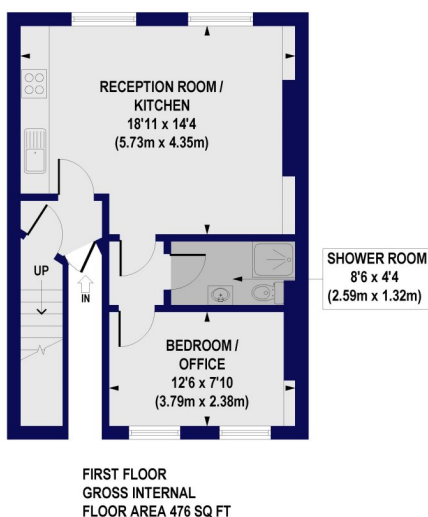
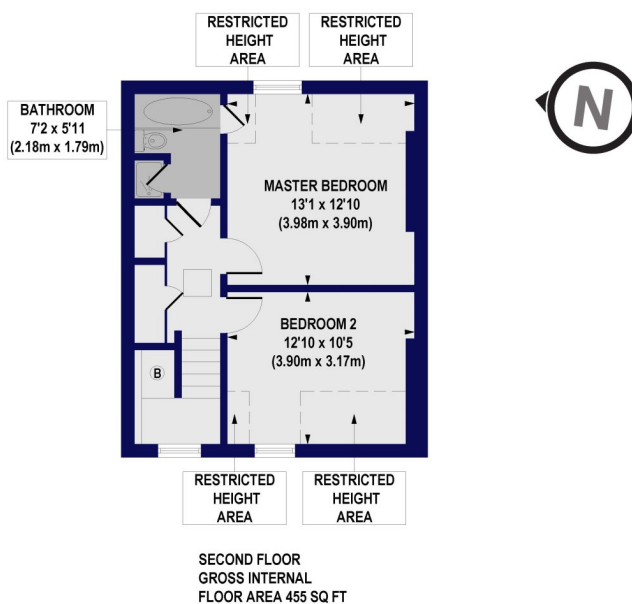


Winkworth

Petherton Road, N5

Approx. Gross Internal Floor Area 931 sq. ft / 86.43 sq. m (Including Restricted Height Area)

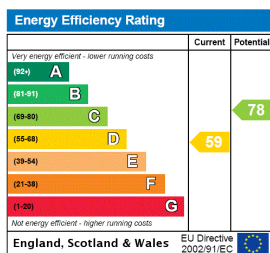
Approx. Gross Internal Floor Area 864 sq. ft / 80.23 sq. m (Excluding Restricted Height Area)



All measurements of walls, doors, windows, fittings and appliances, including their size and location, are shown as standard sizes and do not constitute any warranty or representation by the seller, their agent or CP Creative. Any intending purchaser must satisfy himself by inspection or otherwise as to the correctness of the information contained in these plans. This plan is for illustrative purposes only and should be used as such by any prospective purchasers.

Winkworth

This floorplan is for illustration purposes only and is not to scale. The position and size of doors, windows, appliances and other features are approximate.



Highbury | 0207 989 7000 | highbury@winkworth.co.uk

Winkworth

winkworth.co.uk

See things differently

Winkworth wishes to inform prospective buyers and tenants that these particulars are a guide and act as information only. All our details are given in good faith and believed to be correct at the time of printing but they don't form part of an offer or contract. No Winkworth employee has authority to make or give any representation or warranty in relation to this property. All fixtures and fittings, whether fitted or not are deemed removable by the vendor unless stated otherwise and room sizes are measured between internal wall surfaces, including furnishings.