



**Berens Road, NW10**

**£640,000** *Leasehold*



A fantastic split level apartment in a great location within Kensal Green, close to amenities and transport links

#### KEY FEATURES

- 1046 SQ.FT
- TWO DOUBLE BEDROOMS
- ROOF TERRACE
- RECENTLY RENOVATED
- CLOSE TO TRANSPORT
- GREAT LOCATION



**Kensal Rise & Queens Park**

0208 960 4947 | [kensalrise@winkworth.co.uk](mailto:kensalrise@winkworth.co.uk)

**Winkworth**

for every step...

Winkworth wishes to inform prospective buyers and tenants that these particulars are a guide and act as information only. All our details are given in good faith and believed to be correct at the time of printing but they don't form part of an offer or contract. No Winkworth employee has authority to make or give any representation or warranty in relation to this property. All fixtures and fittings, whether fitted or not are deemed removable by the vendor unless stated otherwise and room sizes are measured between internal wall surfaces, including furnishings.





## DESCRIPTION

This beautifully presented split-level apartment offers over 1,040 sq.ft of bright and versatile living space across the first and second floors.

Featuring two generously sized double bedrooms including a stunning loft-style principal suite with a modern en-suite shower room this home perfectly balances comfort and style.

The heart of the property is a striking open-plan living area, thoughtfully designed to accommodate relaxing, dining, and entertaining, with ample room for all. A contemporary family bathroom adds to the appeal, while the property's excellent condition throughout means you can move straight in.

Additional highlights include a long lease and no upper chain, making this a fantastic opportunity for both homeowners and investors.







## LOCATION

Berens Road is ideally situated in the southerly part of Kensal Green near Chamberlayne Road and Harrow Road. Kensal Green Tube station is only 400m away (Bakerloo line zone 2) and there is easy access to nights out in Notting Hill via the 52 bus (10mins).

If its local interest there is an array of shops, bars and restaurants on your doorstep including the Paradise by Way of Kensal Green, William IV and a huge Sainsbury's superstore off Ladbroke Grove. If its green spaces you are looking for then Queens Park itself is a short walk away. Highly Recommended.

For more information, scan the QR code or visit the link below

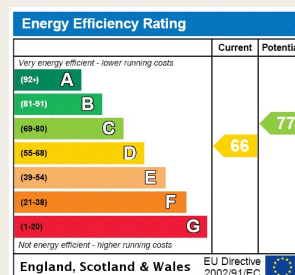


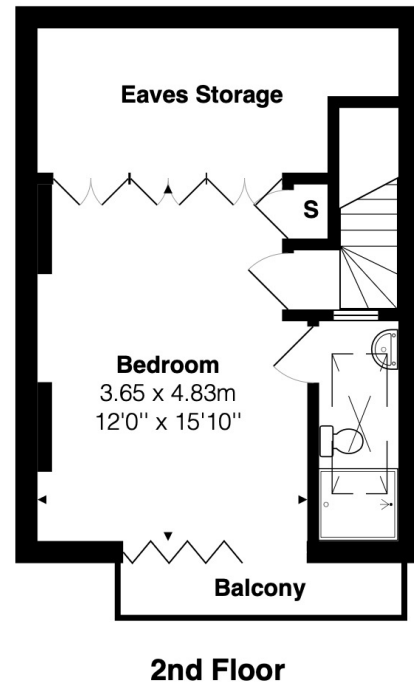
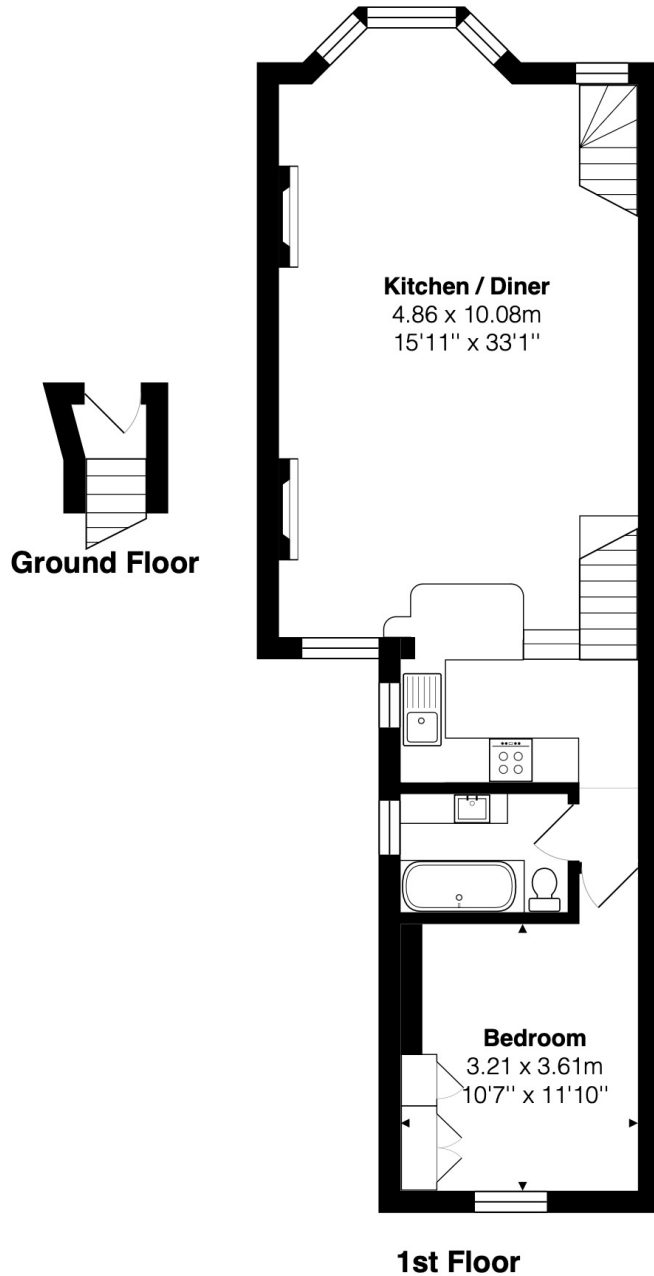
<https://www.winkworth.co.uk/sale/property/KQP240207>

Where no figures are shown, we have been unable to ascertain the information. All figures that are shown were correct at the time of printing.

## MATERIAL INFO

**Tenure:** Leasehold  
**Term:** 92 year and 0 months  
**Service Charge:** Ask Agent  
**Ground Rent:** Ask Agent  
**Council Tax Band:** C  
**EPC rating:** D





Total Area: 97.2 m<sup>2</sup> ... 1046 ft<sup>2</sup> (excluding balcony)  
All measurements are approximate and for display purposes only

Kensal Rise & Queens Park

0208 960 4947 | [kensalrise@winkworth.co.uk](mailto:kensalrise@winkworth.co.uk)

**Winkworth**

for every step...

Winkworth wishes to inform prospective buyers and tenants that these particulars are a guide and act as information only. All our details are given in good faith and believed to be correct at the time of printing but they don't form part of an offer or contract. No Winkworth employee has authority to make or give any representation or warranty in relation to this property. All fixtures and fittings, whether fitted or not are deemed removable by the vendor unless stated otherwise and room sizes are measured between internal wall surfaces, including furnishings.