



**APARTMENT 4, THE APOSTLES, CHURCH RISE, LONDON, SE23**  
**£550,000 LEASEHOLD**

Ideally situated in a sought-after location with excellent transport links and a wide range of local amenities, this home is perfectly suited for first-time buyers or investors seeking a stylish and convenient city base.

**Forest Hill** | | [foresthill@winkworth.co.uk](mailto:foresthill@winkworth.co.uk)





### DESCRIPTION:

This charming ground floor split-level apartment combines classic period features with contemporary style. Boasting 2 well-proportioned bedrooms, a spacious living area, and a sleek modern kitchen, the property offers a perfect blend of character and comfort.







# The Apostle, Church Rise, London, SE23

Approximate Area = 995 sq ft / 92.4 sq m

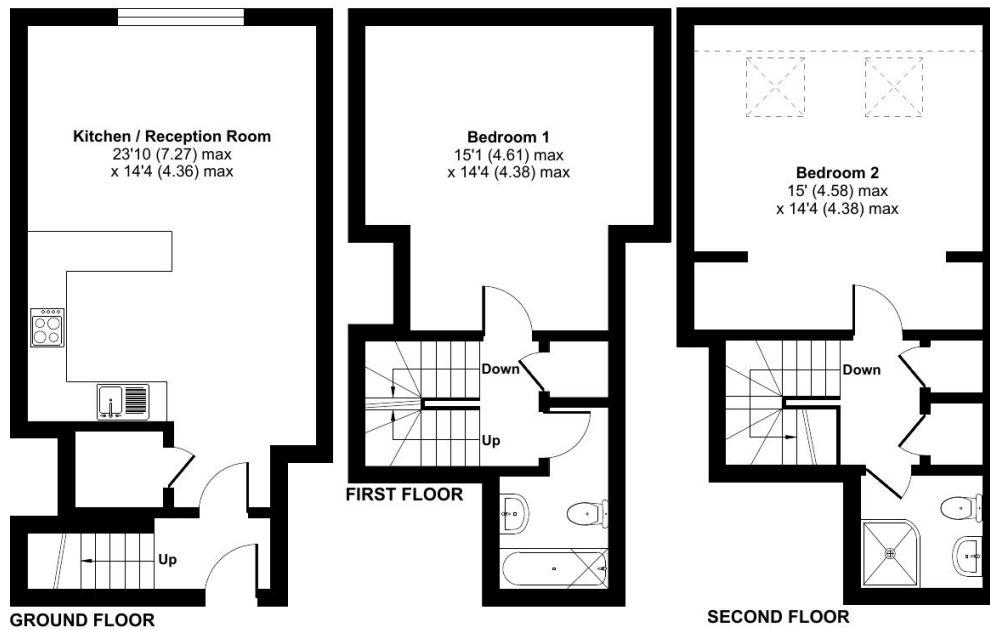
Limited Use Area(s) = 18 sq ft / 1.6 sq m

Total = 1013 sq ft / 94 sq m

For identification only - Not to scale



Denotes restricted  
head height



Floor plan produced in accordance with RICS Property Measurement Standards incorporating International Property Measurement Standards (IPMS2 Residential). © nlcocom 2025.  
Produced for Winkworth Forest Hill and New Cross. REF: 1317661

This floorplan is for illustration purposes only and is not to scale. The position and size of doors, windows, appliances and other features are approximate.

## Tenure: Leasehold

Where no figures are shown, we have been unable to ascertain the information. All figures that are shown were correct at the time of printing.