



**First Floor Flat, 527 Ringwood Rd**  
**Ferndown BH22 9AQ**  
**Guide Price £239,950**

**Winkworth**





**GUIDE PRICE £239,950**  
**LEASEHOLD**

**This rarely available and very spacious two double bedroom split level maisonette (which has excellent scope to be converted into three bedrooms if required) is tucked away in a quiet location just metres from the amenities along Ferndown High Street. The property further benefits from it's own front door, off road parking, a private garden, brand new lease and NO ONWARD CHAIN.**

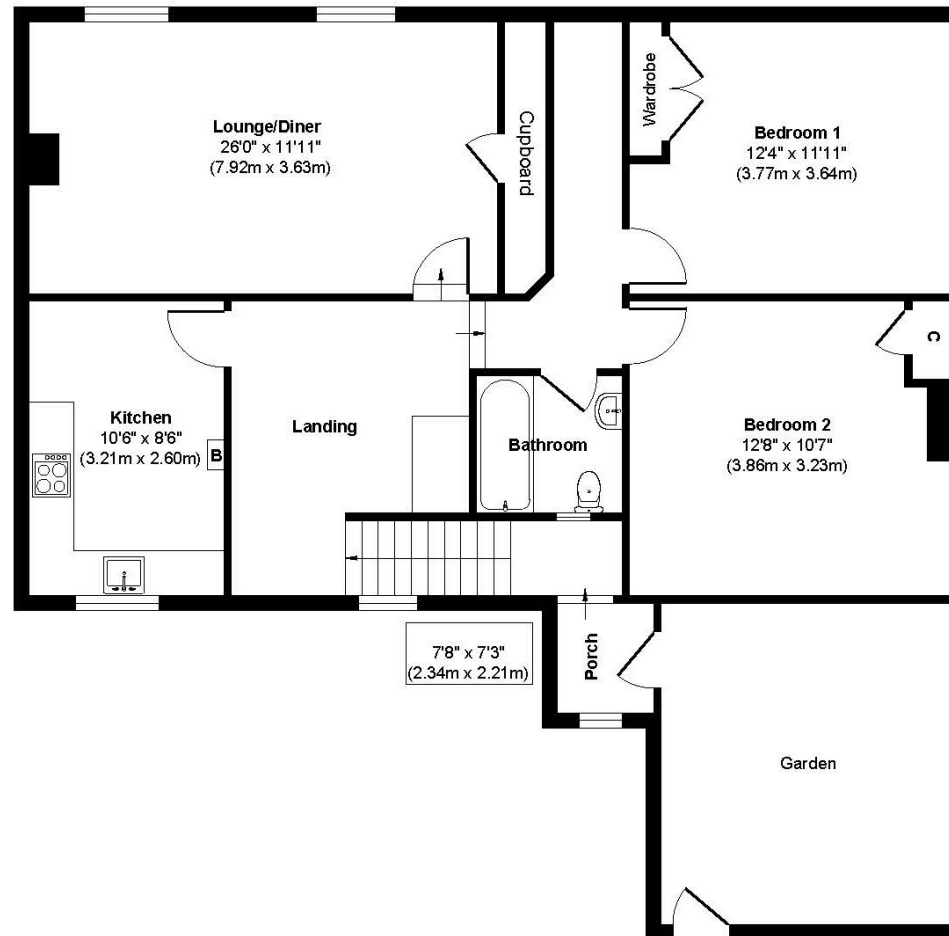
Split Level Maisonette  
Character Features  
Well Maintained Throughout  
Off Road Parking  
Good Storage  
No Onward Chain  
Town Centre Location  
No Ground Rent  
Brand New 125 Year Lease  
Nominal Service Charge

EPC TBC | Council Tax Band B

01202 434365  
ferndown@winkworth.co.uk



## Ringwood Road



**Approx Gross Internal Floor Area 1194 sq. ft / 110.95 sq. m.**

Whilst every attempt has been made to ensure the accuracy of the floorplan shown, all measurements, positioning, fixtures, fittings and any other data shown are an approximate interpretation for illustrative purposes only and are not to scale.