

AUCKLAND ROAD, SE19  
**£1,700 PER MONTH FURNISHED**

## BRIGHT AND SPACIOUS TWO DOUBLE BEDROOM TOP FLOOR FLAT FOR RENT

Crystal Palace | 02038693222 | [crystalpalace@winkworth.co.uk](mailto:crystalpalace@winkworth.co.uk)

**Winkworth**

for every step...

[winkworth.co.uk](https://www.winkworth.co.uk)



## DESCRIPTION:

Winkworth is pleased to offer this well presented two double bedroom flat available for rent on Auckland Road.

Located on the top floor (3rd) of this purpose-built development the property comprises entrance hallway, spacious reception room with space to dine, two good sized double bedrooms both with fitted wardrobes, modern fitted shaker style kitchen, separate WC & bathroom.

The property has been finished to a modern standard throughout and includes a new kitchen & bathroom fitted in the past two years.

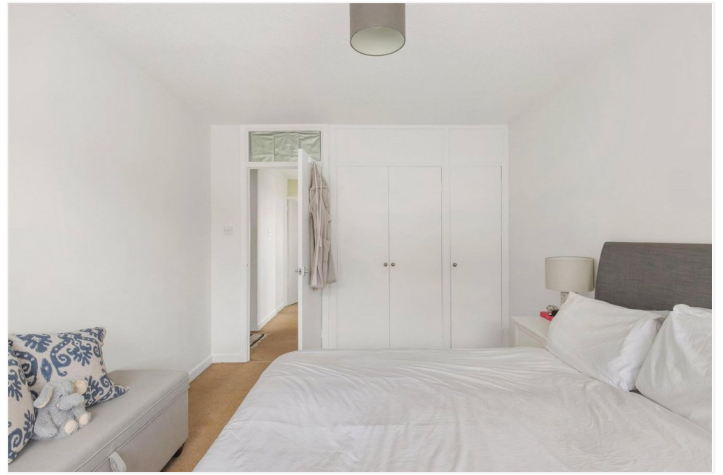
The property is offered furnished & available in early June.

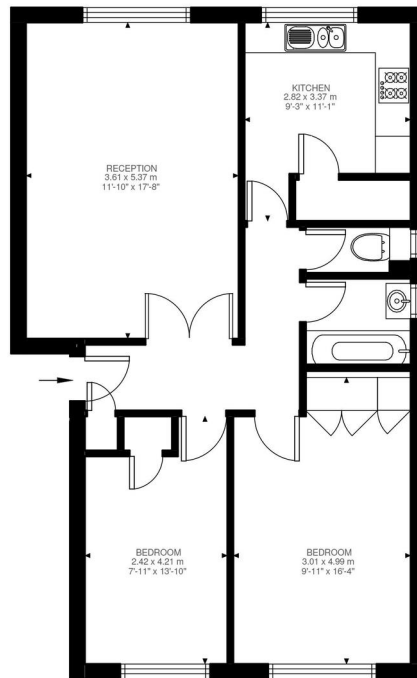
## AT A GLANCE

- Two double bedrooms
- Top floor flat (3rd floor)
- Modern finish throughout
- Furnished
- Available early June
- Holding Deposit: £392.30 (1 week's rent)
- Deposit: £1,961.54 (5 weeks rent)
- Croydon Council Tax Band C









Third Floor  
717 ft²

Auckland Road , SE19  
Approximate Gross Internal Area  
66.62 SQ.M / 717 SQ.FT

Illustration for identification purposes only. Not to scale.  
Floor Plan Drawn According To RICS Guidelines.

This floorplan is for illustration purposes only and is not to scale. The position and size of doors, windows, appliances and other features are approximate.

Score	Energy rating	Current	Potential
92+	A		
81-91	B		
69-80	C		
55-68	D	61 D	68 D
39-54	E		
21-38	F		
1-20	G		

**Deposit: £0.00**

**Holding Deposit:**

**Council Tax Band: C**

Where no figures are shown, we have been unable to ascertain the information. All figures that are shown were correct at the time of printing.

Crystal Palace | 02038693222 | crystalpalace@winkworth.co.uk

**Winkworth**

**for every step...**

**winkworth.co.uk**

Winkworth wishes to inform prospective buyers and tenants that these particulars are a guide and act as information only. All our details are given in good faith and believed to be correct at the time of printing but they don't form part of an offer or contract. No Winkworth employee has authority to make or give any representation or warranty in relation to this property. All fixtures and fittings, whether fitted or not are deemed removable by the vendor unless stated otherwise and room sizes are measured between internal wall surfaces, including furnishings.