



Top Floor Apartment, 1 Vane Street, Bath, Somerset, BA2 4DY  
Asking Price £350,000 , Leasehold

Georgian property | newly refurbished | 2 bedrooms |  
impressive kitchen | stunning views | sought after central  
location.





A stylish apartment with 2 bedrooms and stunning views.

As you enter the property you are struck by bright light and impressive decor.

The entrance hall / dining room has a large skylight flooding the space with natural light, soft grey walls and white woodwork give the space has a lovely feel. All the other rooms lead off this space.

The living room is decorated in similar colours and provides a relaxing space with two sash windows with stunning views of St Marys Church, Bathwick Hill and over Bath Rec towards the city.

The kitchen is newly installed with modern doors and Corian worktops.

The principle bedroom is at the rear of the apartment, again with lovely roof top views.

There is a built in wardrobe/cupboard.

The second bedroom is used as a guest bedroom and study.

Vane Street is situated between Great Pulteney Street and Bathwick Hi

Tenure: Leasehold

Service charge: £100pcm

Lease length: 976 remaining

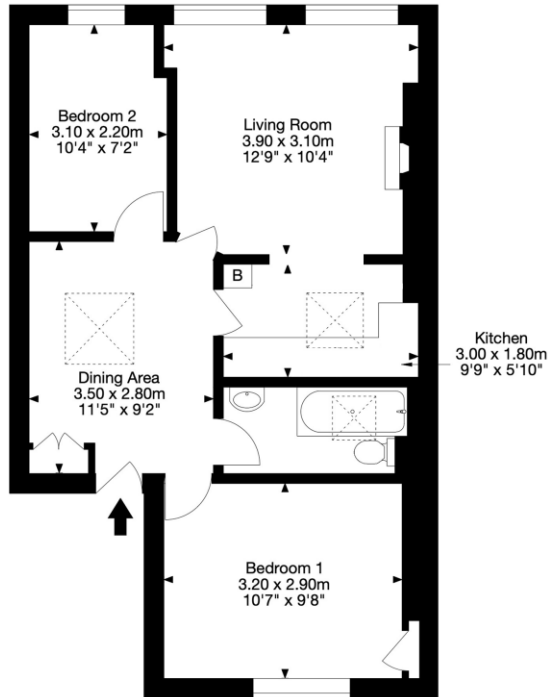
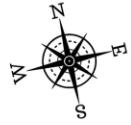
Council tax: C

Residents parking (zone 1) 2 permits available

Postcode BA2 4DY



Top Floor Flat, 1 Vane Street, Bath BA2 4DY  
Gross Internal Area (Approx.)  
506 sq m / 47 sq ft



Capture Property Marketing 2023. Drawn to RICS guidelines.  
All Measurements are approximate and should not be relied on as a statement of fact.  
Plan is for illustration purposes only. Not drawn to scale.

Capture.

NOTICE: Whilst every effort has been made to ensure the accuracy of these sales details, they are for guidance purposes only and prospective purchasers are advised to seek their own professional advice as well as to satisfy themselves by inspection or otherwise as to their correctness. No representation or warranty whatsoever is made in relation to this property by Winkworth or its employees nor do such sales details form part of any offer or contract.

Bath | 01225 829 000 | bath@winkworth.co.uk

winkworth.co.uk