



FINCH LODGE, LONDON, W9
£499,950 LEASEHOLD

ONE BEDROOM FLAT IN A MODERN DEVELOPMENT

North Kensington | 020 7792 5000 | northkensington@winkworth.co.uk

Winkworth

for every step...

winkworth.co.uk



DESCRIPTION:

A spacious one bedroom apartment situated on the fourth floor of a luxury development in W9 offering great views past the Grand Union Canal and across London.

Offering an impressive 635 Sq Foot of internal space, this spacious one bedroom flat is offered on a furnished or unfurnished basis and comprises of a large reception that leads on to a private balcony, spacious bedroom, modern kitchen and gorgeous shower room.

Additional benefits include allocated off street parking, 24 hour porter service ,access to communal gardens and two free memberships to the Harbour Club.

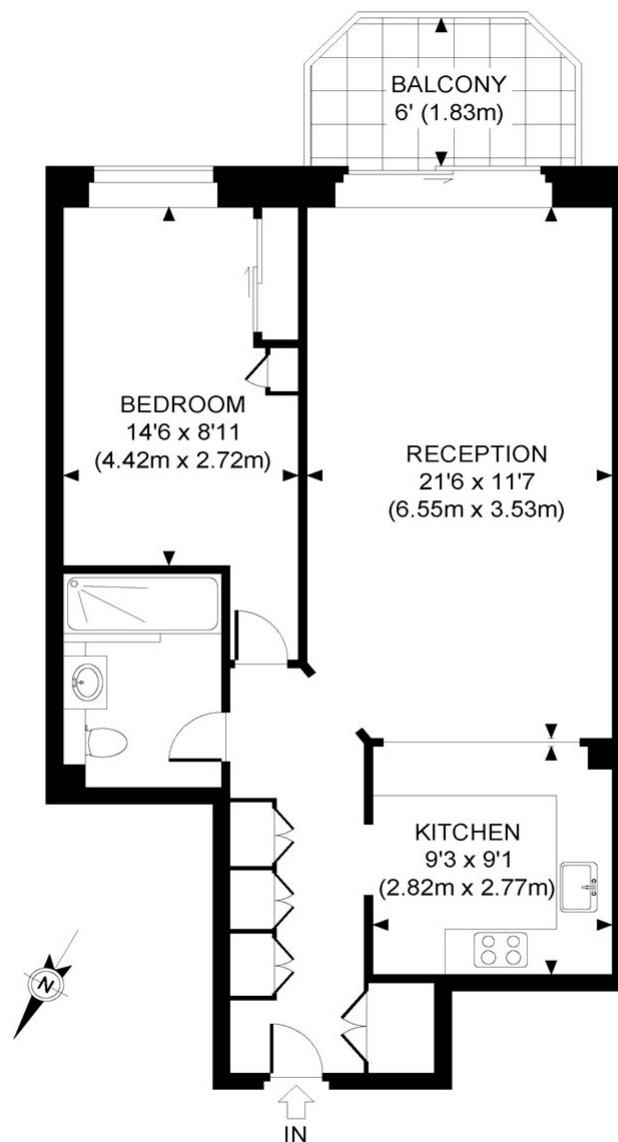
AT A GLANCE

- 1 Bedroom
- Reception Room
- Kitchen Dining Room
- Bathroom
- Roof Terrace
- Gym- two free memberships
- EPC Raing C





Finch Lodge, W9



FOURTH FLOOR

APPROXIMATE GROSS INTERNAL AREA 651 SQ FT / 60.5 SQ M

Whilst every attempt has been made to ensure the accuracy of this floor plan; measurements of door, windows, rooms and all other items are approximate. No responsibility is taken for any error, omission or mis-statement. This floor plan is for illustrative purposes only, and should be treated as such.

This floorplan is for illustration purposes only and is not to scale. The position and size of doors, windows, appliances and other features are approximate.

Energy Efficiency Rating		
	Current	Potential
Very energy efficient - lower running costs		
(92+) A		
(81-91) B		
(69-80) C	78	83
(55-68) D		
(39-54) E		
(21-38) F		
(1-20) G		
Not energy efficient - higher running costs		
England, Scotland & Wales EU Directive 2002/91/EC		

Tenure: Leasehold

Term: TBC

Service Charge: TBC

Ground Rent: TNC

Council Tax Band: F

Where no figures are shown, we have been unable to ascertain the information. All figures that are shown were correct at the time of printing.

North Kensington | 020 7792 5000 | northkensington@winkworth.co.uk

Winkworth

for every step...

winkworth.co.uk

Winkworth wishes to inform prospective buyers and tenants that these particulars are a guide and act as information only. All our details are given in good faith and believed to be correct at the time of printing but they don't form part of an offer or contract. No Winkworth employee has authority to make or give any representation or warranty in relation to this property. All fixtures and fittings, whether fitted or not are deemed removable by the vendor unless stated otherwise and room sizes are measured between internal wall surfaces, including furnishings.