



RIVERVIEW COURT, BATH, BA1
£210,000 LEASEHOLD



RIVERVIEW COURT, BATH, BA1

A second floor 1 bedroom apartment in sought after development. Lift. Build in 2019.

***DISCOUNTED MARKET SCHEME - RESTRICTIONS ON PURCHASER.**

A one bedroom apartment, built in 2019 to a high specification including underfloor heating, high spec bathrooms and fully fitted kitchen.

Communal entrance hall | entrance hall | kitchen and living room | bedroom | bathroom. Approx. 46.3sq M.

One of 44 apartments in River View Court on Baths Riverside with a cafe on the ground floor coming soon.

A short walk to Bath city centre and across the road from Royal Victoria Park.

High specification, underfloor heating throughout, fully fitted kitchen with built in appliances and bathroom with Porcelanosa floor and wall tiles and Villeroy and Boch sanitary ware.

Bike store, well-kept communal areas, bin store, fob entrance system and video entry system.

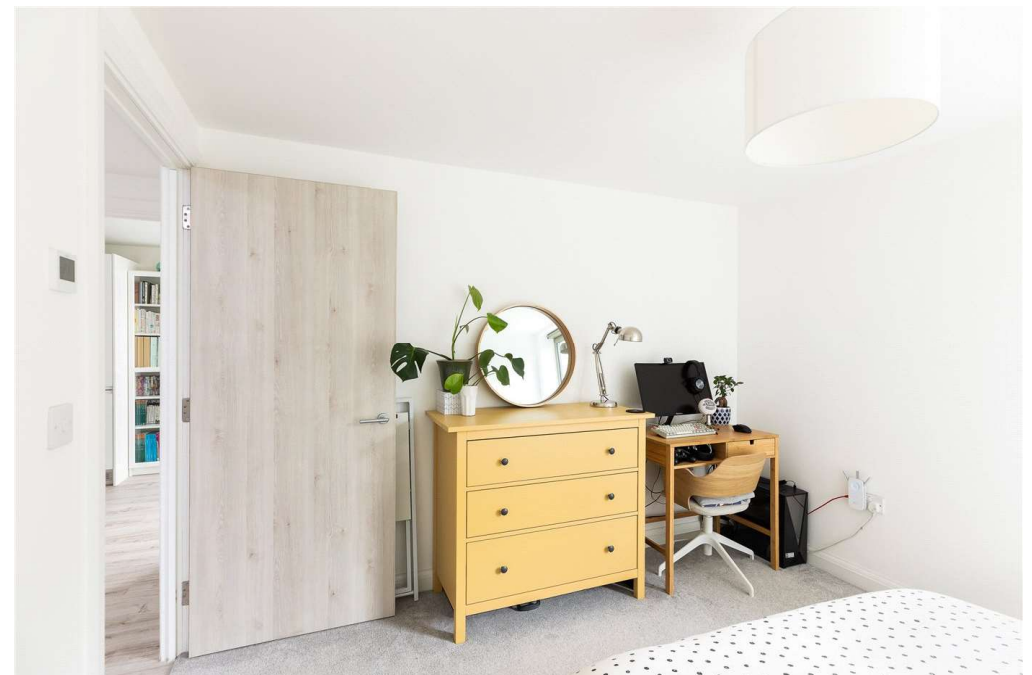
Leasehold: Remaining of 999 year.

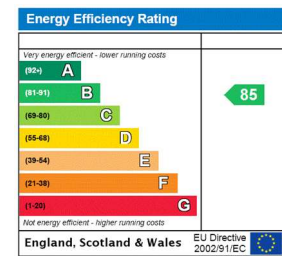
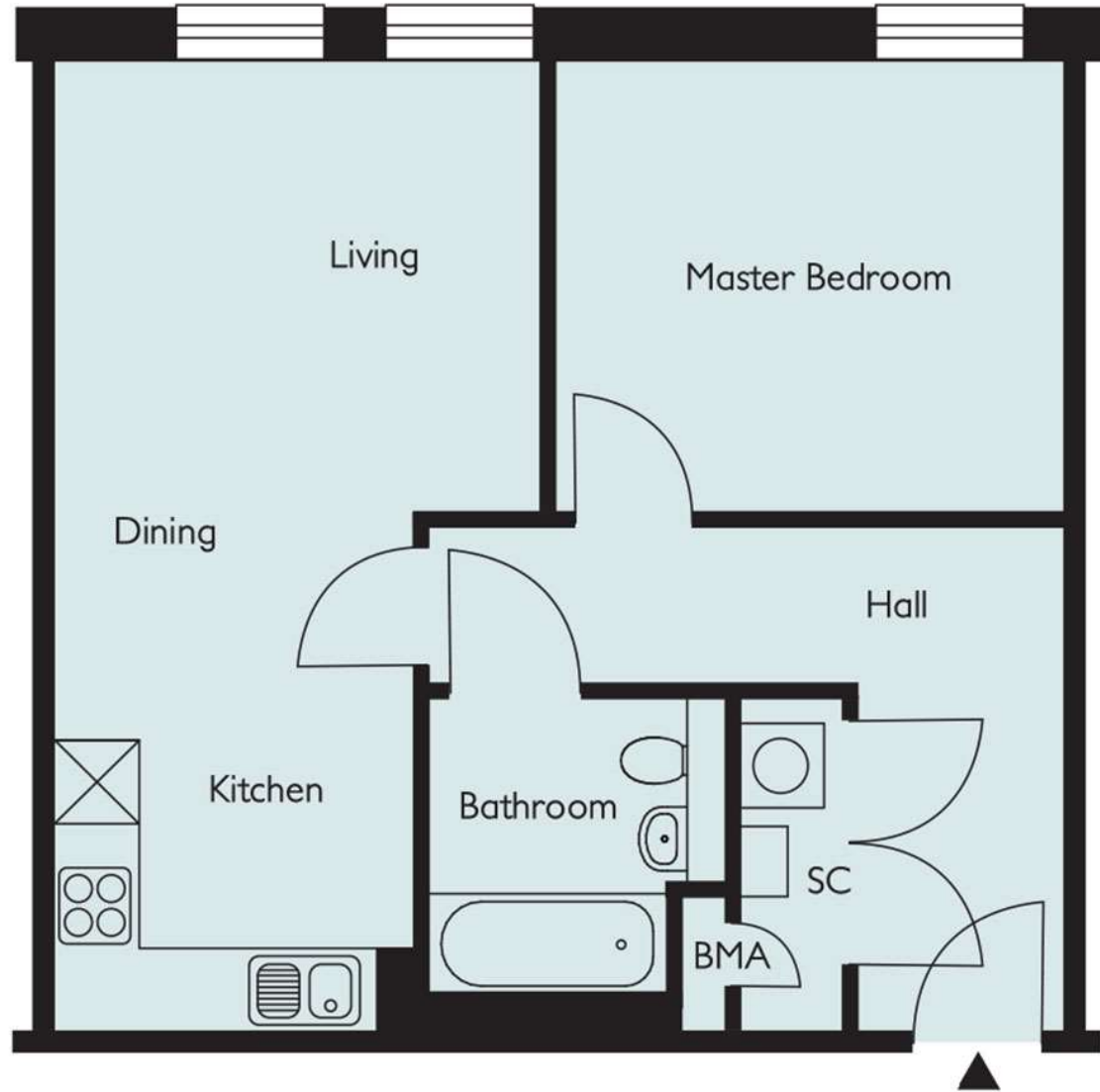
Council tax: £1,372pa 2020.

Service Charge: £1,380pa

No parking or residents parking available. Visitors parking.







Bath | 01225 829 000 | bath@winkworth.co.uk

winkworth.co.uk

Winkworth wishes to inform prospective buyers and tenants that these particulars are a guide and act as information only. All our details are given in good faith and believed to be correct at the time of printing but they don't form part of an offer or contract. No Winkworth employee has authority to make or give any representation or warranty in relation to this property. All fixtures and fittings, whether fitted or not are deemed removable by the vendor unless stated otherwise and room sizes are measured between internal wall surfaces, including furnishings.

