



CAVERSHAM WHARF, READING, BERKSHIRE, RG1 8DS
£2,250 PER MONTH FURNISHED

A SPACIOUS FIRST FLOOR THREE BEDROOM APARTMENT OVERLOOKING THE RIVER THAMES

Reading | 0118 4022 300 | reading@winkworth.co.uk

Winkworth

for every step...

winkworth.co.uk



DESCRIPTION:

A spacious first floor three bedroom apartment overlooking the River Thames, a short walk from Reading town centre and Caversham. The property comprises open plan lounge/diner with a generous balcony overlooking the River Thames, separate kitchen, three bedrooms with fitted wardrobes, an en suite shower room to the master bedroom and a further three piece bathroom. Residents parking available along with a garage. Available 8th September 2025. Furnished.

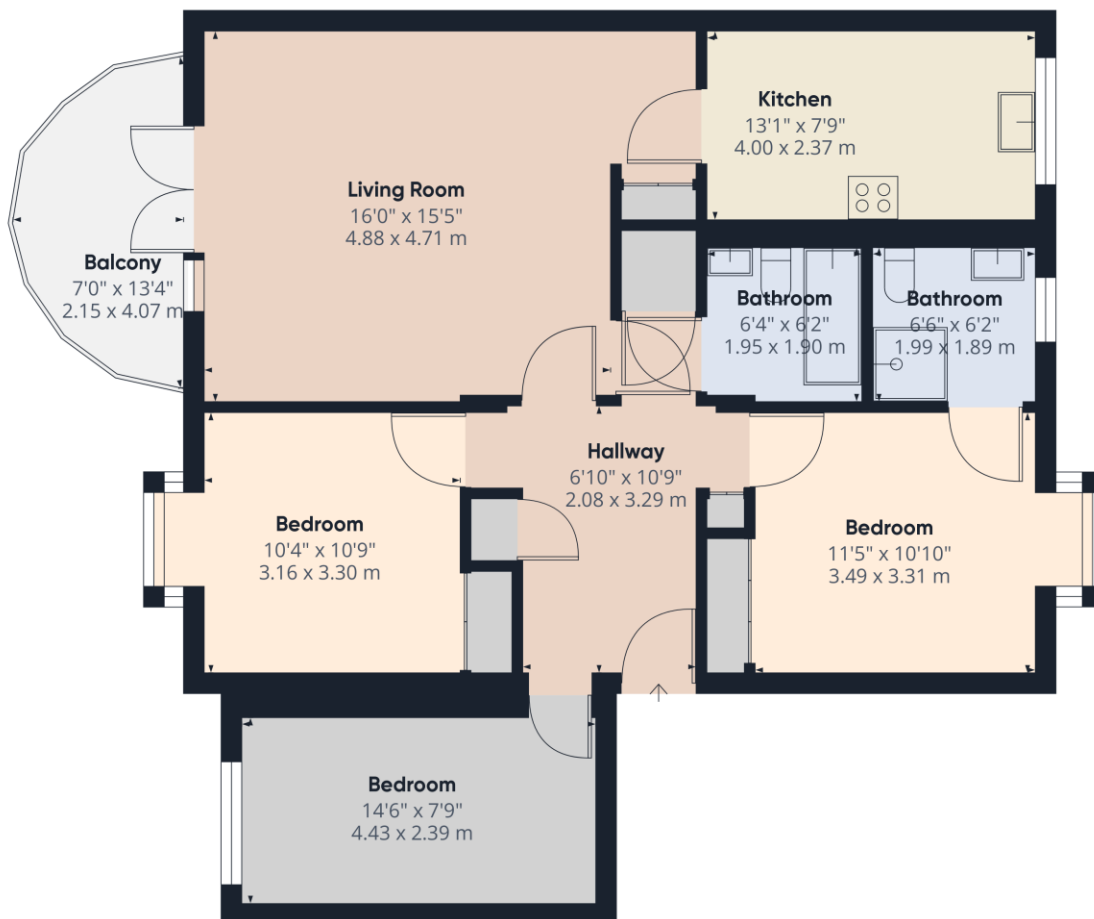
AT A GLANCE

- Overlooks the River Thames
- Three Bedrooms
- Large private balcony
- Residents parking & garage
- Council Tax Band F
- Available 8th September
- Furnished









Approximate total area⁽¹⁾
971.38 ft²
90.24 m²

(1) Excluding balconies and terraces

While every attempt has been made to ensure accuracy, all measurements are approximate, not to scale. This floor plan is for illustrative purposes only.

GIRAFFE360

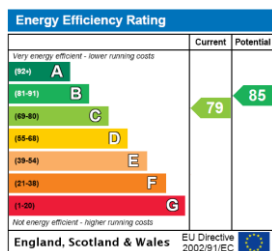
This floorplan is for illustration purposes only and is not to scale. The position and size of doors, windows, appliances and other features are approximate.

Deposit: £2,596.15

Holding Deposit: £519.23

Council Tax Band: F

Where no figures are shown, we have been unable to ascertain the information. All figures that are shown were correct at the time of printing.



Reading | 0118 4022 300 | reading@winkworth.co.uk

Winkworth

for every step...

winkworth.co.uk

Winkworth wishes to inform prospective buyers and tenants that these particulars are a guide and act as information only. All our details are given in good faith and believed to be correct at the time of printing but they don't form part of an offer or contract. No Winkworth employee has authority to make or give any representation or warranty in relation to this property. All fixtures and fittings, whether fitted or not are deemed removable by the vendor unless stated otherwise and room sizes are measured between internal wall surfaces, including furnishings.