



SHORTS CROFT, KINGSBURY, LONDON, NW9
£580,000 FREEHOLD

BEAUTIFUL TWO BEDROOM END OF TERRACE HOME

Kingsbury | 020 8204 0000 | kingsbury@winkworth.co.uk

Winkworth

for every step...

winkworth.co.uk



Your perfect sanctuary awaits within the walls of this stunning two-bedroom end of terrace home. Nestled in a tranquil neighborhood, this property exudes warmth and comfort with its cosy and homely ambiance, adorned in neutral tones throughout. Graced by a fresh and airy lounge, inviting you to unwind and relax after a long day, alongside a simplistic yet stylish kitchen on the ground floor. Whilst the upper level is complimented by two double bedrooms, offering ample space for rest and rejuvenation, as well as a modern family bathroom providing convenience and luxury for everyday living. Externally, a well-sized rear garden awaits, surrounded by lush greenery, creating a serene outdoor oasis perfect for entertaining guests or enjoying peaceful moments in nature. Additionally, off-street parking to the front ensures convenience and ease for residents. Situated within the catchment area for excellent schools, amenities, and transport links, this property is not just a house, but a home ideal for a small family seeking comfort, convenience, and a sense of community. Don't miss the opportunity to make this your own haven of happiness.



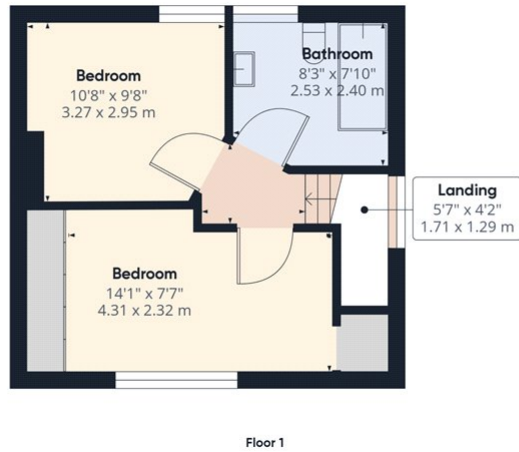
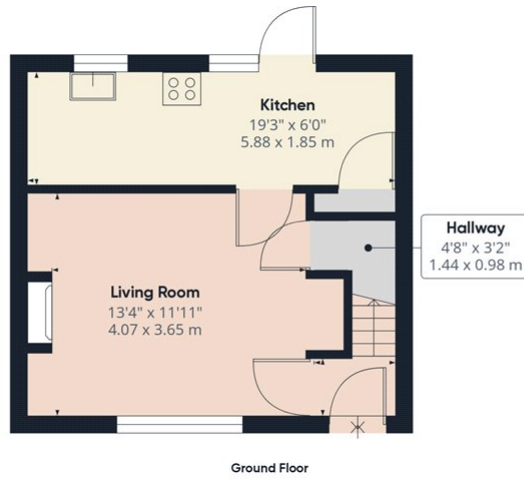
Winkworth

for every step...



Winkworth

for every step...



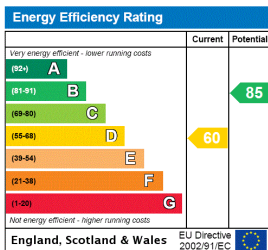
Approximate total area⁽¹⁾
 670.68 ft²
 62.31 m²

(1) Excluding balconies and terraces

While every attempt has been made to ensure accuracy, all measurements are approximate, not to scale. This floor plan is for illustrative purposes only.

GIRAFFE360

This floorplan is for illustration purposes only and is not to scale. The position and size of doors, windows, appliances and other features are approximate.



Tenure: Freehold

Council Tax Band: D

Where no figures are shown, we have been unable to ascertain the information. All figures that are shown were correct at the time of printing.

Kingsbury | 020 8204 0000 | kingsbury@winkworth.co.uk



for every step...

winkworth.co.uk

Winkworth wishes to inform prospective buyers and tenants that these particulars are a guide and act as information only. All our details are given in good faith and believed to be correct at the time of printing but they don't form part of an offer or contract. No Winkworth employee has authority to make or give any representation or warranty in relation to this property. All fixtures and fittings, whether fitted or not are deemed removable by the vendor unless stated otherwise and room sizes are measured between internal wall surfaces, including furnishings.