



Winkworth



Winkworth



Winkworth

NETHER STREET, LONDON, N3  
**£450,000 SHARE OF FREEHOLD**

**A WELL PRESENTED, TWO BEDROOM, FIRST FLOOR MAISONETTE, WITH GARDEN, SET IN AN IDEAL LOCATION.**

Finchley | 020 8349 3388 | [finchley@winkworth.co.uk](mailto:finchley@winkworth.co.uk)

**Winkworth**

for every step...

[winkworth.co.uk](http://winkworth.co.uk)



## DESCRIPTION:

We are pleased to offer this first floor, two bedroom maisonette, located between Finchley Central and West Finchley, offering very good transport links and positioned close to a large array of shops, excellent local schools and recreational outdoor spaces.

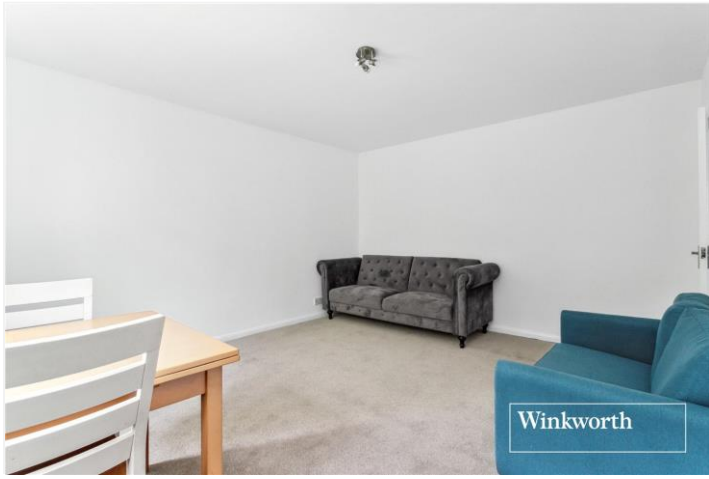
The property comprises two double bedrooms, spacious reception area, fitted kitchen, fitted bathroom and separate WC. Further benefits include a garden, loft storage and a share of the freehold.

The property is being offered on a chain free basis.

## AT A GLANCE

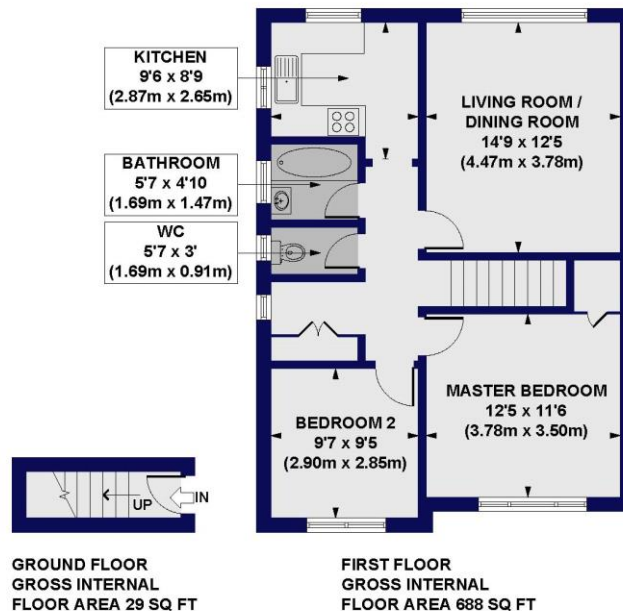
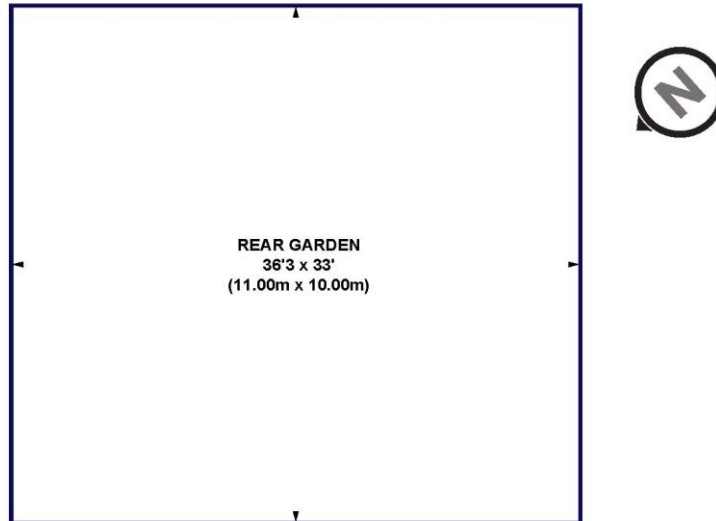
- First floor
- Spacious reception room
- Kitchen
- Bathroom & separate WC
- Two double bedrooms
- Loft storage
- Private garden
- Share of freehold
- Chain free





## Nether Street, N3

Approx. Gross Internal Floor Area 717 sq.ft / 66.64 sq. m



All measurements of walls, doors, windows, fittings and appliances, including their size and location, are shown as standard sizes and do not constitute any warranty or representation by the seller, their agent or CP Creative. Any intending purchaser must satisfy himself by inspection or otherwise as to the correctness of the information contained in these plans. This plan is for illustrative purposes only and should be used as such by any prospective purchasers.

**Winkworth**

This floorplan is for illustration purposes only and is not to scale. The position and size of doors, windows, appliances and other features are approximate.

Score	Energy rating	Current	Potential
92+	A		
81-91	B		
69-80	C		
55-68	D	64 D	74 C
39-54	E		
21-38	F		
1-20	G		

**Tenure:** Share of Freehold

**Council Tax Band:** D

Where no figures are shown, we have been unable to ascertain the information. All figures that are shown were correct at the time of printing.

**Winkworth**

for every step...

Finchley | 020 8349 3388 | finchley@winkworth.co.uk

[winkworth.co.uk](http://winkworth.co.uk)

Winkworth wishes to inform prospective buyers and tenants that these particulars are a guide and act as information only. All our details are given in good faith and believed to be correct at the time of printing but they don't form part of an offer or contract. No Winkworth employee has authority to make or give any representation or warranty in relation to this property. All fixtures and fittings, whether fitted or not are deemed removable by the vendor unless stated otherwise and room sizes are measured between internal wall surfaces, including furnishings.