



BRECHIN COURT, READING, BERKSHIRE, RG1 5DH  
**£1,050 PER MONTH FURNISHED**

**THIS SPACIOUS ONE BEDROOM FIRST FLOOR  
APARTMENT IS SET ON A POPULAR TREE-  
LINED ROAD OF EAST READING.**

Reading | 0118 4022 300 | [reading@winkworth.co.uk](mailto:reading@winkworth.co.uk)

**Winkworth**

for every step...

[winkworth.co.uk](http://winkworth.co.uk)





### DESCRIPTION:

This spacious one bedroom first floor apartment is set on a popular tree-lined road of East Reading, within easy reach of the station, The Oracle Shopping complex and local amenities. Accommodation comprises one double bedroom, reception room which opens into the kitchen and a three piece bathroom. The apartment has access to well-maintained communal grounds with established shrubs. Available 28th May 2025. Furnished.

### AT A GLANCE

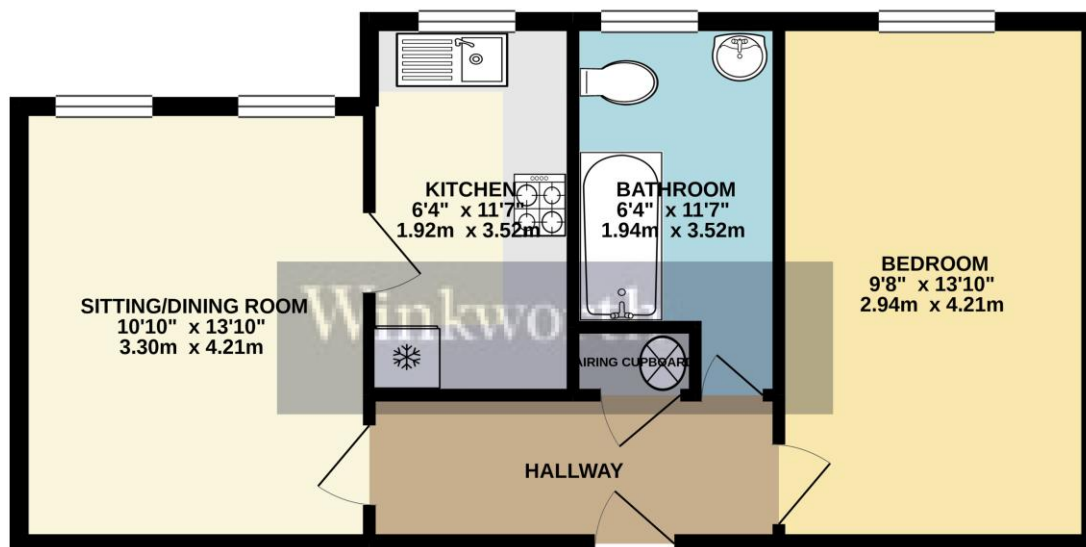
- One bedroom apartment
- First floor
- Within Walking Distance of Reading Station
- No parking
- Council Tax Band B
- Available 28th May
- Furnished





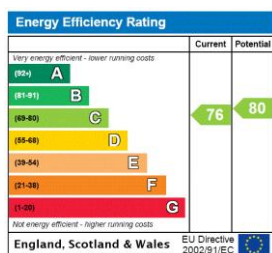


# FIRST FLOOR 506 sq.ft. (47.1 sq.m.) approx.



TOTAL FLOOR AREA : 506 sq.ft. (47.1 sq.m.) approx.  
Whilst every attempt has been made to ensure the accuracy of the floorplan contained here, measurements of doors, windows, rooms and any other items are approximate and no responsibility is taken for any error, omission or mis-statement. This plan is for illustrative purposes only and should be used as such by any prospective purchaser. The services, systems and appliances shown have not been tested and no guarantee as to their operability or efficiency can be given.  
Made with Metropix ©2021

This floorplan is for illustration purposes only and is not to scale. The position and size of doors, windows, appliances and other features are approximate.



**Deposit:** £1,211.54

**Holding Deposit:** £242.30

**Council Tax Band:** B

Where no figures are shown, we have been unable to ascertain the information. All figures that are shown were correct at the time of printing.

Reading | 0118 4022 300 | [reading@winkworth.co.uk](mailto:reading@winkworth.co.uk)

**Winkworth**  
for every step...

[winkworth.co.uk](http://winkworth.co.uk)

Winkworth wishes to inform prospective buyers and tenants that these particulars are a guide and act as information only. All our details are given in good faith and believed to be correct at the time of printing but they don't form part of an offer or contract. No Winkworth employee has authority to make or give any representation or warranty in relation to this property. All fixtures and fittings, whether fitted or not are deemed removable by the vendor unless stated otherwise and room sizes are measured between internal wall surfaces, including furnishings.