



WARWICK WAY, UK, SW1V

£1,195,000

SHARE OF FREEHOLD

At a glance...

- Four Double Bedrooms
- Two Bathrooms
- Open Plan Reception
- Large Roof Terrace
- Own Front Door
- Tenanted until June 2024

Winkworth

for every step...



Energy Efficiency Rating		
	Current	Potential
Very energy efficient - lower running costs		
(92+) A		
(81-91) B		
(69-80) C		79
(55-68) D	68	
(39-54) E		
(21-38) F		
(1-20) G		
Not energy efficient - higher running costs		
England, Scotland & Wales	EU Directive 2002/91/EC	

WARWICK WAY, UK, SW1V

£1,195,000

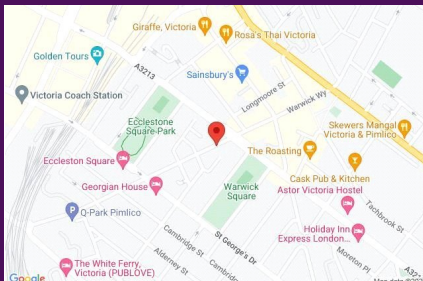
SHARE OF FREEHOLD

A well-presented and incredibly spacious, four double bedroom split level apartment ideally located moments from the cafes, bars and restaurants of Pimlico and Victoria.

Accommodation is neatly arranged over three floors and briefly comprises a magnificent open plan reception with modern fitted kitchen, four double bedrooms and two bathrooms. Further benefits include its own private entrance and a superb private roof terrace.

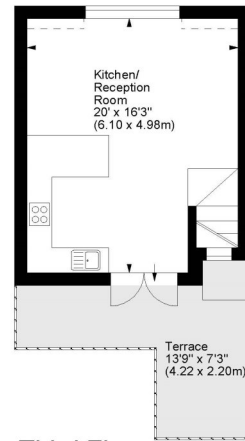
Warwick Way is located in the heart of Pimlico, convenient for the many local amenities, the green open spaces of St George's Square and the extensive transport links on the doorstep.

N.B - This property is currently rented out until June 2024 on an AST contract for £3950pcm.

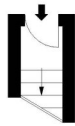


Warwick Way, SW1

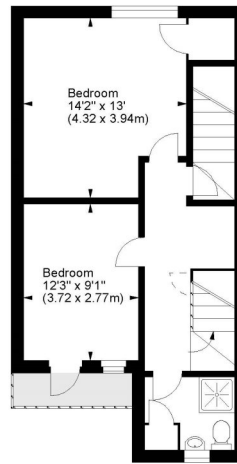
Approx. Gross Internal Area
1338 Sq Ft - 124.30 Sq M



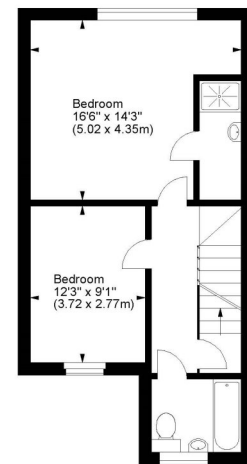
Third Floor



Ground Floor Entrance



First Floor



Second Floor

For illustration purposes only. Not to scale.
All measurements are taken and shown at floor level.
www.r3photography.co.uk © Photography / Floor Plans / Lease Plans / EPCs



Pimlico & Westminster

020 7828 1786

pimlico@winkworth.co.uk

winkworth.co.uk/pimlico-westminster

Winkworth

for every step...

winkworth wishes to inform prospective buyers and tenants that these particulars are a guide and act as information only. All our details are given in good faith and believed to be correct at the time of printing but they don't form part of an offer or contract. No Winkworth employee has authority to make or give any representation or warranty in relation to this property. All fixtures and fittings, whether fitted or not are deemed removable by the vendor unless stated otherwise and room sizes are measured between internal wall surfaces - including fire-chimneys.