



CLIFFORD COURT, LONDON, W2

OIEO £500,000 SHARE OF FREEHOLD (957 YEARS REMAINING)

A BEAUTIFULLY REFURBISHED, TO AN INCREDIBLY STANDARD, ONE BEDROOM FLAT WITH VIEWS OVER THE PRIVATE KENSINGTON GARDENS SQUARE COMMUNAL GARDENS.

1 Bedroom, 1 Reception Room, 1 Bathroom, Flat/Apartment, Upper Floor with Lift, Communal Gardens, Very Good decoration, 291 Approx Sq Ft, Service Charge £2,880 p/a, Ground Rent N/A

Winkworth

Notting Hill Sales | 0207 727 3227 | nottinghill@winkworth.co.uk

winkworth.co.uk

for every step...



DESCRIPTION:

This immaculately presented apartment has just undergone an extensive refurbishment throughout. The accommodation comprises; large open-plan kitchen/dining/reception room, bedroom and a shower room. Particular features of the apartment are wonderful limed oak floors, large gloss marble style tiles, brand new fitted kitchen with stone work top and splashback and three large circle top windows providing excellent views over the communal gardens. The building comes with a lift and the right to apply for access to the private Kensington Gardens Square communal Gardens.

LOCATION:

Kensington Gardens Square is an impressive garden square, running south from Westbourne Grove with its many shops and restaurants, and just to the east Queensway with its many amenities and transport links and current extensive regeneration programme.

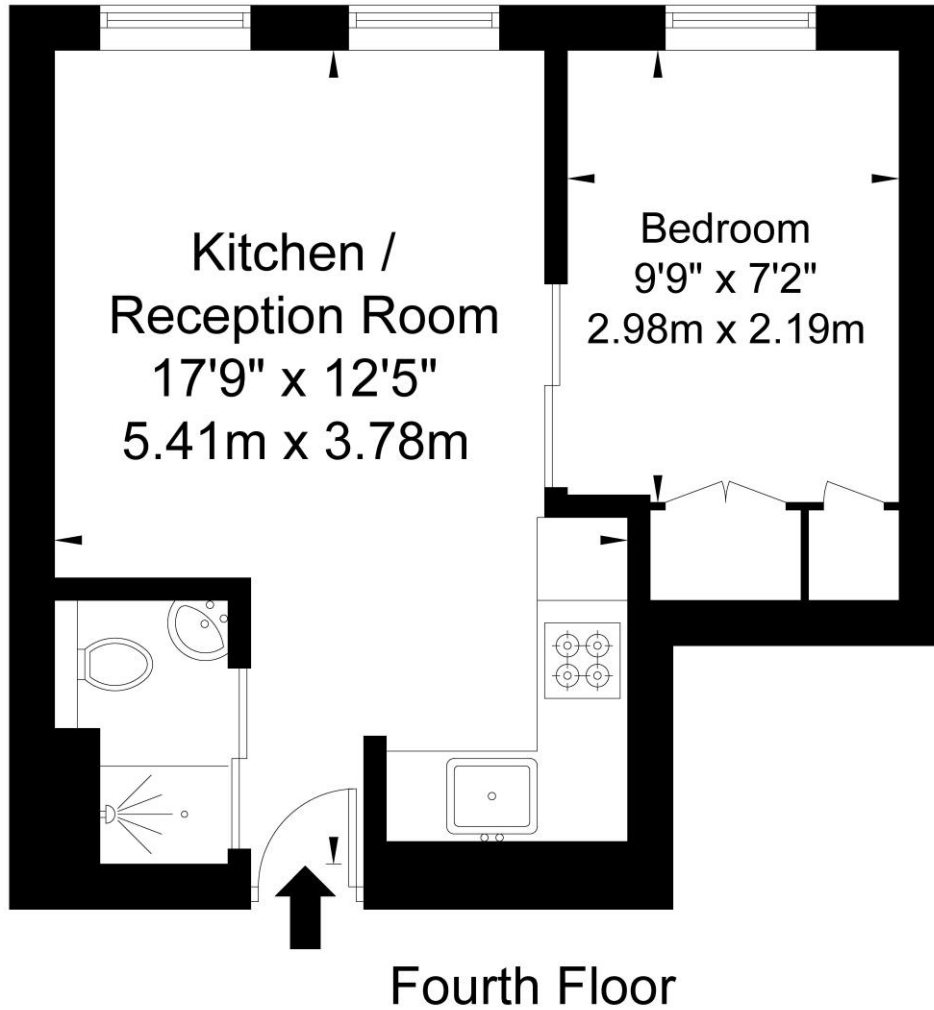
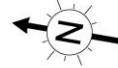
LOCAL AUTHORITY AND COUNCIL TAX BAND:

City of Westminster (Band C)



Clifford Court, Kensington Gardens Square, W2 4BE

Approx Gross Internal Area = 27.1 sq m / 291 sq ft

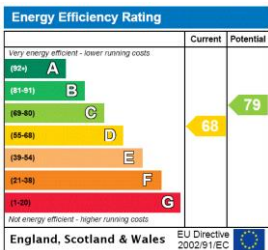


Ref

Copyright **BLEU PLAN**

The Floor plan is not to scale and measurements and areas shown are approximate and therefore should be used for illustrative purposes only. The plan has been prepared in accordance with the RICS code of Measuring Practice and whilst we have confidence in the information produced it must not be relied on. If there is any aspect of particular importance, you should carry out or commission your own inspection of the property.
Copyright @ BLEUPLAN

This floorplan is for illustration purposes only and is not to scale. The position and size of doors, windows, appliances and other features are approximate.



Notting Hill Sales | 0207 727 3227 | nottinghill@winkworth.co.uk



winkworth.co.uk

for every step...

winkworth wishes to inform prospective buyers and tenants that these particulars are a guide and act as information only. All our details are given in good faith and believed to be correct at the time of printing but they don't form part of an offer or contract. No Winkworth employee has authority to make or give any representation or warranty in relation to this property. All fixtures and fittings, whether fitted or not are deemed removable by the vendor unless stated otherwise and room sizes are measured between internal wall surfaces, including furnishings.