



MONTAGU HOUSE, READING, BERKSHIRE, RG2 0PY  
**£1,595 PER MONTH FURNISHED**

## TWO BEDROOM FURNISHED APARTMENT WITHIN THE POPULAR KENNET ISLAND DEVELOPMENT

Reading | 0118 4022 300 | [reading@winkworth.co.uk](mailto:reading@winkworth.co.uk)

**Winkworth**

for every step...

[winkworth.co.uk](http://winkworth.co.uk)





## DESCRIPTION:

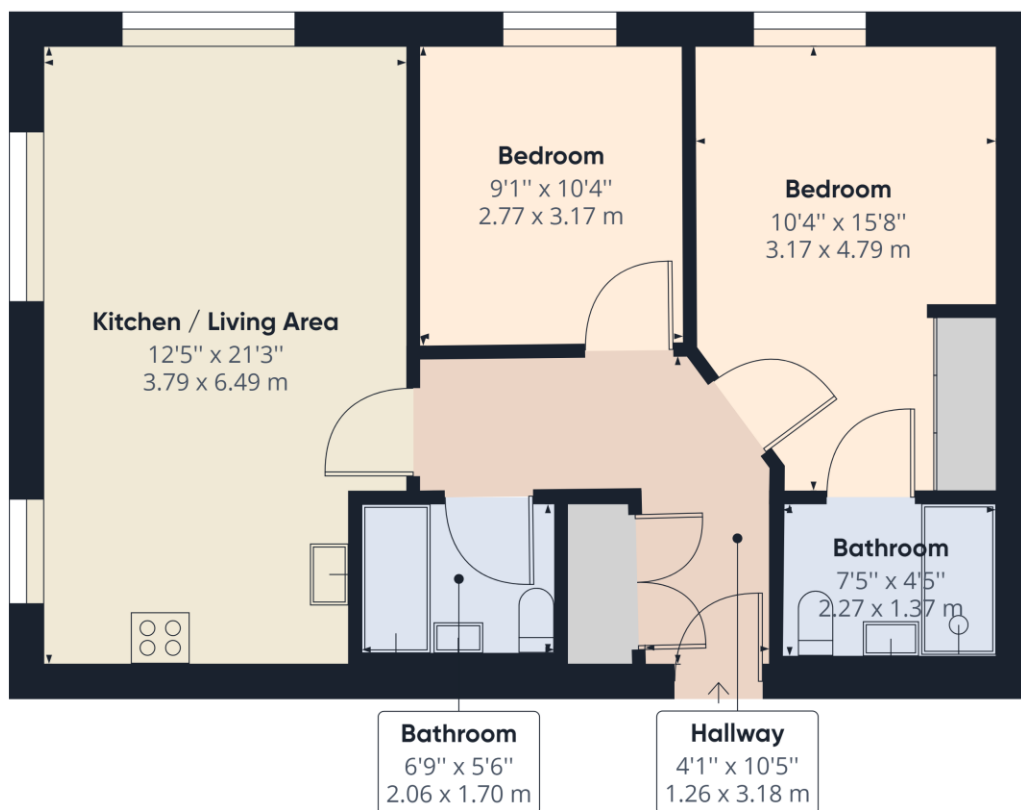
Modern fifth floor apartment (with lift access) located within the popular Kennet Island development. Conveniently located close to junction 11 of the M4 and Green Park and offering excellent access in to Reading Town Centre with regular bus services and cycle routes. The property comprises open plan living room / kitchen, two double bedrooms, en suite shower room off of the master bedroom and a three piece bathroom. The apartment further benefits from an allocated parking space. Available now. Furnished.

## AT A GLANCE

- Two bedroom apartment
- Fifth floor
- Two bathrooms
- Council tax band C
- Allocated parking space
- Available now
- Furnished







**Approximate total area<sup>(1)</sup>**  
680.27 ft<sup>2</sup>  
63.20 m<sup>2</sup>

(1) Excluding balconies and terraces

While every attempt has been made to ensure accuracy, all measurements are approximate, not to scale. This floor plan is for illustrative purposes only.

GIRAFFE360

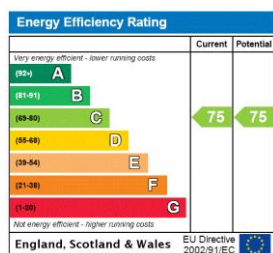
This floorplan is for illustration purposes only and is not to scale. The position and size of doors, windows, appliances and other features are approximate.

**Deposit: £1,840.38**

**Holding Deposit: £368.07**

**Council Tax Band: C**

Where no figures are shown, we have been unable to ascertain the information. All figures that are shown were correct at the time of printing.



Reading | 0118 4022 300 | [reading@winkworth.co.uk](mailto:reading@winkworth.co.uk)

**Winkworth**

**for every step...**

[winkworth.co.uk](http://winkworth.co.uk)

Winkworth wishes to inform prospective buyers and tenants that these particulars are a guide and act as information only. All our details are given in good faith and believed to be correct at the time of printing but they don't form part of an offer or contract. No Winkworth employee has authority to make or give any representation or warranty in relation to this property. All fixtures and fittings, whether fitted or not are deemed removable by the vendor unless stated otherwise and room sizes are measured between internal wall surfaces, including furnishings.