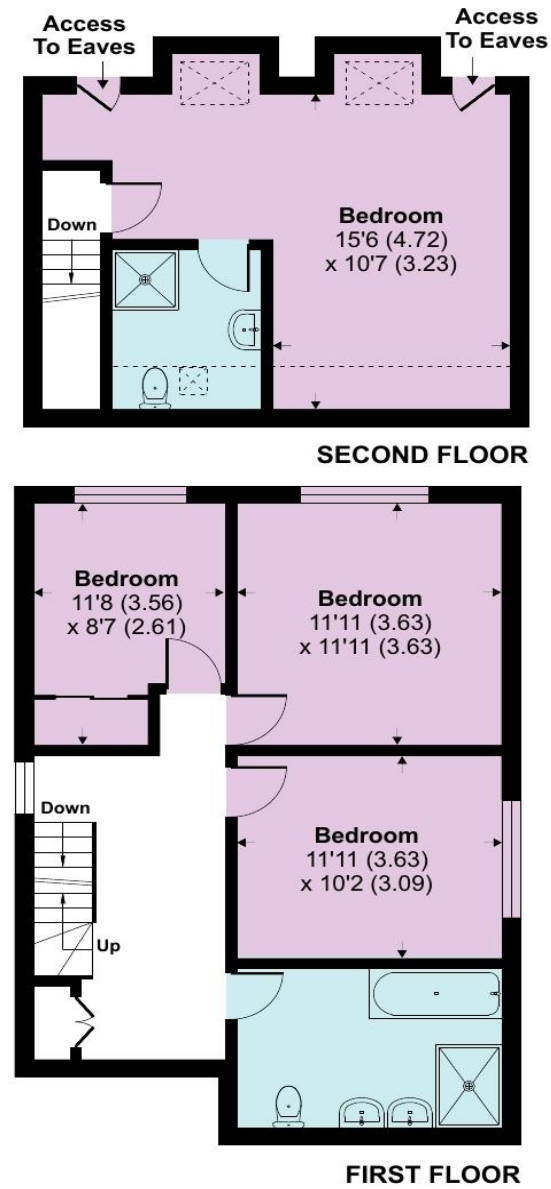
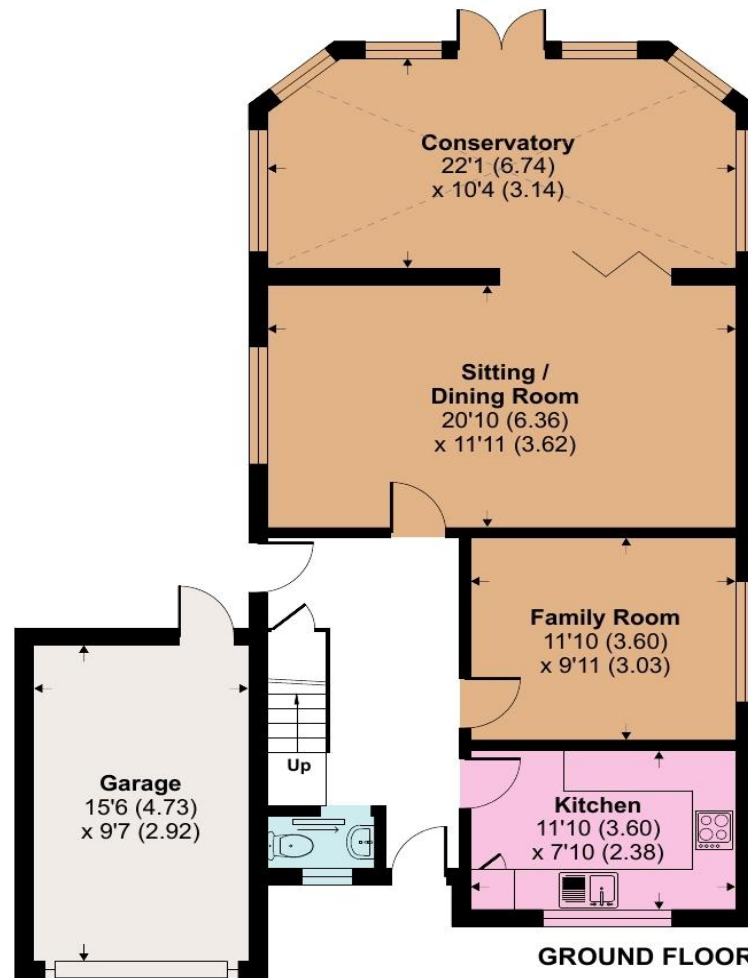
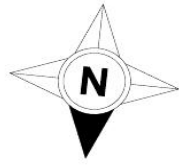


Churchfields, Bordon, GU35

Approximate Area = 1753 sq ft / 162.9 sq m
 Limited Use Area(s) = 38 sq ft / 3.5 sq m
 Garage = 149 sq ft / 13.8 sq m
 Total = 1940 sq ft / 180.2 sq m
 For identification only - Not to scale



Floor plan produced in accordance with RICS Property Measurement 2nd Edition, Incorporating International Property Measurement Standards (IPMS2 Residential). © nichecom 2025. Produced for Winkworth. REF: 1302763

Winkworth



Churchfields, Bordon, Hampshire, GU35

Guide Price £2,200 per month

A recently refurbished detached family home located on a quiet residential road in a sought-after village location. Available 4th October 25. Unfurnished EPC C

Tel 01252 733042
 Email Farnham@winkworth.co.uk
 99 West Street, Farnham, GU9 7EN

Winkworth

733042
Farnham@winkworth.co.uk
 99 West Street, Farnham, GU9 7EN

Winkworth

ACCOMMODATION

- Well presented detached family home
- Four bedrooms
- Principal bedroom with en suite
- Large south facing private garden
- Garage and ample driveway parking
- Views over Kingsley Common

DESCRIPTION

A well presented detached family home, in a superb cul-se-sac location in the popular village of Kingsley.

The house has a spacious feel with good size entrance hallway, downstairs w/c, family room and fitted kitchen with 'shaker' style cupboards and drawers. The spacious and light sitting/dining room has a log burning stove and bifold doors that lead out to a delightful conservatory that expands the full width of the house. There are double doors from the conservatory leading out to the garden.

On the first floor are two double bedrooms, a large single with build in wardrobes and a four piece family bathroom containing twin sinks, bath and separate shower. On the second floor there is a large principal bedroom with Velux windows overlooking Kingsley Common and an en suite shower room.

GARDEN

Outside to the front is a well kept front garden, driveway for three to four cars, EV charger, garage with up and over door and access to the rear garden. To the rear of the property is a generous, large, flat and private south facing garden which backs on to Kingsley common. The garden is mainly laid to lawn but there is also a small paved patio area.

SERVICES

Air source heat pump

LOCAL AUTHORITY

East Hampshire District Council, Petersfield. Band F



LOCATION

The property is situated in the quiet village of Kingsley, just on the edge of the South Downs National Park. In Kingsley village there is a post office, a church and The Cricketers pub, paddle courts and nearby Country Market has a café, a butcher, greengrocery, delicatessen and garden centre and hosts retail outlets such as Pets Corner, Maidenhead Aquatics, Mountain Warehouse and Cotton Traders.

Farnham is approximately 7 miles and Alton 5 miles. By road there is easy access to the A325, A31, A331, A3, and M3 connecting with the M25 and London to the north, also Guildford and Reading, Winchester and Petersfield. Direct trains to London Waterloo leave from Bentley, Alton and Farnham and links from this line go to Reading and Guildford.

The property has access to primary schools at Binsted, Bentley, Alton, Bordon and Rowledge and secondary schools in Alton, Farnham and Bordon. Local prep schools include St Edmund's, Amesbury, Edgeborough, Highfield, The Royal and Barfield. Independent senior schools include Lord Wandsworth, Frensham Heights, Churchers, Bedales, St Swithun's and Winchester College.

Local attractions include Alice Holt Forest with its activity centre, Frensham Ponds with a sailing club, Advantage Paddle Centre, The Bosc Pavillion in Bordon and golf clubs at Blacknest, East Worldham and Alton. There are several gym and fitness centres and newly built sports centres at both Bordon and Alton.

DISCLAIMER

Winkworth Estate Agents wish to inform any prospective tenant that these particulars were prepared in good faith and should be used as a general guide only. We have not carried out a detailed survey, nor tested any services, appliances or fittings. The measurements are approximate, rounded and are taken between internal walls often incorporating cupboards and alcoves. They should not be relied upon when purchasing fittings including carpets, curtains or appliances. Curtains/blinds, carpets and appliances whether fitted or not are deemed removable by the vendor unless they are specifically mentioned within these particulars.