



Christopher  
**Batten**

in association with

Winkworth

Plantation House, Holtwood, Wimborne, Dorset,

BH21 7DX



Plantation House  
Holtwood, Wimborne  
Dorset, BH21 7DX

Rarely available, a beautifully presented 5 bedroom detached family house set in approximately 0.5 acres on the fringes of Holt Forest and Holt Heath National Nature Reserve, less than 5 miles from Wimborne town centre, and offered for sale with NO FORWARD CHAIN.

PRICE GUIDE: £1,150,000  
FREEHOLD

COUNCIL TAX: Band H

EPC RATING: Band E

Christopher  
**Batten**

in association with

Winkworth







Refurbished to a high standard, with many outstanding features, the well proportioned accommodation includes 5 spacious bedrooms, 3 reception rooms, a superb kitchen/ breakfast room, dining room, utility, large gardens, a 2/3 car garage and excellent off road parking.

Traditionally constructed in the 1960s, the property has rendered elevations and brick lintels under a concrete tiled roof, and benefits from double glazing, LPG heating, and full fibre broadband.

The tiled entrance vestibule has double doors to a bright entrance hall with tiled floor and under stairs storage cupboard. There is a large cloakroom with WC, wash basin and full height cupboards, housing LPG gas boiler, water softener, hot water tank and airing cupboard.

The spacious, double aspect day room features a wood burner and looks onto the rear garden. An archway leads to a snug with two large windows offering lovely views of the front garden. Access to the generous, triple aspect lounge, which includes a Dru Circo LPG fire and wall mounted oak bookshelves, is through double-glazed doors with 3 steps leading down. To the other side of the hall, there is a dining room with fitted oak shelving and glazed double doors to the patio and garden.

The hub of the house is a large, beautifully presented, kitchen/ breakfast room with sliding glazed doors to the front garden and a full height window to the rear.



4



5



4

The kitchen features underfloor heating, an excellent range of units with quartz work surfaces, and a large island/breakfast bar with polished Foster stainless steel sink and work surface. Appliances include a Siemens induction hob, oven, microwave, two warming drawers, coffee machine, integrated dishwasher, Teka fridge-freezer and extractor. The breakfast area has full height cupboards and AEG wine cooler.

A sliding door leads to a spacious utility/boot room with underfloor heating, fitted storage cupboards, sink unit, work surfaces, space for white goods, and door to outside.

From the hall, a contemporary oak and glass staircase leads to an impressive, semi-galleried first floor landing with a study area.

The principal bedroom has an excellent range of fitted wardrobes, a large bay with full height windows giving a superb view over the garden. A concealed door gives access to a fully tiled, beautifully appointed, light and spacious en suite bath/shower room.

There is an inner landing with full height mirrored wardrobes. Bedroom 2 is a dual aspect double room with a large bay window and fully tiled en suite shower room with electric underfloor heating. Bedroom 3 is a spacious double room with wall-to-wall wardrobes.

Study/double bedroom 4 is a versatile space with a fully tiled en suite shower room with electric underfloor heating. A feature oak and chrome space saving staircase leads to a mezzanine area with large roof light. Bedroom 5 is arranged as an office, with an excellent range of fitted Neville Johnson oak furniture. Additionally there is a well presented family bathroom.

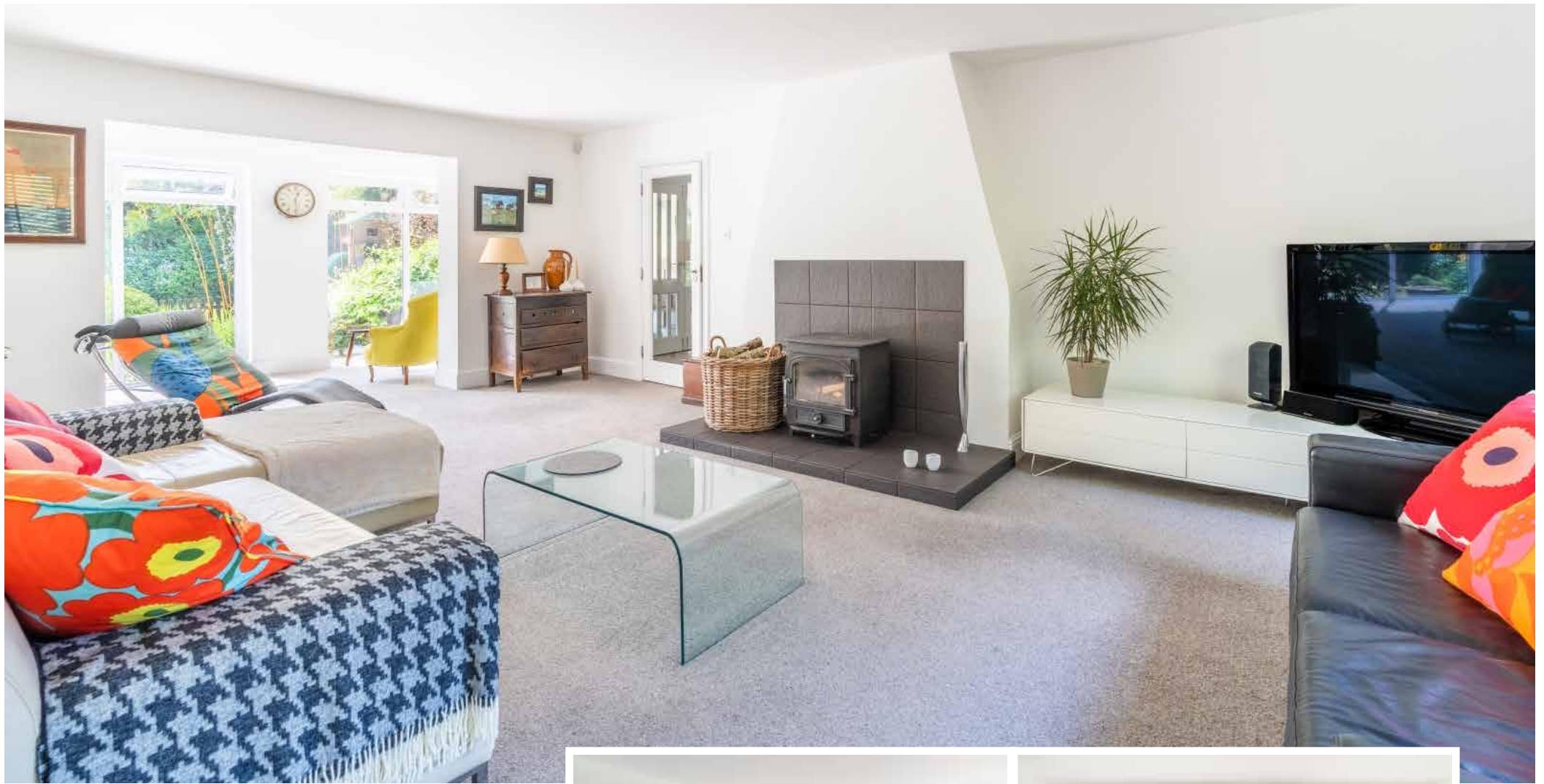
Outside there are 2 gravelled driveways, offering space for numerous vehicles. The spacious 2/3 car detached garage has 2 electric roller doors, power, lighting, door, water supply and plumbing for washing machine.

The gardens lie predominantly to the front and side of the house and include large, flat lawns, high beech and hawthorn hedges, mature oak trees, specimen plants, pond, rockery, large timber playhouse, and a secluded sun terrace with pergola over.









Location: The hamlet of Holtwood nestles between the villages of Holt, Gaunts Common, Hinton Martell and Horton, about 5 miles to the north of the historic town of Wimborne Minster.

Furzehill has a post office/shop, while Holt offers a pub/restaurant. Wimborne Minster with its variety of shops and amenities, is easily accessible by road. The wider area is served by state and independent schools including Queen Elizabeth's, Corfe Hills, Dumpton, Canford, Castle Court, Bryanston and Clayesmore. Poole and Bournemouth, both of which have mainline rail links to London Waterloo, are about 30 minutes' drive away.

Directions: From Wimborne, proceed north towards Cranborne on the B3078, and turn right, signposted to Furzehill. Proceed through the village, past The Stocks Inn on the left, and on to Holt. Pass The Old Inn on the right, take the second turning on the right, marked Pondhead, and continue through Holt Forest. As the road bends sharply to the left, Plantation House is straight ahead.















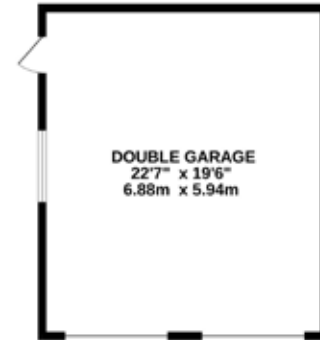




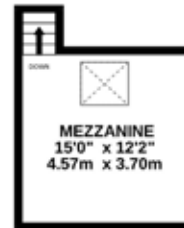
**TOTAL FLOOR AREA : 3771 sq.ft. (350.3 sq.m.) approx.**

Whilst every attempt has been made to ensure the accuracy of the floorplan contained here, measurements of doors, windows, rooms and any other items are approximate and no responsibility is taken for any error, omission or mis-statement. This plan is for illustrative purposes only and should be used as such by any prospective purchaser. The services, systems and appliances shown have not been tested and no guarantee as to their operability or efficiency can be given.

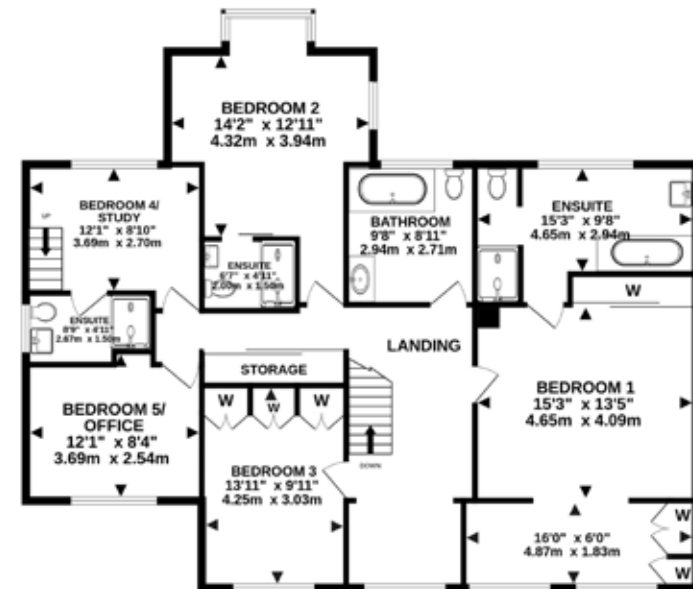
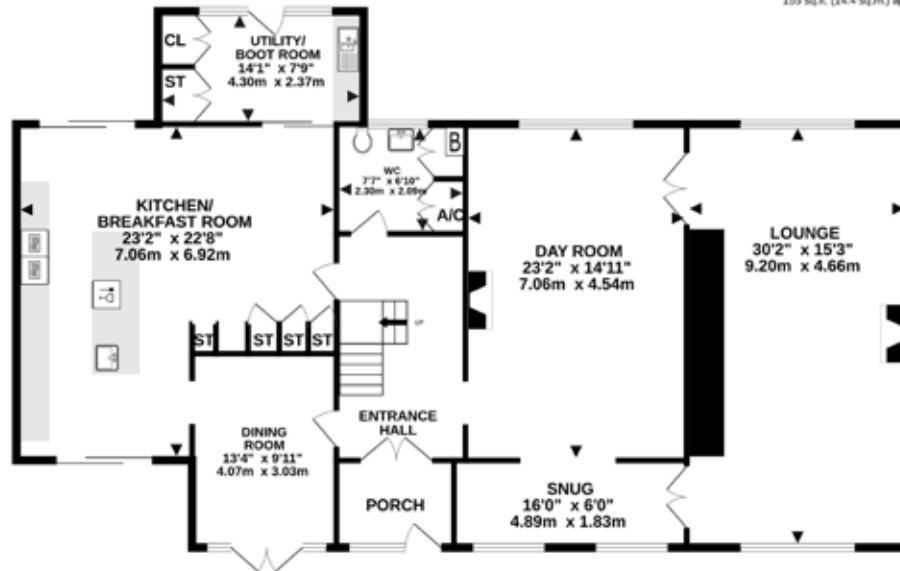
Made with Metropix ©2025



OUTBUILDING  
440 sq.ft. (40.9 sq.m.) approx.



2ND FLOOR  
155 sq.ft. (14.4 sq.m.) approx.



#### DISCLAIMER:

Winkworth wishes to inform prospective buyers that these particulars are a guide and act as information only. All our details are given in good faith and believed to be correct at the time of issue but they don't form part of an offer or contract. No Winkworth employee has authority to make or give any representation or warranty in relation to this property. All fixtures and fittings, whether fitted or not are deemed removable by the vendor unless stated otherwise and room sizes are measured between internal wall surfaces, including furnishings.





15 East Street | Wimborne | Dorset | BH21 1DT  
[properties@christopherbatten.co.uk](mailto:properties@christopherbatten.co.uk)  
01202 841171

Christopher  
**Batten**

in association with

Winkworth