



MOORHOUSE ROAD, W2

£510 PER WEEK (£2,210 PCM) Part Furnished/Unfurnished

A NEWLY REFURBISHED, CHARMING AND SPACIOUS ONE BEDROOM FLAT ON THE SECOND FLOOR OF THIS PRETTY PERIOD CONVERSION BUILDING ON THIS PEACEFUL TREE LINED STREET.

Long Let, 1 Bedroom, 1 Reception Room, 1 Bathroom, Flat/Apartment, Upper Floor without Lift, Part Furnished/Unfurnished, 444 Approx Sq Ft

Winkworth



DESCRIPTION:

The flat comprises spacious living room with wood floors and lovely original fireplace and semi open plan kitchen, spacious double bedroom to the back of the property with floor to ceiling fitted wardrobes and fully refurbished bathroom with bath and overhead shower. Please note, the property has been newly refurbished with a brand-new bathroom and freshly painted throughout. The property is offered unfurnished or part furnished and viewings are highly recommended.

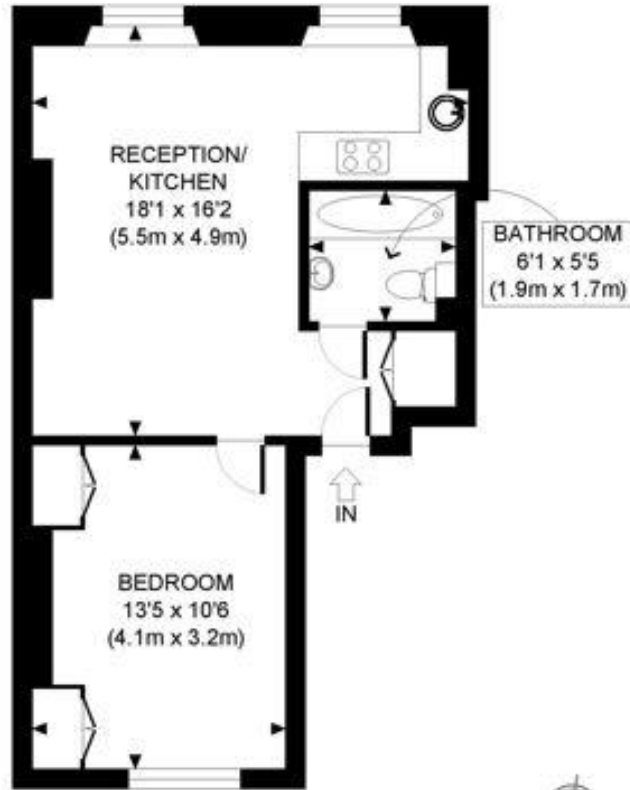
LOCATION:

Moorhouse Road is a quiet residential tree lined street, running north from Artesian Road, moments away from the popular stretch of Westbourne Grove, home to many of Notting Hill's most popular boutiques and restaurants.

LOCAL AUTHORITY AND COUNCIL TAX BAND:

City Of Westminster (Band C)





SECOND FLOOR
GROSS INTERNAL
FLOOR AREA 444 SQ FT

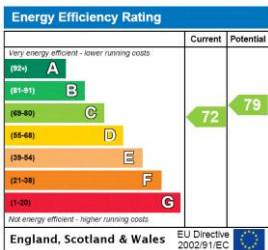
APPROX. GROSS INTERNAL FLOOR AREA: 444 SQ FT/ 41 SQM

Winkworth

This plan is for illustrative purposes only and should be used as such by any prospective client. Whilst every attempt has been made to ensure the accuracy of the Floor Plan contained here, measurements of the doors, windows, rooms and any other items are approximate and no responsibility is taken for any errors, omissions, or misstatement. The services, systems and appliances shown have not been tested and no guarantee as to the operability or efficiency can be given.

PROPERTY PHOTO PLANS
THE SIMPLY BEST FOR PROPERTY MARKETING

This floorplan is for illustration purposes only and is not to scale. The position and size of doors, windows, appliances and other features are approximate.



Notting Hill | 0207 727 3227 | nottinghill@winkworth.co.uk

Winkworth

winkworth.co.uk

for every step...

Winkworth wishes to inform prospective buyers and tenants that these particulars are a guide and act as information only. All our details are given in good faith and believed to be correct at the time of printing but they don't form part of an offer or contract. No Winkworth employee has authority to make or give any representation or warranty in relation to this property. All fixtures and fittings, whether fitted or not are deemed removable by the vendor unless stated otherwise and room sizes are measured between internal wall surfaces, including furnishings.