



Moreton Street, SW1V

£3,000 PER MONTH

FURNISHED

AT A GLANCE

- Two Double Bedrooms
- Two Bathrooms
- Large Reception
- Day Porter
- Furnished
- Council Tax Band: F

Winkworth

for every step...



Score	Energy rating	Current	Potential
92+	A		
81-91	B	83 B	83 B
69-80	C		
55-68	D		
39-54	E		
21-38	F		
1-20	G		

MORETON STREET, SW1V

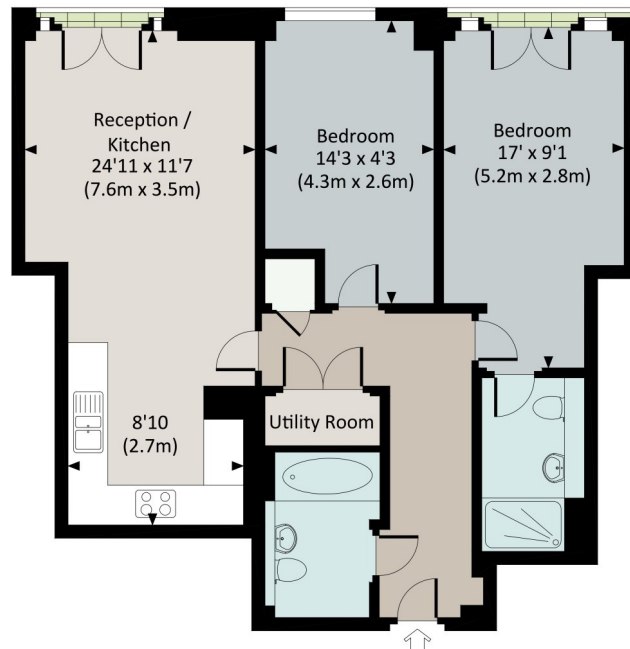
£3,000 PER MONTH

FURNISHED

Beautifully appointed throughout, the property benefits from ample living and entertaining space, oak flooring, oversized panoramic windows and white bezel down lighters. The well specified kitchen has Bosch integrated appliances and there's a spacious master bedroom with en-suite and a second double bedroom which is served by a family bathroom. The modern bathrooms boast marble counter tops that sit below a mirror vanity unit with under mounted lighting and storage. The development further benefits from a day time porter, bicycle storage space, secure video entry system and CCTV throughout.

MORETON STREET, SW1V

Approx. gross internal area
761 Sq.Ft. / 70.7 Sq.M.



FOURTH FLOOR



All measurements have been made in accordance with RICS Code of Measuring Practice which are approximate only and only for illustrative purposes. For the avoidance of doubt, Dowling Jones Design shall not be liable for any reliance on these measurements. © 2017 www.dowlingjones.com 020 7610 9933

winkworth wishes to inform prospective buyers and tenants that these particulars are a guide and act as information only. All our details are given in good faith and believed to be correct at the time of printing but they don't form part of an offer or contract. No winkworth employee has authority to make or give any representation or warranty in relation to this property. All fixtures and fittings, whether fitted or not are deemed removable by the vendor unless stated otherwise and room sizes are measured between internal wall surfaces - including fireplaces.

Pimlico & Westminster | 020 7828 1786 |
pimlico@winkworth.co.uk

winkworth.co.uk/pimlico

Winkworth

for every step...