



BRAMERTON, WILLESDEN LANE, LONDON, NW6

**£450,000 SHARE OF FREEHOLD**

**SPACIOUS TWO DOUBLE BEDROOM APARTMENT WITH  
ACCESS TO RESIDENTS COMMUNAL GARDENS, SPREAD  
OVER 730 SQFT WITH ADDITIONAL PRIVATE GARAGE.**

Kensal & Queens Park | 0208 960 4947 | [kensalrise@winkworth.co.uk](mailto:kensalrise@winkworth.co.uk)

**Winkworth**





## LOCATION:

Bramerton Court is moments from the wide array of shops and restaurants Willesden Green has to offer. There are also excellent transport links with Willesden Green tube station offering Jubilee line into Central London.





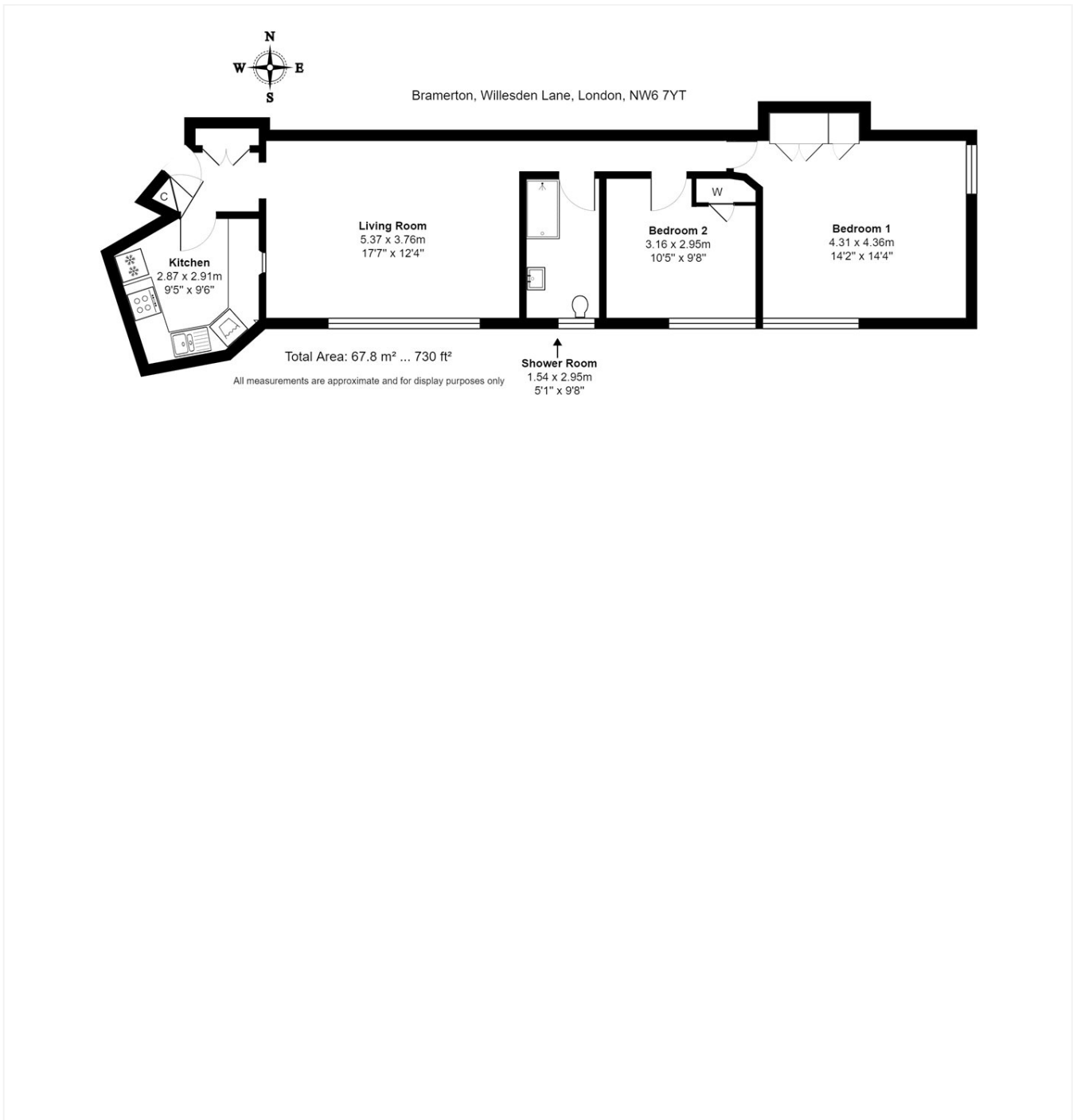


## DESCRIPTION:

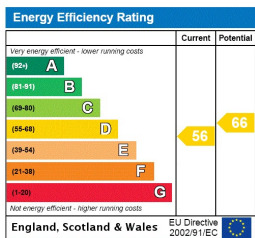
Set on the first floor, this large apartment comprises of two double bedrooms, with built in storage. There is a tiled three piece shower suite, a separate fully fitted kitchen and a spacious reception and dining room.

The entire flat overlooks the manicured communal gardens which is accessed from the rear of the building. There is a resident's lift in the communal area and the apartment is offered with no upper chain. Additional features include off street parking (first come first serve), private garage, and share of freehold tenure.

**Winkworth**



This floorplan is for illustration purposes only and is not to scale. The position and size of doors, windows, appliances and other features are approximate.



Kensal & Queens Park | 0208 960 4947 | kensalrise@winkworth.co.uk

**Winkworth**

winkworth.co.uk

See things differently

winkworth wishes to inform prospective buyers and tenants that these particulars are a guide and act as information only. All our details are given in good faith and believed to be correct at the time of printing but they don't form part of an offer or contract. No winkworth employee has authority to make or give any representation or warranty in relation to this property. All fixtures and fittings, whether fitted or not are deemed removable by the vendor unless stated otherwise and room sizes are measured between internal wall surfaces, including furnishings.