



HERBERT GARDENS, LONDON, NW10
£625,000 LEASEHOLD

A SPACIOUS 2-3 BEDROOM, SPLIT LEVEL FLAT WITH PRIVATE ENTRANCE BOASTING AMPLE NATURAL LIGHT AND OFF-STREET PARKING IN A SOUGHT AFTER LOCATION, HERBERT GARDENS, FOR ITS PROXIMITY TO AMENITIES AND TRANSPORT LINKS.

Kensal Rise & Queens Park | 0208 960 4947 | kensalrise@winkworth.co.uk





LOCATION:

Herbert Gardens is a short walk from College Road with its array of independent shops, cafes, and popular Gastropub, The Island - which is widely considered the best in the area. The location also means that both Kensal Rise and Kensal Green Stations are less than a 0.25 mile from the front door, meaning easy access to both the London Overground and the London Underground (Bakerloo line). Various parks including Queens Park are located close by, or it's very easy to get to Hampstead Heath on the Overground.



Winkworth



DESCRIPTION:

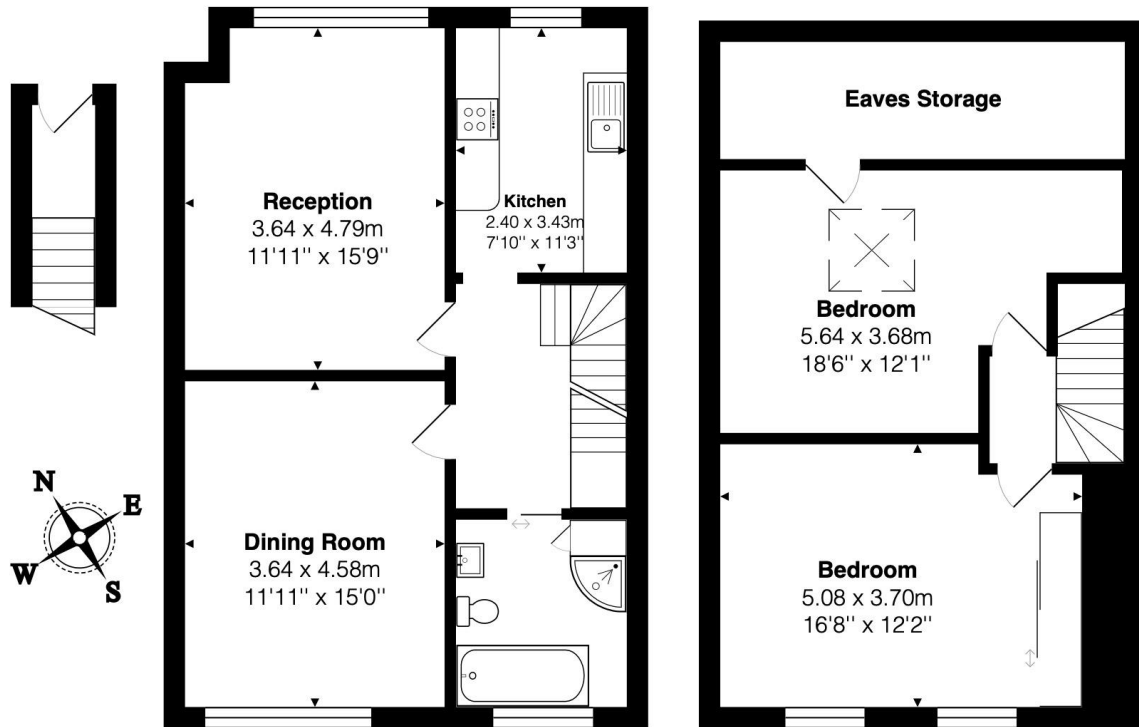
A well-presented, bright and airy 2-3 bedroom split level flat located on the popular Herbert Gardens. The private front entrance leads you up to the first floor where you will find a spacious front reception room with feature fire place, separate kitchen with ample storage and connections for all utilities including dishwasher and washing. The main bathroom is a tiled four piece suite with towel rail. The flat offers flexibility to be used as either a 2 bedroom, or 3 bedroom flat. Still on the first floor, the rear facing room is a large room which can either be used as a separate dining space, or 3rd double bedroom.

On the second floor, you will find two double bedrooms, which are both generously sized and offering additional eaves storage. The property also benefits from off-street parking, ensuring convenience and safety for the owners, especially those with children.

Overall the property is offered in good order, but can still benefit further from a new owner adding their own touch to it.

Viewing comes highly recommended.

Winkworth



Total Area: 112.1 m² ... 1206 ft²
 All measurements are approximate and for display purposes only

This floorplan is for illustration purposes only and is not to scale. The position and size of doors, windows, appliances and other features are approximate.

Kensal Rise & Queens Park | 0208 960 4947 | kensalrise@winkworth.co.uk



winkworth.co.uk

See things differently

winkworth wishes to inform prospective buyers and tenants that these particulars are a guide and act as information only. All our details are given in good faith and believed to be correct at the time of printing but they don't form part of an offer or contract. No winkworth employee has authority to make or give any representation or warranty in relation to this property. All fixtures and fittings, whether fitted or not are deemed removable by the vendor unless stated otherwise and room sizes are measured between internal wall surfaces, including furnishings.