

SQUIRES LANE, LONDON, N3
£385,000 SHARE OF FREEHOLD

A BRIGHT AND SPACIOUS ONE BEDROOM PERIOD STYLE FLAT WITH ITS OWN SECTION OF GARDEN

Finchley | 020 8349 3388 | finchley@winkworth.co.uk

Winkworth

for every step...

winkworth.co.uk



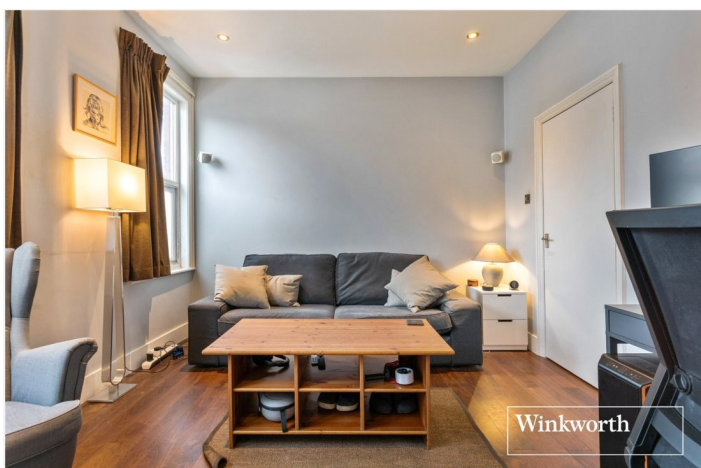
DESCRIPTION:

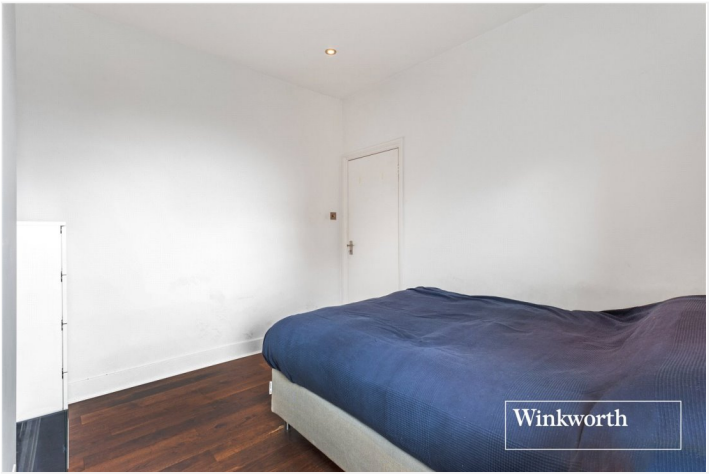
We are pleased to offer to the market, this one bedroom, first floor period style conversion flat, conveniently located for Finchley Central underground, shopping facilities, Outstanding Ofsted Rated Primary Schools, Victoria Park and the listed Stephens House & Gardens. The property comprises of a spacious and bright reception room, double bedroom, modern fitted kitchen & bathroom and direct access to its own private section of garden. This wonderful property is being offered with a share of freehold and is currently stamp duty free for first time buyers.

An internal viewing is highly recommended.

AT A GLANCE

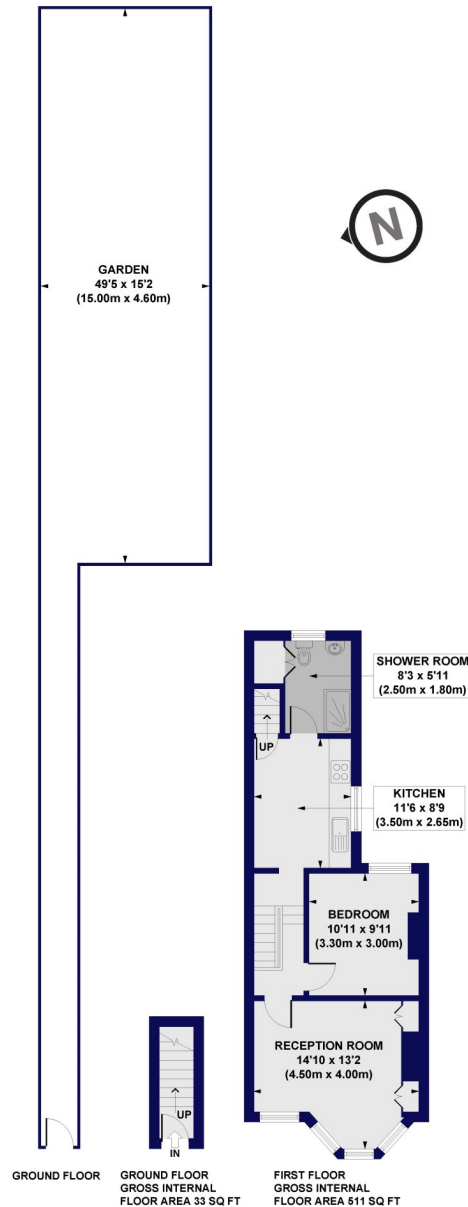
- Set in a period style building
- Ideal location for amenities & transport links
- First floor
- Spacious reception room
- Modern fitted kitchen & bathroom
- Private section of garden
- Share of freehold





Squires Lane, N3

Approx. Gross Internal Floor Area 544 sq. ft / 50.58 sq. m



All measurements of walls, doors, windows, fittings and appliances, including their size and location, are shown as standard sizes and do not constitute any warranty or representation by the seller, their agent or CP Creative. Any intending purchaser must satisfy himself by inspection or otherwise as to the correctness of the information contained in these plans. This plan is for illustrative purposes only and should be used as such by any prospective purchasers.

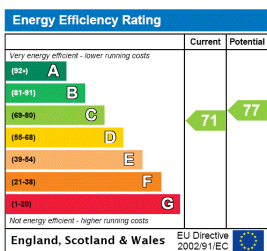
Winkworth

This floorplan is for illustration purposes only and is not to scale. The position and size of doors, windows, appliances and other features are approximate.

Tenure: Share of Freehold

Council Tax Band: C

Where no figures are shown, we have been unable to ascertain the information. All figures that are shown were correct at the time of printing.



Finchley | 020 8349 3388 | finchley@winkworth.co.uk

Winkworth

for every step...

winkworth.co.uk

Winkworth wishes to inform prospective buyers and tenants that these particulars are a guide and act as information only. All our details are given in good faith and believed to be correct at the time of printing but they don't form part of an offer or contract. No Winkworth employee has authority to make or give any representation or warranty in relation to this property. All fixtures and fittings, whether fitted or not are deemed removable by the vendor unless stated otherwise and room sizes are measured between internal wall surfaces, including furnishings.