



Davisville Road, W12

£825,000 Leasehold

A stunning two bedroom flat with private garden, on the ground floor of an end of terrace Victorian house.

Reception Room | Open Plan Kitchen | 2 Bedrooms | Bathroom | Garden | 899 Sq Ft / 84 Sq M | Council Tax Band D | EPC Rating Band C

Winkworth



LOCATION

Davisville Road is to the east of Askew Road, with the area offering an eclectic mix of independent shops, cafes and restaurants, with the open space of Wendell Park and Ravenscourt Park close by and the amenities of Chiswick High Road also within easy reach. Stamford Brook, Goldhawk Road and Ravenscourt Park stations are the closest, whilst Shepherd's Bush Central Line and London Overground stations are also within easy reach. A number of well regarded schools and nurseries, in both state and private sectors, are close by.

DESCRIPTION

Immaculately presented throughout having been extended and refurbished by the current owner, the flat offers accommodation which comprises entrance hall, two double bedrooms, bathroom and kitchen/reception room with crittall style doors leading to a private garden, with the benefit of side access.

Lease:- 189 years from 29 September 1985

Service Charge:- 50 % of outgoings paid on an ad hoc basis.

Building Insurance for last year £380

Ground Rent:- N/A





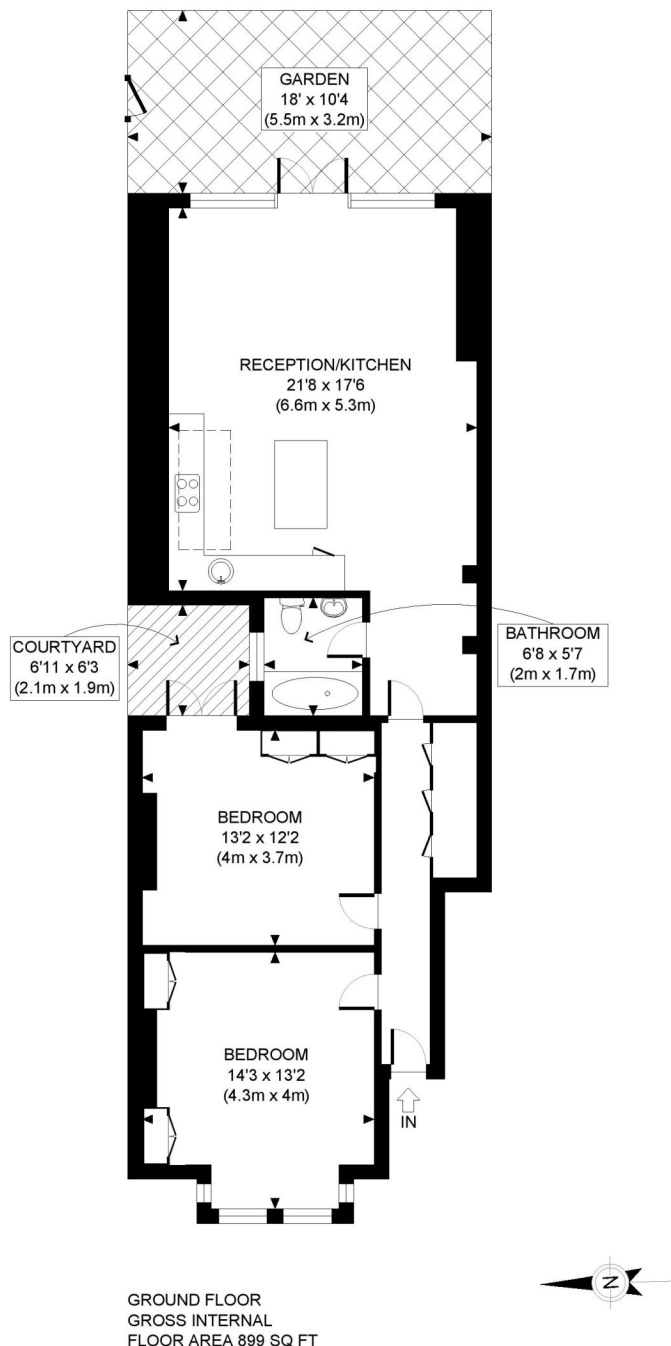
LOCAL AUTHORITY
Hammersmith & Fulham

TENURE
Leasehold 149 years 3 months.

PRICE: £825,000 Leasehold



Score	Energy rating	Current	Potential
92+	A		
81-91	B		
69-80	C	69 C	77 C
55-68	D		
39-54	E		
21-38	F		
1-20	G		



APPROX. GROSS INTERNAL FLOOR AREA: 899 SQ FT/ 84 SQM

Winkworth

DAVISVILLE ROAD, W12

This plan is for illustrative purposes only and should be used as such by any prospective client. Whilst every attempt has been made to ensure the accuracy of the Floor Plan contained here, measurements of the doors, windows, rooms and any other items are approximate and no responsibility is taken for any errors, omissions, or misstatement. The services, systems and appliances shown have not been tested and no guarantee as to the operability or efficiency can be given.

PROPERTY PHOTO PLANS .CO.UK
ONE STOP SHOP FOR PROPERTY MARKETING

The displayed square footage is taken from the floor plans with measurements created using the Royal Institute of Chartered Surveyors' Code of Practice for Measuring. These measurements are approximate and included for illustrative purposes only. Winkworth does not make any representation as to the accuracy of these measurements and you should seek to verify them for yourself. Winkworth accept no liability for any loss you may suffer if you rely on these measurements.

Shepherds Bush | 020 8735 3266 | shepherdsbush@winkworth.co.uk

Winkworth

for every step...

Under the Property Misdescriptions Act 1991, these Particulars are a guide and act as information only. All details are given in good faith and are believed to be correct at time of printing. Winkworth give no representation as to their accuracy and potential purchasers or tenants must satisfy themselves by inspection or otherwise as to their correctness. No employee of Winkworth has authority to make or give any representation or warranty in relation to this property.