



LUSHINGTON ROAD, LONDON, NW10
£525,000 SHARE OF FREEHOLD

**A SPACIOUS TWO DOUBLE BEDROOM FIRST FLOOR
FLAT IN A PERIOD CONVERSION AND SOUGHT AFTER
LOCATION.**

Kensal & Queens Park | 0208 960 4947 | kensalrise@winkworth.co.uk





LOCATION:

Located on a gorgeous and sought after residential road which is ideally located within a short walk of the Underground and Overground (Zone 2, Bakerloo line), allowing for quick and convenient access both in and out of Central London. College Road is within walking distance offering independent coffee shops, GastroPubs and eateries.



Winkworth



DESCRIPTION:

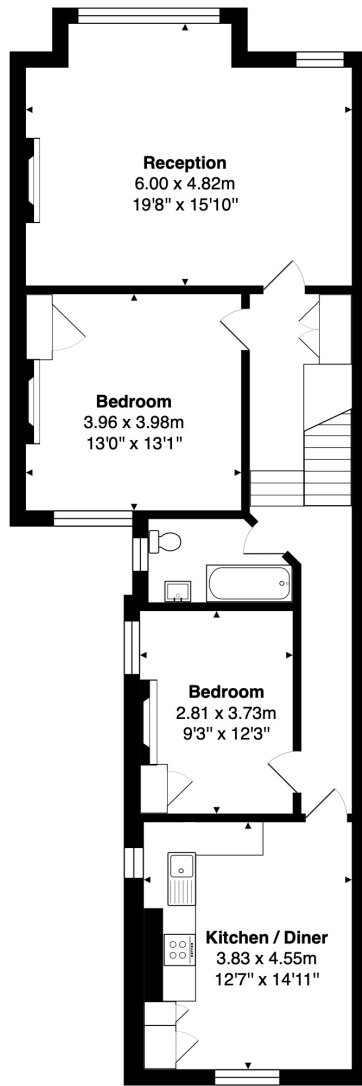
Comprising of two large double bedrooms, a stunning bay fronted reception and dining room that offers an abundance of natural light, modern bathroom and large fully fitted eat in kitchen to the rear.

This flat also offers a small private section of garden (access via side gate).

The property is offered chain-free with a Share of Freehold.

Viewing comes highly recommended.



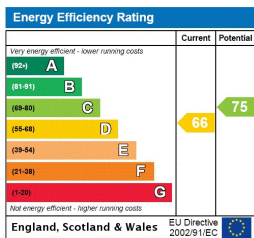


First Floor

Total Area: 91.9 m² ... 989 ft²

All measurements are approximate and for display purposes only

This floorplan is for illustration purposes only and is not to scale. The position and size of doors, windows, appliances and other features are approximate.



Kensal & Queens Park | 0208 960 4947 | kensalrise@winkworth.co.uk

Winkworth

winkworth.co.uk

See things differently

winkworth wishes to inform prospective buyers and tenants that these particulars are a guide and act as information only. All our details are given in good faith and believed to be correct at the time of printing but they don't form part of an offer or contract. No winkworth employee has authority to make or give any representation or warranty in relation to this property. All fixtures and fittings, whether fitted or not are deemed removable by the vendor unless stated otherwise and room sizes are measured between internal wall surfaces, including furnishings.