



GLENGALL ROAD, NW6

£3,000 PER MONTH PART FURNISHED, UNFURNISHED

LOCATED WITHIN A MAJESTIC CONVERTED SCHOOL BUILDING IS THIS ABSOLUTELY STUNNING TWO BEDROOM, TWO BATHROOM APARTMENT

Kensal Rise & Queens Park | 0208 960 4947 | kensalrise@winkworth.co.uk

Winkworth

for every step...

winkworth.co.uk



DESCRIPTION:

This exceptional two-bedroom, two-bathroom apartment (including one en-suite) is located on the second floor of a beautifully converted former school, with both lift access and a striking original staircase.

Once a classroom, this unique home has been thoughtfully transformed into a stunning living space, featuring soaring 17ft+ ceilings and expansive south-facing windows that flood the open-plan kitchen and reception room with natural light. The apartment comprises two double bedrooms, the primary benefitting from the en-suite and both with bespoke, floor-to-ceiling fitted wardrobes, and an additional contemporary bathroom.

Additional highlights include elegant wooden flooring, distinctive light fixtures, a recently installed separate washing/drying machine, and impressive ceiling height throughout. The property is offered part-furnished for added convenience.

Part Furnished with the below

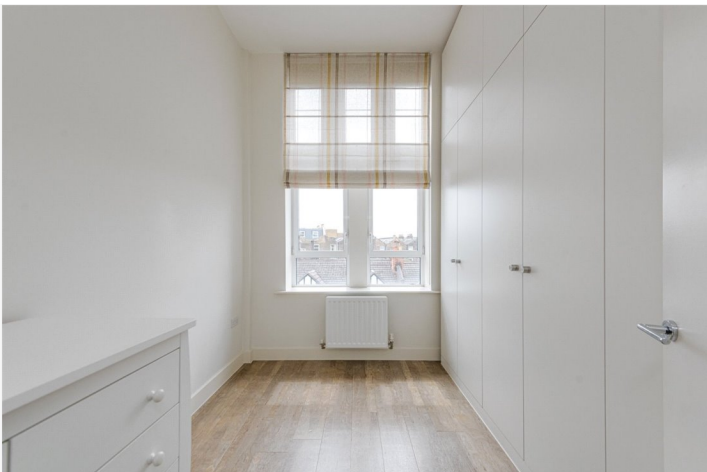
Living Room / Kitchen

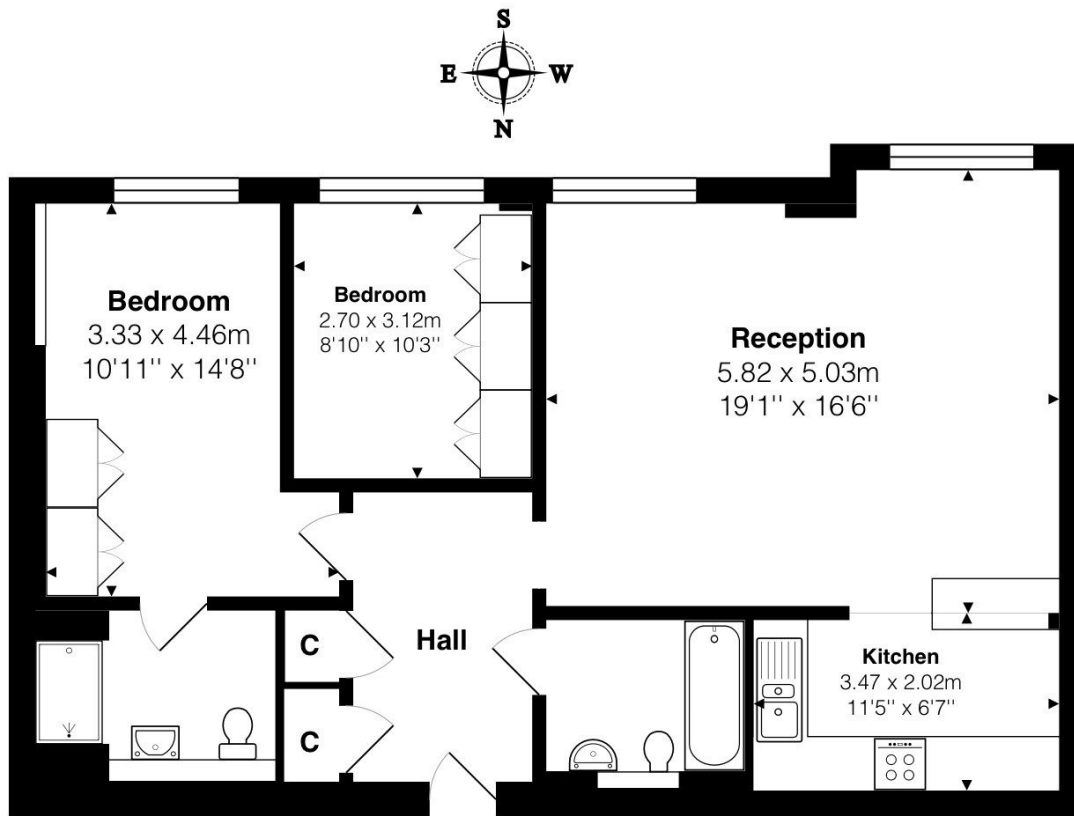
- Sofa + Matching Stool
- Wooden Stool
- 4 Breakfast Bar Chairs
- Some Crockery + Glass wear

Additional

- Ladder

Secure off-street parking available at an additional cost



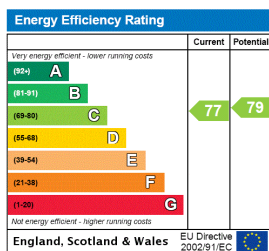


2nd Floor

Total Area: 77.1 m² ... 830 ft²

All measurements are approximate and for display purposes only

This floorplan is for illustration purposes only and is not to scale. The position and size of doors, windows, appliances and other features are approximate.



Deposit: 5 weeks rent

Holding Deposit: 1 weeks rent

Council Tax Band: D

Where no figures are shown, we have been unable to ascertain the information. All figures that are shown were correct at the time of printing.

Winkworth

Kensal Rise & Queens Park | 0208 960 4947 | kensalrise@winkworth.co.uk

for every step...

winkworth.co.uk

Winkworth wishes to inform prospective buyers and tenants that these particulars are a guide and act as information only. All our details are given in good faith and believed to be correct at the time of printing but they don't form part of an offer or contract. No Winkworth employee has authority to make or give any representation or warranty in relation to this property. All fixtures and fittings, whether fitted or not are deemed removable by the vendor unless stated otherwise and room sizes are measured between internal wall surfaces, including furnishings.