



PROVIDENCE COURT, PROVIDENCE PLACE, LONDON, N1
£525,000 LEASEHOLD

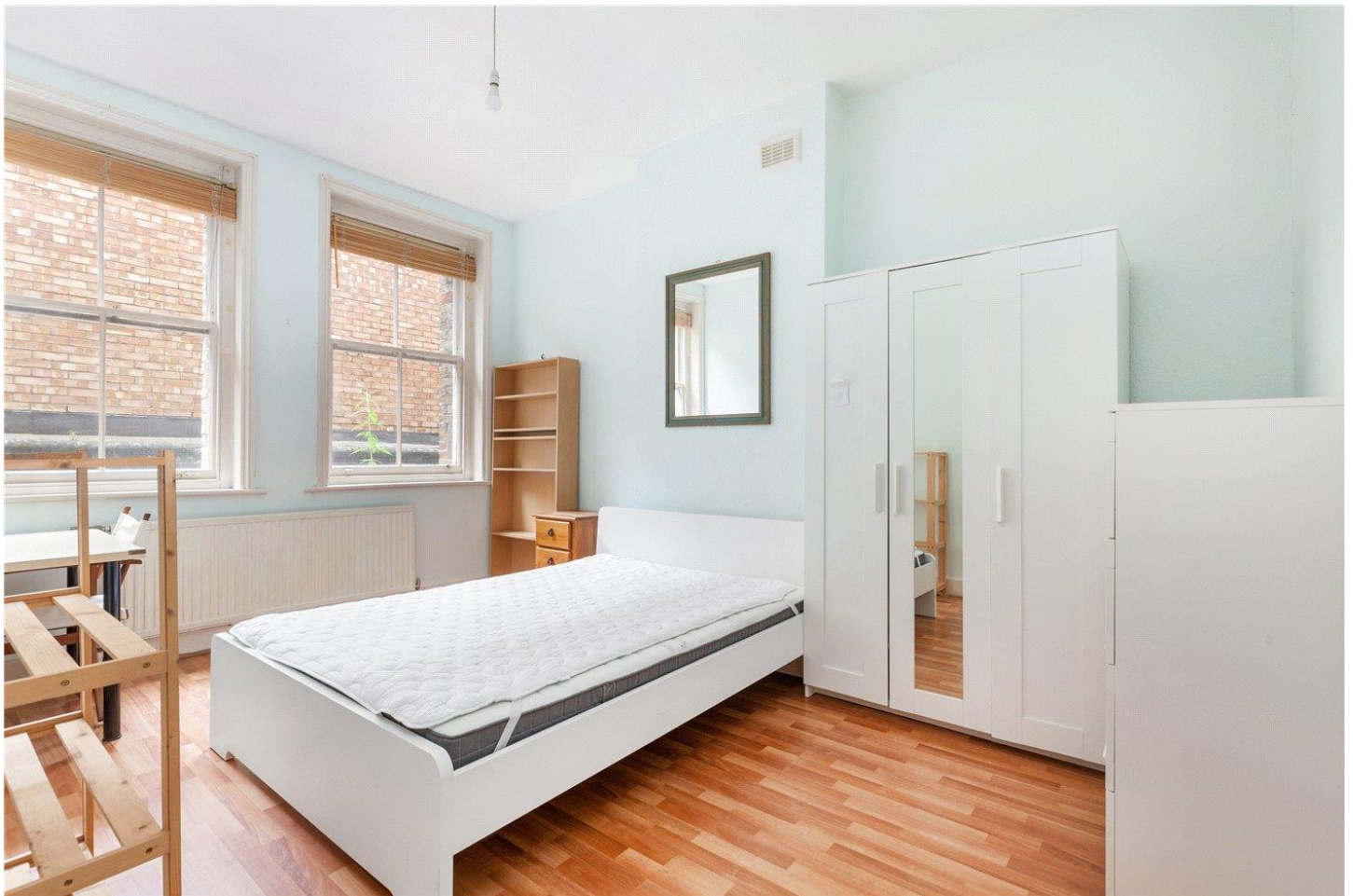
A SIZABLE THREE BEDROOM GROUND FLOOR FLAT SET JUST OFF UPPER STREET

Islington | 0207 354 2480 | islington@winkworth.co.uk

Winkworth

winkworth.co.uk

See things differently



DESCRIPTION:

This sizable three bedroom ground floor flat is located in a secure gated block just off Upper Street and spans 1000sqft.

The flat offers well proportioned, light filled rooms throughout alongside high ceilings and a practical layout. A generous living room offers ample space for entertaining and leads though to a large kitchen which provides plenty of space for a large dining table. All three double bedrooms are of a good size and benefit from sash windows. A family sized bathroom is located from the hallway alongside a handy wc.

Providence Court is perfectly positioned just off Upper Street. A vast selection of excellent restaurants, bars and high street shops are located on the doorstep alongside excellent transport links. Angel station provides the closest underground service on the Northern line whilst Highbury and Islington station is located at the north end of Upper Street and provides overground services and the Victoria line. An array of bus routes are on hand offering effortless access across London whilst international links are facilitated from St Pancras.

Winkworth



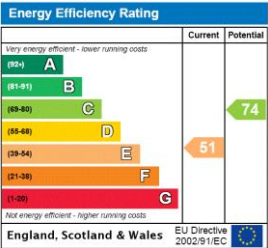
Winkworth

Providence Court, Providence Place, N1
 Approx. Gross Internal Floor Area 1000 sq. ft / 92.90 sq. m



COMPLIANT WITH RICS CODE OF MEASURING PRACTICE. Floorplan is for illustrative purposes only and is not to scale. Every attempt has been made to ensure the accuracy of the floorplan shown, however all measurements, fixtures, fittings and data shown are an approximate interpretation for illustrative purposes only. Liability for errors, omissions or mis-statement through negligence or otherwise is hereby excluded.

This floorplan is for illustration purposes only and is not to scale. The position and size of doors, windows, appliances and other features are approximate.



Islington | 0207 354 2480 | islington@winkworth.co.uk



winkworth.co.uk

See things differently

Winkworth wishes to inform prospective buyers and tenants that these particulars are a guide and act as information only. All our details are given in good faith and believed to be correct at the time of printing but they don't form part of an offer or contract. No Winkworth employee has authority to make or give any representation or warranty in relation to this property. All fixtures and fittings, whether fitted or not are deemed removable by the vendor unless stated otherwise and room sizes are measured between internal wall surfaces, including furnishings.