



**GREYHOUND ROAD, W14**  
**£550,000 LEASEHOLD**

Fulham & Parsons Green | 020 7731 3388 | [fulham@winkworth.co.uk](mailto:fulham@winkworth.co.uk)

**Winkworth**

for every step...

[winkworth.co.uk](http://winkworth.co.uk)





## DESCRIPTION:

An excellent two double bedroom purpose built flat on Greyhound Road in Jubilee Mansions on the second floor of a well-maintained building. The property is sold with a long lease and offered to the market chain free.

## AT A GLANCE



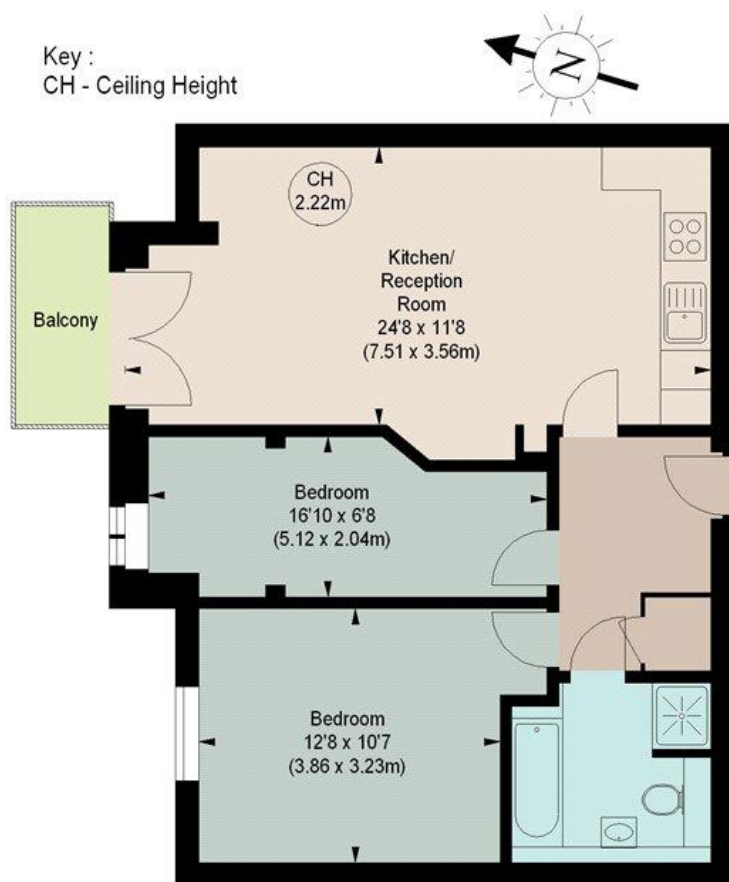






# JUBILEE MANSIONS, W14

Approximate gross internal area  
682 sq ft / 63.36 sq m



## SECOND FLOOR

The floor plan is not to scale and measurements and areas shown are approximate and therefore should be used for illustrative purposes only. The plan has been prepared in accordance with the RICS code of Measuring Practice and whilst we have confidence in the information produced, it must not be relied on. If there is any aspect of particular importance, you should carry out or commission your own inspection of the property.  
Copyright of FeaturePRO.

This floorplan is for illustration purposes only and is not to scale. The position and size of doors, windows, appliances and other features are approximate.

Score	Energy rating	Current	Potential
92+	A		
81-91	B		
69-80	C	72 C	72 C
55-68	D		
39-54	E		
21-38	F		
1-20	G		

**Tenure:** Leasehold

**Term:** 96 year and 0 months

**Service Charge:** £3057 per annum

**Ground Rent:** £ 0 Annually (subject to increase)

**Council Tax Band:** E

Where no figures are shown, we have been unable to ascertain the information. All figures that are shown were correct at the time of printing.

Fulham & Parsons Green | 020 7731 3388 | fulham@winkworth.co.uk

**Winkworth**

for every step...

winkworth.co.uk

Winkworth wishes to inform prospective buyers and tenants that these particulars are a guide and act as information only. All our details are given in good faith and believed to be correct at the time of printing but they don't form part of an offer or contract. No Winkworth employee has authority to make or give any representation or warranty in relation to this property. All fixtures and fittings, whether fitted or not are deemed removable by the vendor unless stated otherwise and room sizes are measured between internal wall surfaces, including furnishings.