

STIRLING COURT, MARSHALL STREET, W1  
£660,000 LEASEHOLD

Winkworth





## STIRLING COURT, MARSHALL STREET

**A nicely presented one-bedroom apartment with exceptional light and views, set on the tenth floor of a modern building on Marshall Street in the vibrant heart of London's Soho.**

The property comprises an entrance hall, a comfortable reception room with dual-aspect views, a separate kitchen, a double bedroom, and a bathroom.

The flat has been rented and is in good condition, though buyers may wish to update it.

Stirling Court is located at the junction of Marshall Street and Broadwick Street, just seconds from Carnaby Street, providing excellent access to the full range of retail, entertainment, dining, and lifestyle options that Soho and the West End have to offer.

The communal areas are in excellent condition. There is a daytime building manager and a communal roof terrace.

The nearest Underground stations are Leicester Square, Piccadilly Circus, Oxford Circus, and Tottenham Court Road.

Leasehold: About 131 years remaining

Service Charge: Approx. £3,650 per annum plus £1,830 reserve

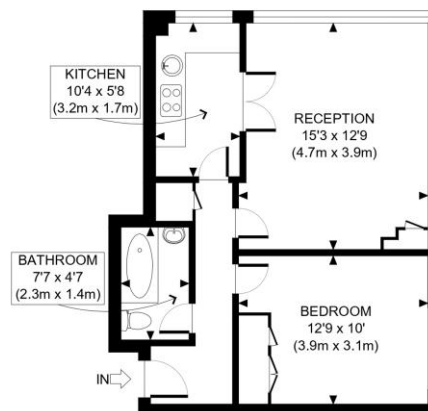
Ground Rent: N/A

Council Tax: Band D, About £1,019 per annum









TENTH FLOOR  
GROSS INTERNAL  
FLOOR AREA 490 SQ FT



APPROX. GROSS INTERNAL FLOOR AREA: 490 SQ FT/ 46 SQM

**Winkworth**

This plan is for illustrative purposes only and should be used as such by any prospective client. Whilst every attempt has been made to ensure the accuracy of the Floor Plan contained here, measurements of the doors, windows, rooms and any other items are approximate and no responsibility is taken for any errors, omissions, or misstatement. The services, systems and appliances shown have not been tested and no guarantee as to the operability or efficiency can be given.

PROPERTY PHOTO PLANS COM  
THE STEP-BY-STEP PROPERTY BLUEPRINT

Score	Energy rating	Current	Potential
92+	A		
81-91	B		
69-80	C		73 C
55-68	D		
39-54	E	52 E	
21-38	F		
1-20	G		

West End | 020 7240 3322 | westend@winkworth.co.uk

winkworth.co.uk

Winkworth wishes to inform prospective buyers and tenants that these particulars are a guide and act as information only. All our details are given in good faith and believed to be correct at the time of printing but they don't form part of an offer or contract. No Winkworth employee has authority to make or give any representation or warranty in relation to this property. All fixtures and fittings, whether fitted or not are deemed removable by the vendor unless stated otherwise and room sizes are measured between internal wall surfaces, including furnishings.

**Winkworth**