



Kings Oak Court, Reading, Berkshire, RG1 4PX

£1,550 per month *Furnished*

2  1  1 

Modern second floor two double bedroom apartment, located in Reading town centre and conveniently placed for access to Reading station, The Oracle Shopping complex and other local amenities. The apartment comprises two double bedrooms, an open-plan lounge/dining area plus a separate kitchen with fitted appliances, three piece bathroom and an en suite to the master bedroom. The apartment further benefits from one allocated parking space. Available 13th December 2025. Furnished.

KEY FEATURES

- Two bedroom second floor apartment
- Located in Reading Town Centre
- Two bathrooms
- One Allocated Parking Space
- Council Tax Band D
- Available 13th December
- Furnished

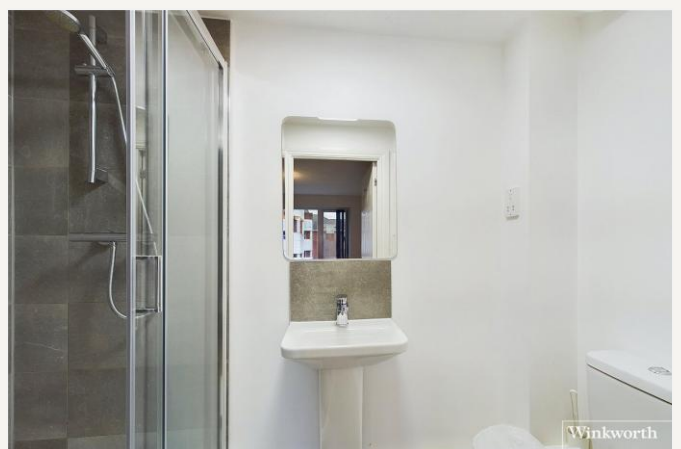


Reading

0118 4022 300 | reading@winkworth.co.uk

Winkworth

for every step...



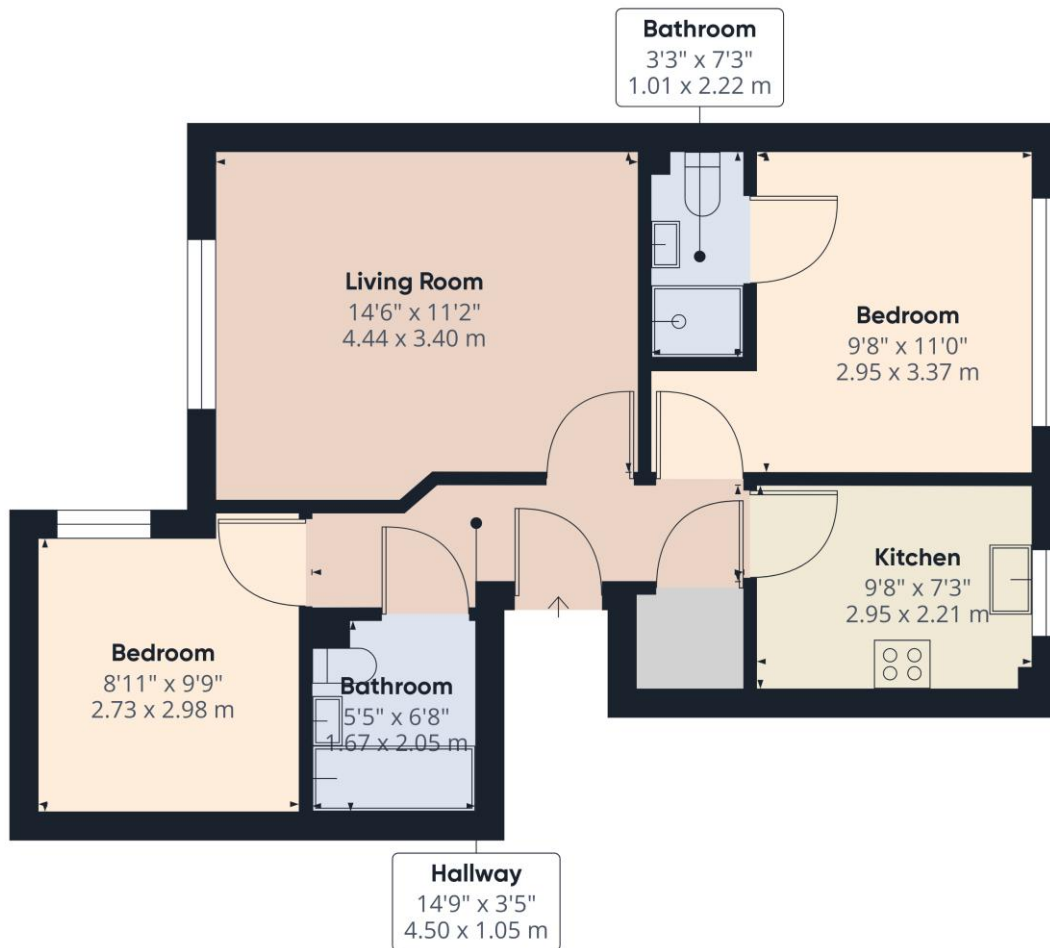


MATERIAL INFO

Deposit: £1,788.46

Holding Deposit: £357.69

Council Tax Band: D



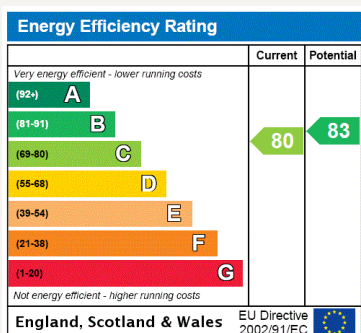
Approximate total area⁽¹⁾
581.03 ft²
53.98 m²

(1) Excluding balconies and terraces

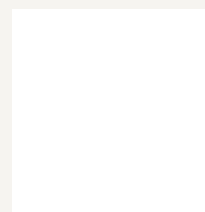
While every attempt has been made to ensure accuracy, all measurements are approximate, not to scale. This floor plan is for illustrative purposes only.

Calculations are based on RICS IPMS 3C standard.

GIRAFFE360



For more information, scan the QR code or visit the link below



<https://www.winkworth.co.uk/rent/property/REA190529>

Where no figures are shown, we have been unable to ascertain the information. All figures that are shown were correct at the time of printing.

Reading

0118 4022 300 | reading@winkworth.co.uk

Winkworth

for every step...

Winkworth wishes to inform prospective buyers and tenants that these particulars are a guide and act as information only. All our details are given in good faith and believed to be correct at the time of printing but they don't form part of an offer or contract. No Winkworth employee has authority to make or give any representation or warranty in relation to this property. All fixtures and fittings, whether fitted or not are deemed removable by the vendor unless stated otherwise and room sizes are measured between internal wall surfaces, including furnishings.