



New Bright Street, Reading, Berkshire, RG1 6QQ

£1,250 per month *Unfurnished*

2  1  2 

Two bedroom split level town centre apartment. Available now.

Two bedroom split level apartment located in the popular Holybrook development in the heart of Reading Town Centre, next to the Oracle. Accommodation comprises reception room, separate kitchen, three piece bathroom and one bedroom on one floor and a second bedroom with en suite shower room on the top floor. The property benefits from parking for two cars. Available now. Unfurnished.

KEY FEATURES

- Two bedroom apartment
- Town centre location
- Parking for two cars
- x1 allocated parking space plus visitor permit
- Council tax band C
- Available now
- Unfurnished

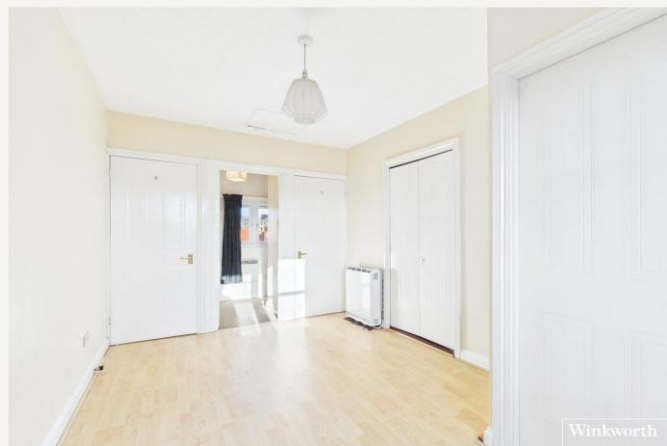


Reading

0118 4022 300 | reading@winkworth.co.uk

Winkworth

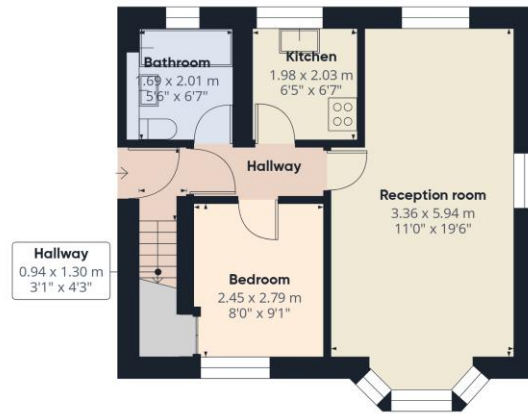
for every step...



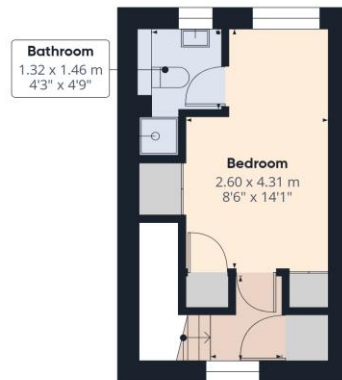


MATERIAL INFO

Deposit: £1,442.31
Holding Deposit: £288.46
Council Tax Band: C
EPC rating: D



Ground Floor



Floor 1



Approximate total area⁽¹⁾
57.3 m²
617 ft²

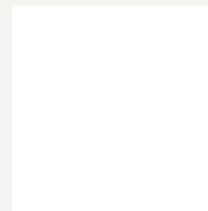
(1) Excluding balconies and terraces

Calculations reference the RICS IPMS 3C standard. Measurements are approximate and not to scale. This floor plan is intended for illustration only.

GIRAFFE360

Score	Energy rating	Current	Potential
92+	A		
81-91	B		
69-80	C		
55-68	D	67 D	73 C
39-54	E		
21-38	F		
1-20	G		

For more information, scan the QR code or visit the link below



<https://www.winkworth.co.uk/rent/property/REA251001>

Where no figures are shown, we have been unable to ascertain the information. All figures that are shown were correct at the time of printing.

Reading

0118 4022 300 | reading@winkworth.co.uk

Winkworth

for every step...

Winkworth wishes to inform prospective buyers and tenants that these particulars are a guide and act as information only. All our details are given in good faith and believed to be correct at the time of printing but they don't form part of an offer or contract. No Winkworth employee has authority to make or give any representation or warranty in relation to this property. All fixtures and fittings, whether fitted or not are deemed removable by the vendor unless stated otherwise and room sizes are measured between internal wall surfaces, including furnishings.