



LOCK CHASE, BLACKHEATH, LONDON, SE3 9HB
£745,000 SHARE OF FREEHOLD

LOCATED IN THIS HIGHLY SOUGHT AFTER ROAD VERY CLOSE TO BLACKHEATH VILLAGE AND STATION, IS THIS SPACIOUS THREE BEDROOM FIRST FLOOR (TOP) APARTMENT WITH A PRIVATE ENTRANCE, GARAGE EN-BLOC AND SOLD WITH A SHARE IN THE FREEHOLD.

Blackheath | 0208 8520999 | blackheath@winkworth.co.uk

Winkworth

winkworth.co.uk

See things differently



DESCRIPTION:

With a private entrance on the ground floor and stairs up, the accommodation comprises: large 16'3 x 13'9 lounge with bay window, fireplace, and alcove storage, a very large 14'2 x 12'10 kitchen diner with a very attractive modern kitchen, integrated appliances and large pantry cupboard. There is a large 13'1 x 10'11 master bedroom, a second double bedroom with built in wardrobes and a third smaller room that would still take a double bed. There is a modern shower room, separate additional WC, utility cupboard and loft storage. The property is in excellent decorative order. The property further benefits from a garage en-bloc, large south facing communal gardens and is sold with a share in the freehold.

This is a wonderful and very spacious home and early viewing is a must. Video tour can be seen at Winkworth.co.uk

Lock Chase is a quiet crescent tucked away just a few hundred metres from the centre of Blackheath Village. Its central location makes it a superb location for all the village has to offer, with its array of boutique shops, farmers market, restaurants, bars and station. The heath is just a few minutes walk and the fabulous Royal Greenwich Park is just 0.75 miles with Greenwich town centre beyond. Greenwich maintains a quaint rural village feel and is steeped in history from Roman remains and ancient burial grounds, to the old Royal Naval hospital, the Royal Observatory, the National Maritime Museum, and the spectacularly restored Cutty Sark - the last of the great tea clippers. Greenwich's covered market is one of London's best and attracts people from all over the capital. Surrounding the market, you'll find characterful boutiques and independent shops offering everything from toys and clothes to organic fruit and veg, artisan breads and cheeses.

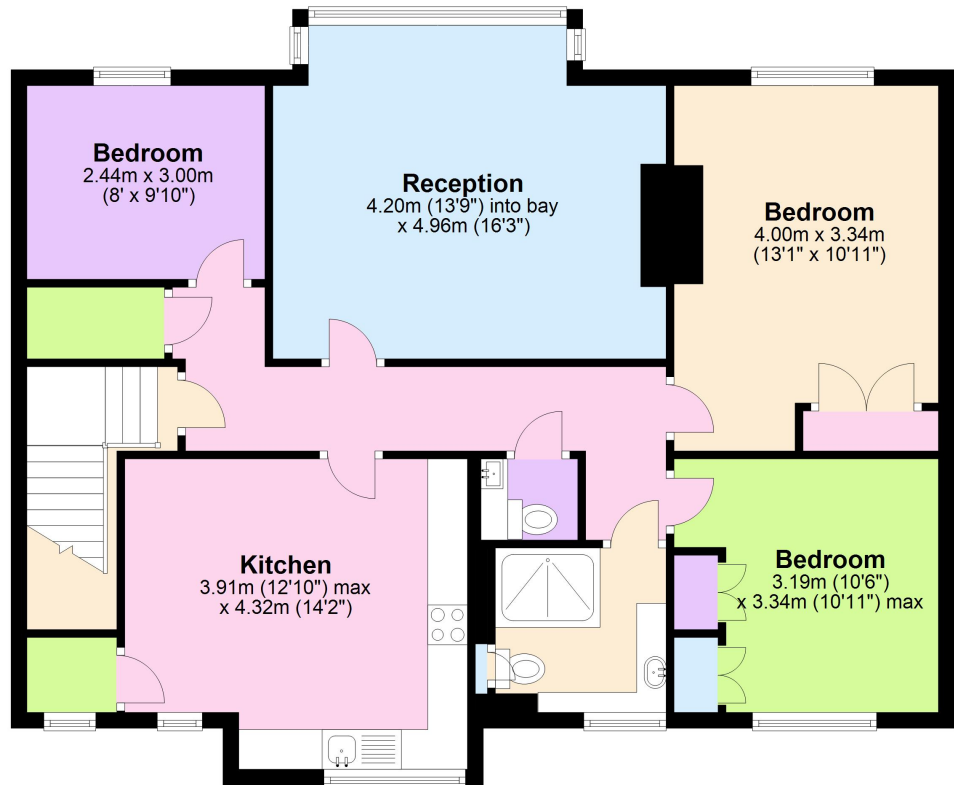
There are fantastic transport links with Blackheath Station giving access to London Bridge, Charing Cross and Victoria amongst others with access to the, DLR (0.75 miles Lewisham) bus, riverboat, foot tunnel and cable car all within the area. The area is minutes from Canary Wharf, the City and central London; Just one of the reasons why it's increasingly popular with young professionals and commuters. The O2 is also near by. Close by are several highly sought-after Independent Schools including; Blackheath Preparatory School, The Pointer School, Heath House Preparatory School, Blackheath High Junior School, Blackheath High Seniors School, Colfes (1.3 miles) and Eltham College (2.4 miles) as are the Ofsted "outstanding" John Ball and St Margarets primary schools.





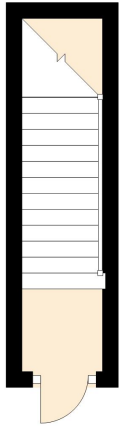
First Floor

Approx. 95.3 sq. metres (1025.4 sq. feet)



Ground Floor

Approx. 4.5 sq. metres (48.6 sq. feet)



Total area: approx. 99.8 sq. metres (1074.0 sq. feet)

This floorplan is for illustration purposes only and is not to scale. The position and size of doors, windows, appliances and other features are approximate. Any lease and service charge details have been provided by the vendor. Any interest party should have these checked by a solicitor as part of the purchase process.

Blackheath | 0208 8520999 | blackheath@winkworth.co.uk

Winkworth

winkworth.co.uk

See things differently

Winkworth wishes to inform prospective buyers and tenants that these particulars are a guide and act as information only. All our details are given in good faith and believed to be correct at the time of printing but they don't form part of an offer or contract. No Winkworth employee has authority to make or give any representation or warranty in relation to this property. All fixtures and fittings, whether fitted or not are deemed removable by the vendor unless stated otherwise and room sizes are measured between internal wall surfaces, including furnishings.