



VICTORIA ROAD, DARTMOUTH  
**£275,000** LEASEHOLD

**A beautifully presented two bedroom apartment  
 with garden and parking.**

Dartmouth | 01803 832288 | [dartmouth@winkworth.co.uk](mailto:dartmouth@winkworth.co.uk) 3a Market Street,  
 Dartmouth, TQ6 9QE

**Winkworth**

for every step...

[winkworth.co.uk](http://winkworth.co.uk)



**SUMMARY:** A beautifully presented two bedroom Ground Floor Apartment on the level with patio and parking.

**DIRECTIONS:** From Dartmouth's Market Square turn right into Victoria Road. 1 Buckland Court is approximately 100yards along on your left.

**DESCRIPTION:** No chain ahead! Due to a lifestyle change the Vendor has reluctantly made the decision to sell and a wonderful bolt hole opportunity in Dartmouth is now on offer.

Pride of ownership is reflected throughout; this apartment is beautifully presented! With its own well-proportioned parking space, the stress and worry of searching for that ever-elusive car park disappears.

- - 2 bedrooms
- - 5 mins walk to river and gardens
- - Pets allowed

**COUNCIL TAX BAND: C**

**EPC RATING: D**

**POSTCODE: TQ6 9RT.**

**SERVICES** - Mains water and drainage and electricity.

**N.B. No Holiday Letting Allowed.**

**LEASE: 997 years remaining.**

**Service Charge: £504.00 per annum.**  
**Each flat pays 1/3 of the costs.**

- - Carpark
- - Small patio

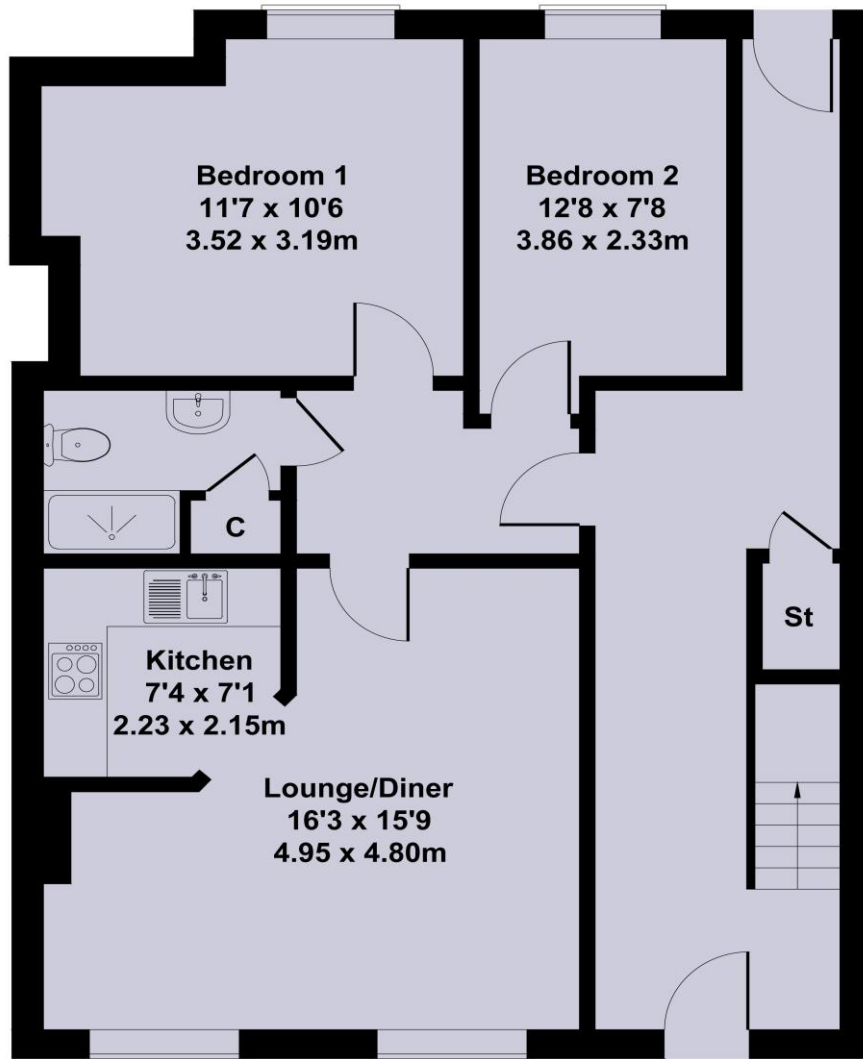






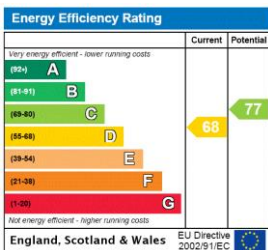
# 1 Buckland Court

Approximate Gross Internal Area  
807 sq ft - 75 sq m



Not to Scale. Produced by The Plan Portal 2022  
For Illustrative Purposes Only.

This floorplan is for illustration purposes only and is not to scale. The position and size of doors, windows, appliances and other features are approximate.



Dartmouth | 01803 832288 | [dartmouth@winkworth.co.uk](mailto:dartmouth@winkworth.co.uk)  
3a Market Street, Dartmouth, TQ6 9QE

## Winkworth

for every step...

[winkworth.co.uk](http://winkworth.co.uk)

Winkworth wishes to inform prospective buyers and tenants that these particulars are a guide and act as information only. All our details are given in good faith and believed to be correct at the time of printing but they don't form part of an offer or contract. No Winkworth employee has authority to make or give any representation or warranty in relation to this property. All fixtures and fittings, whether fitted or not are deemed removable by the vendor unless stated otherwise and room sizes are measured between internal wall surfaces, including furnishings.